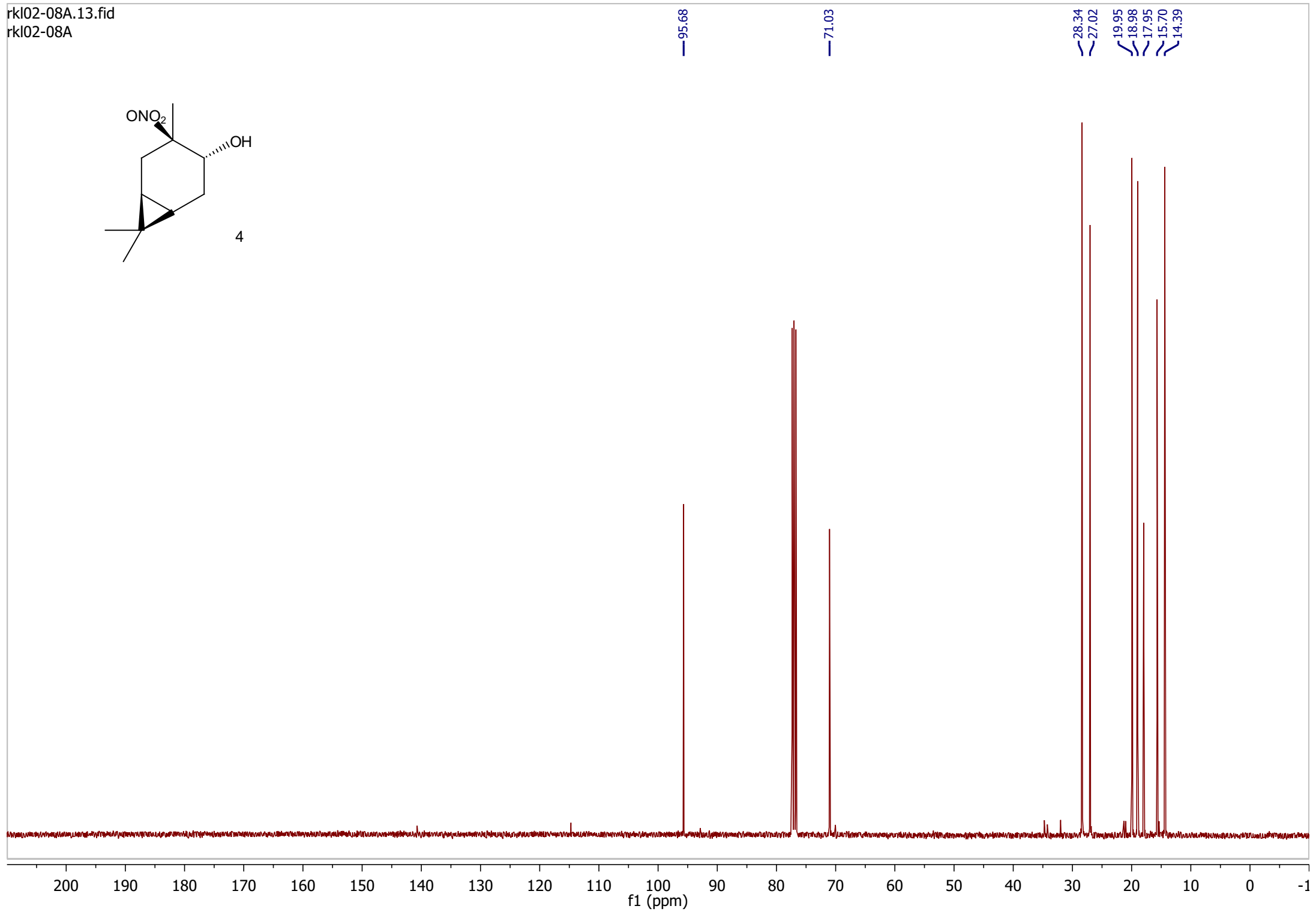
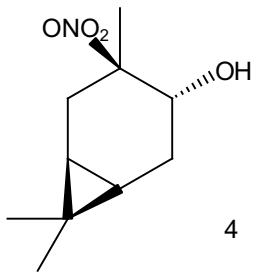
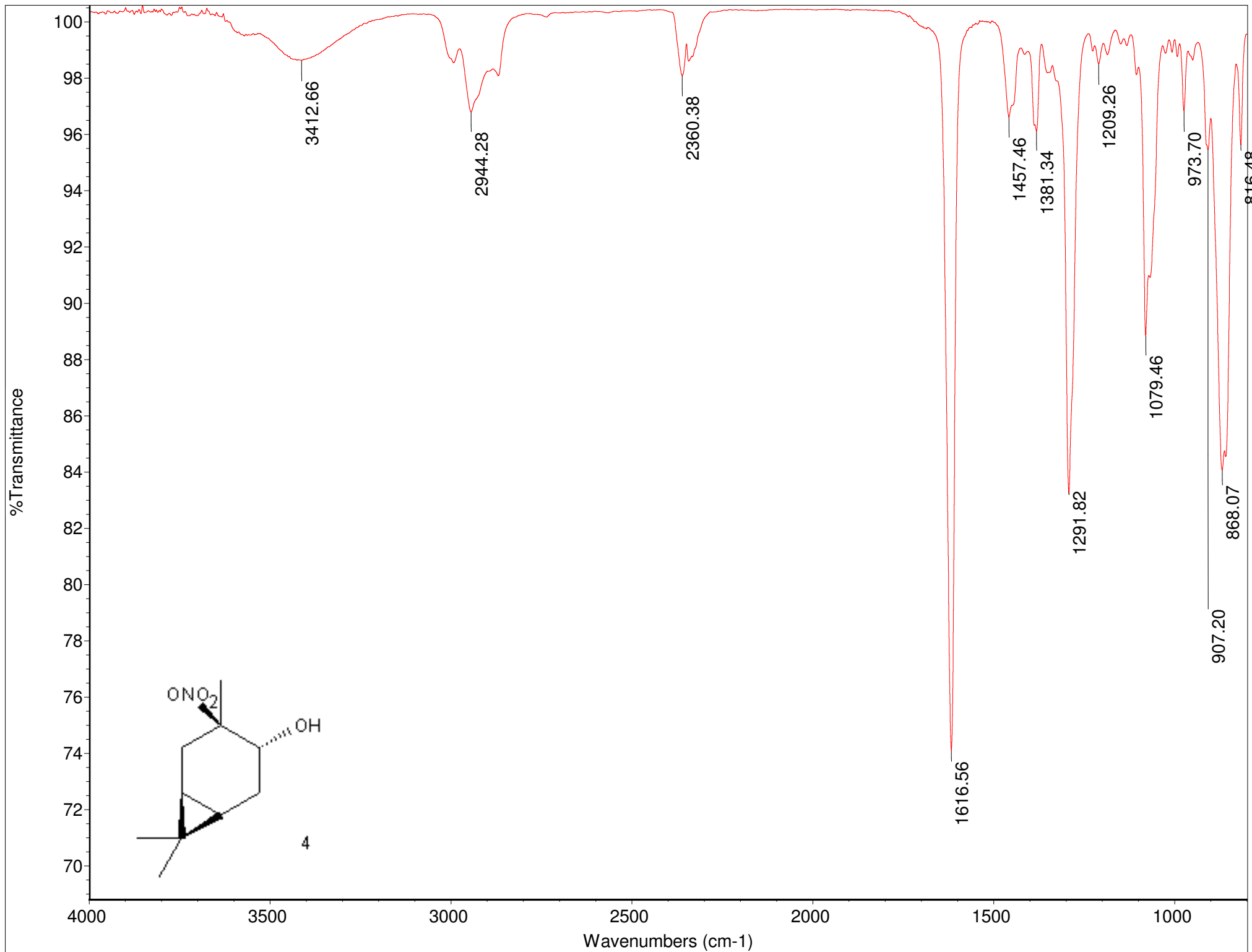
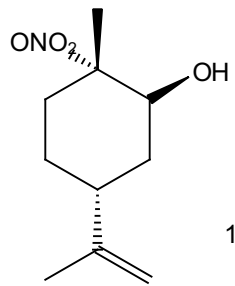


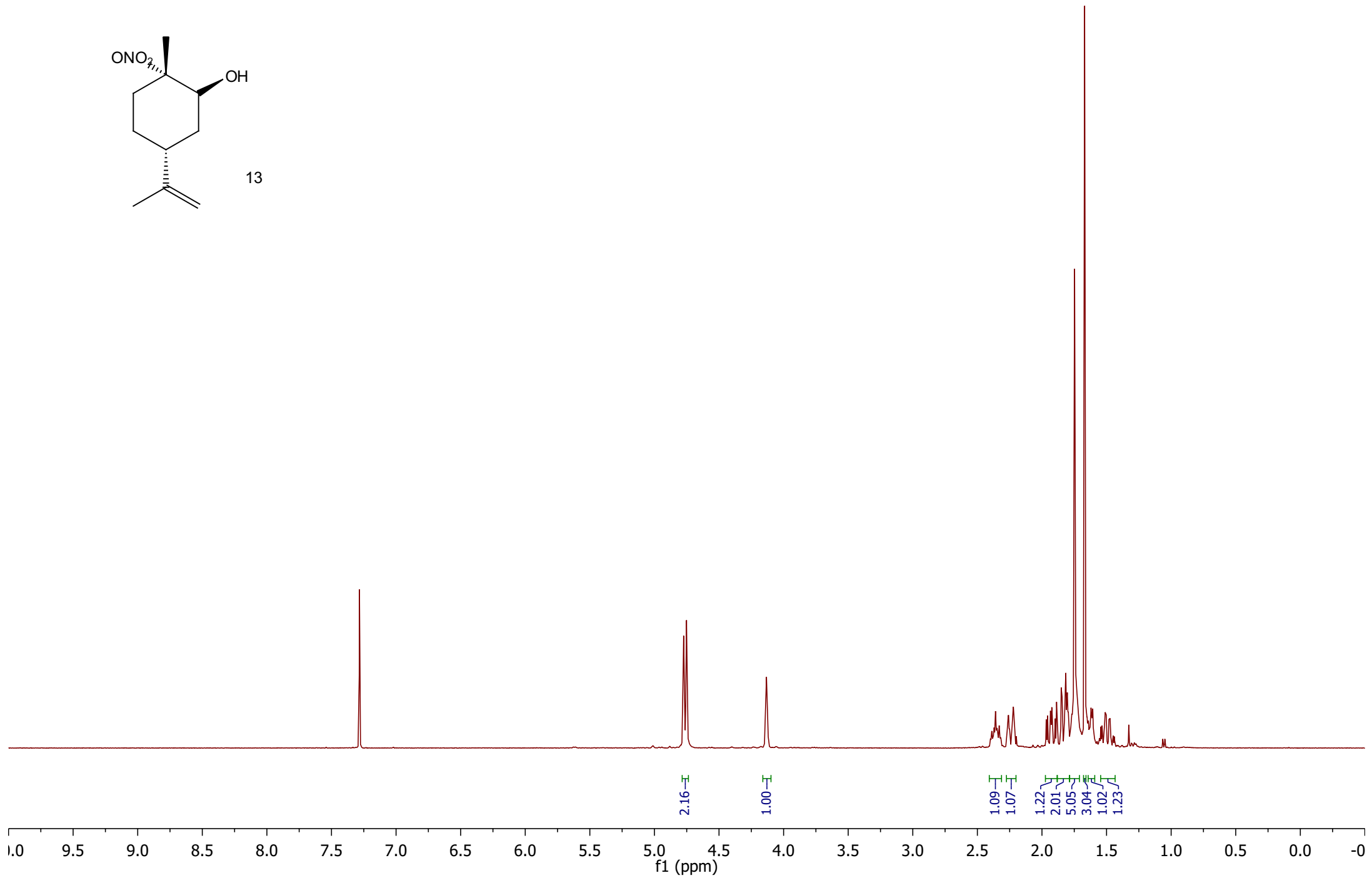
rkl02-08A.13.fid
rkl02-08A

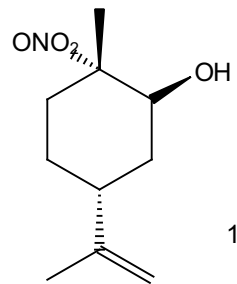




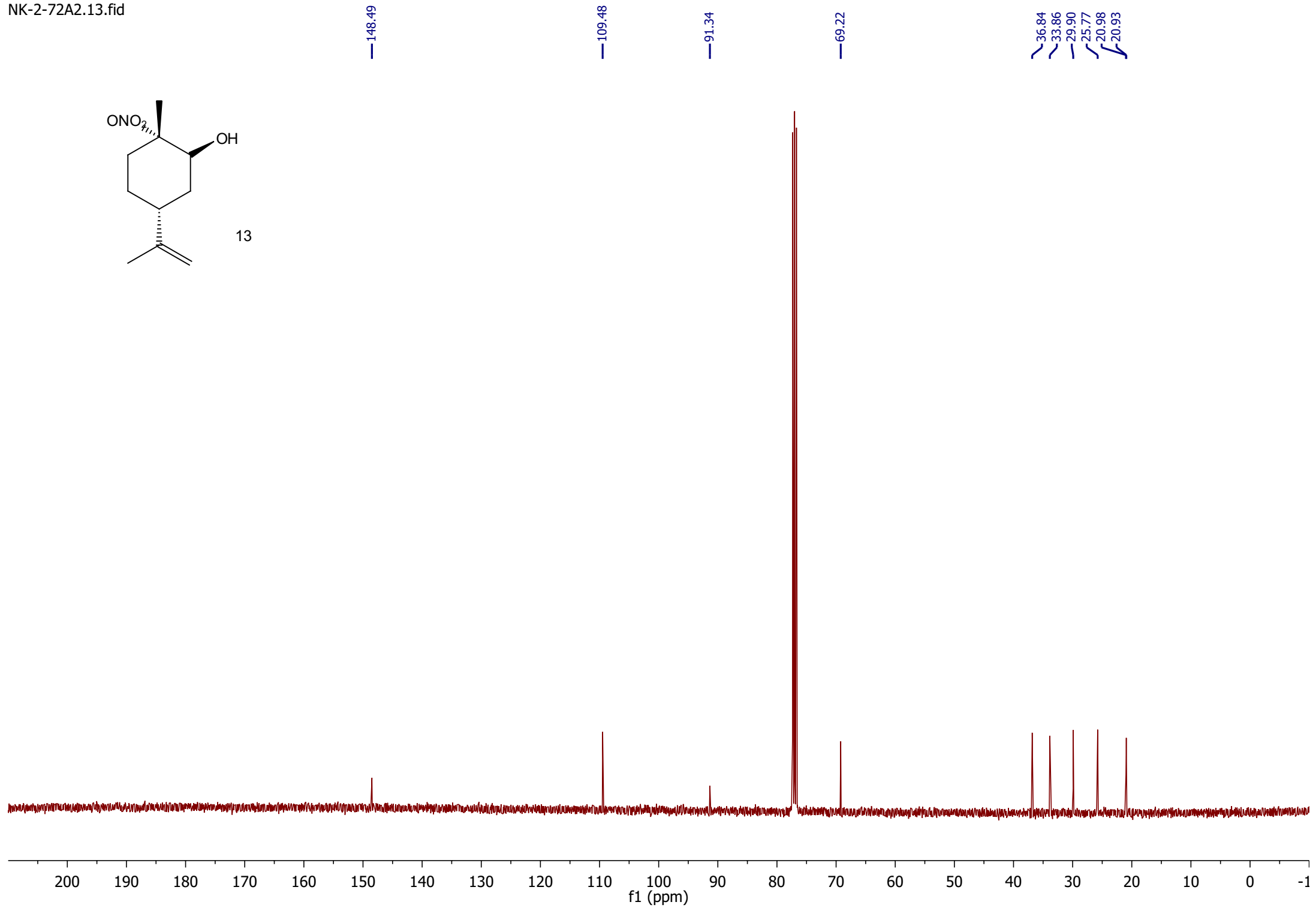


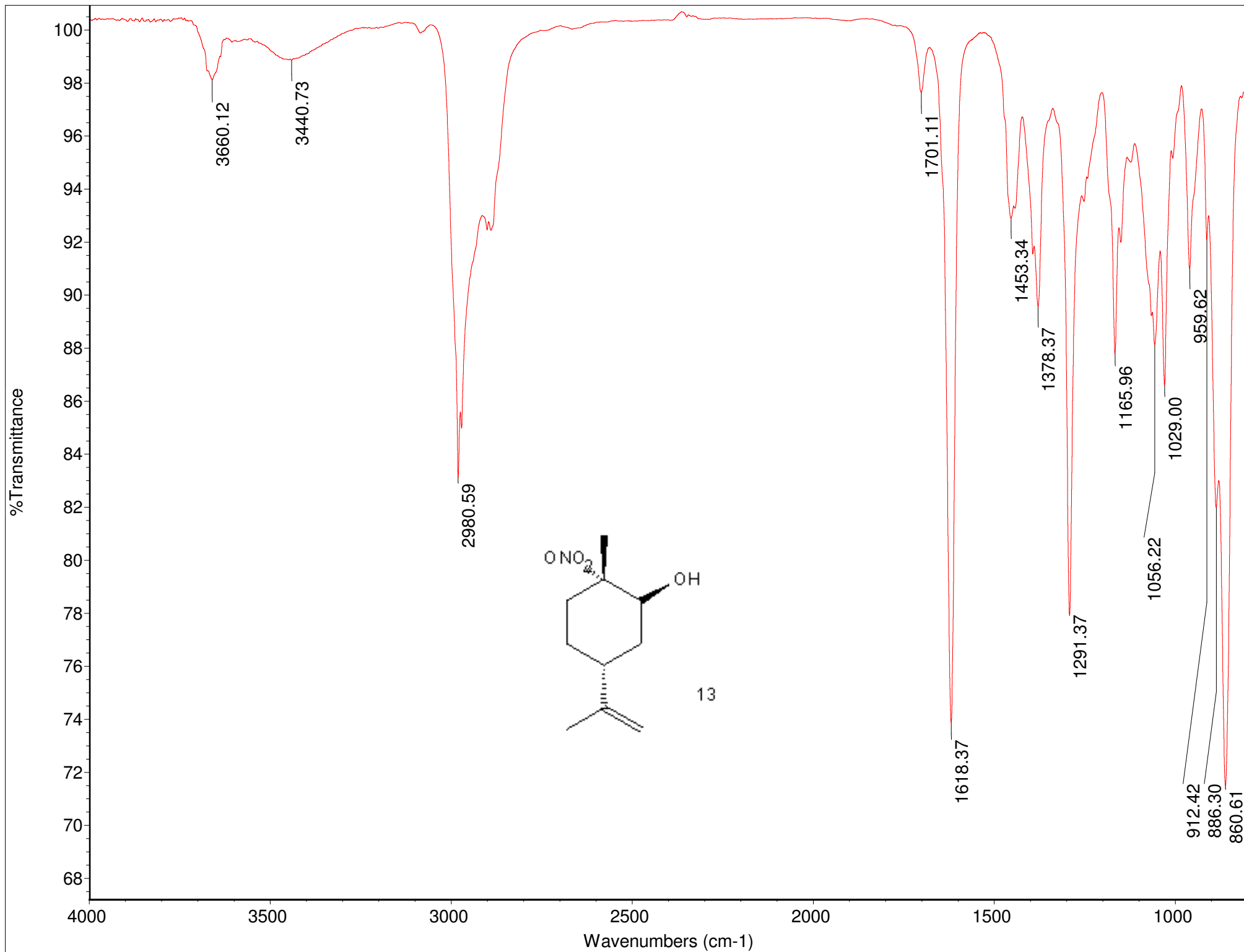
13

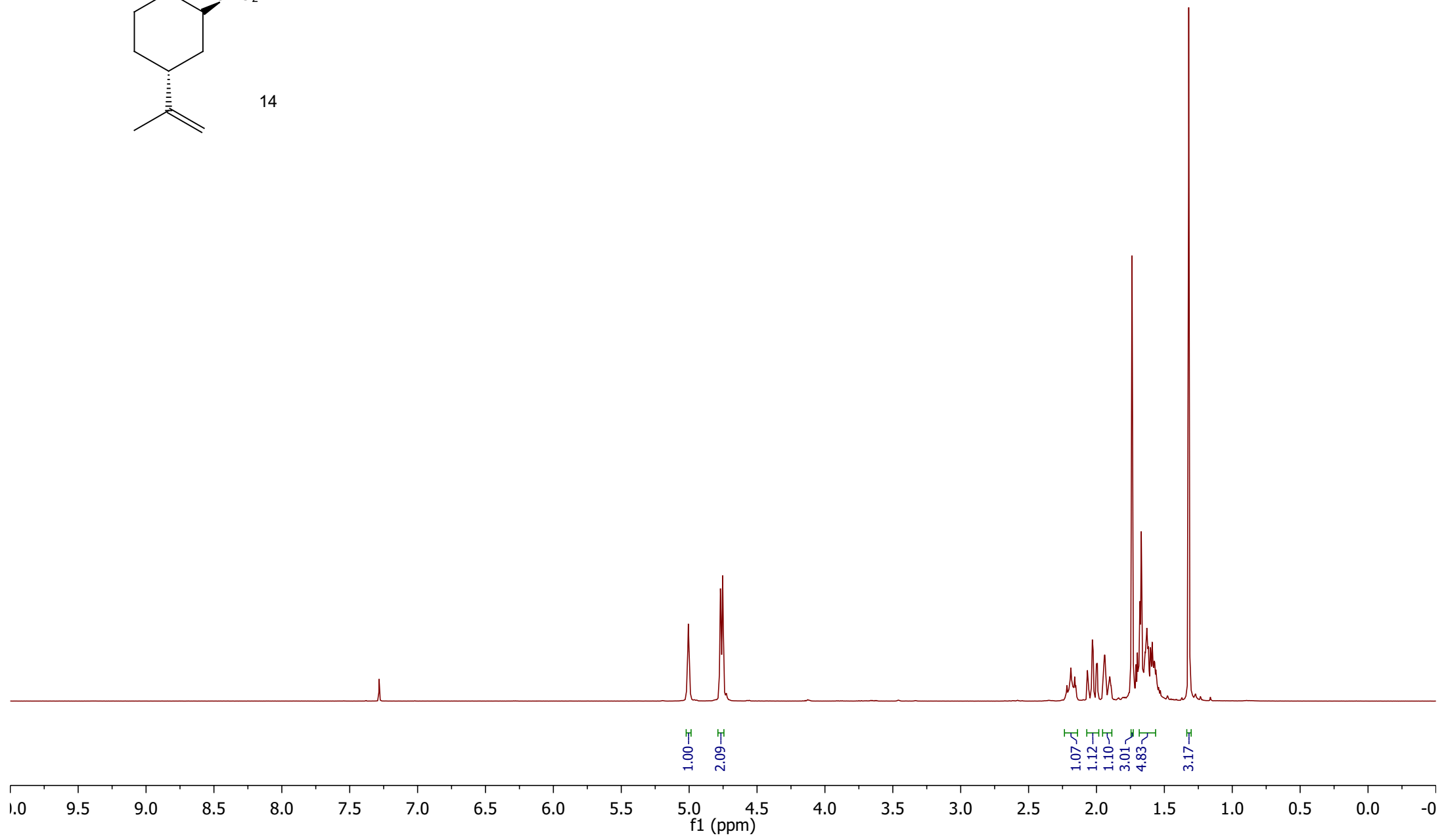
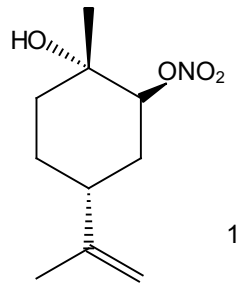




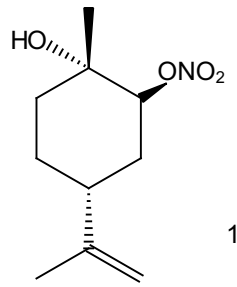
13



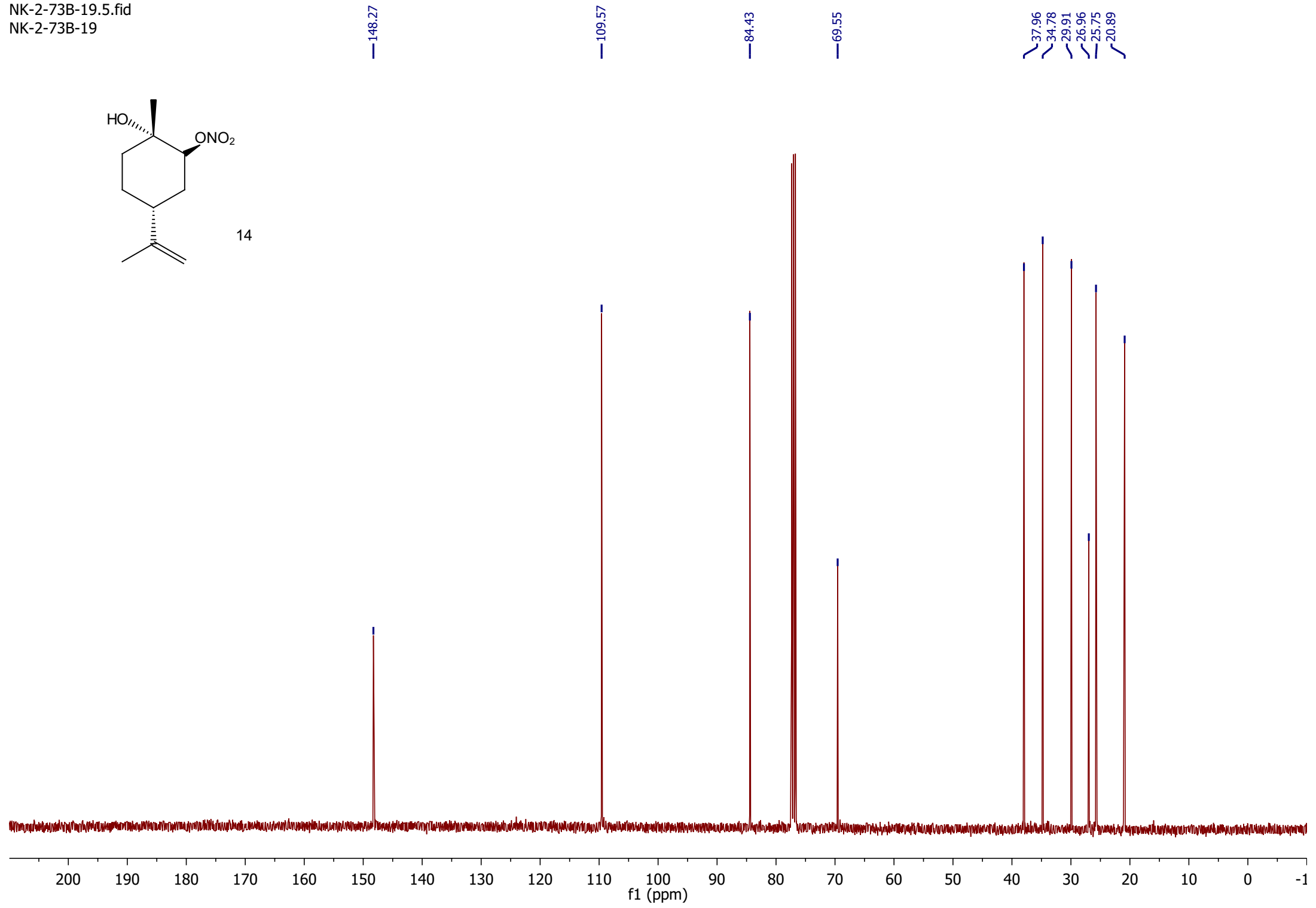


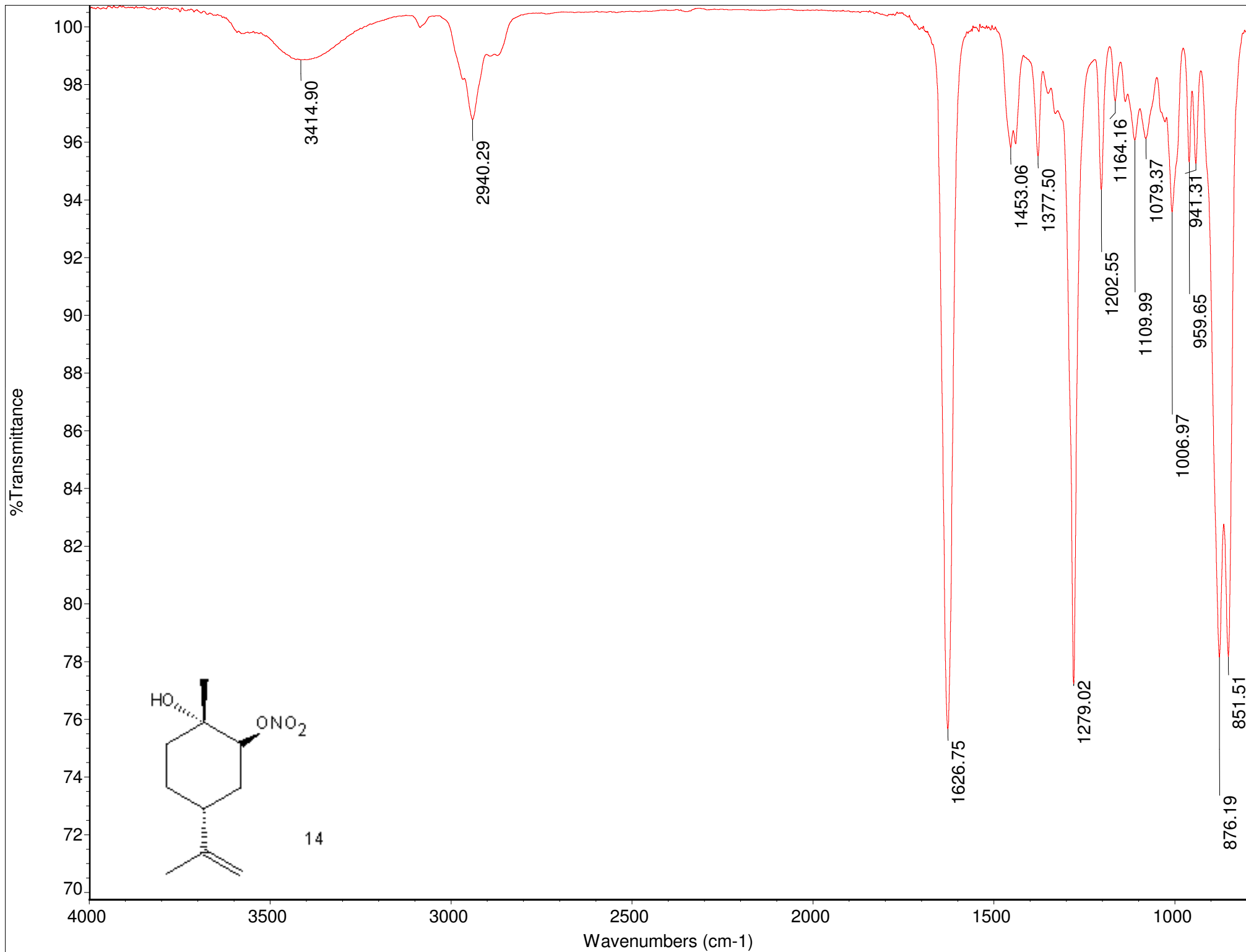


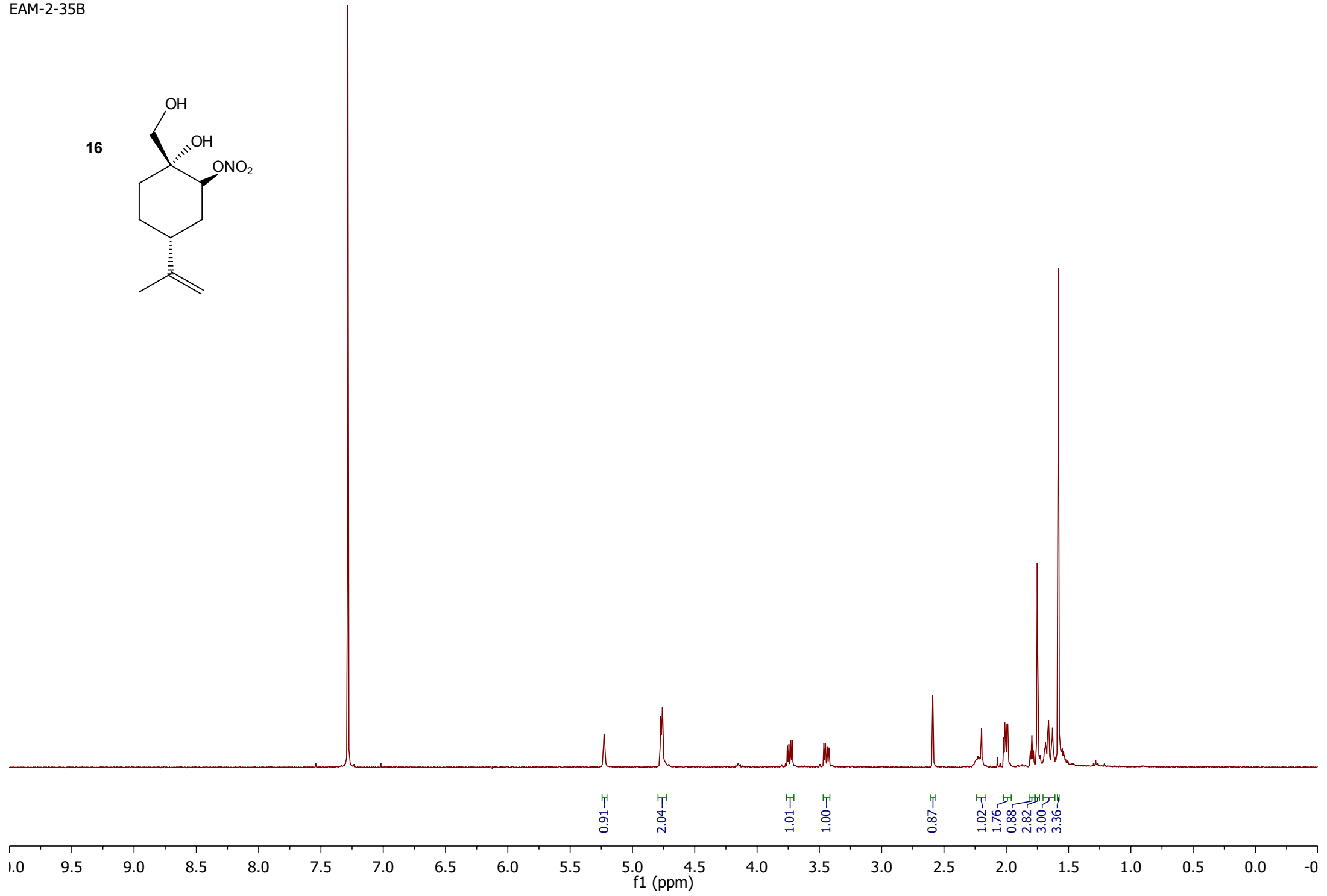
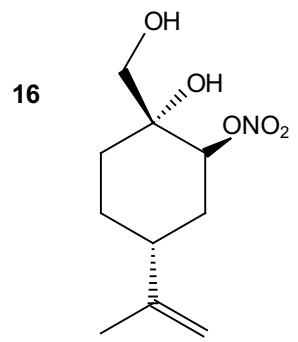
NK-2-73B-19.5.fid
NK-2-73B-19

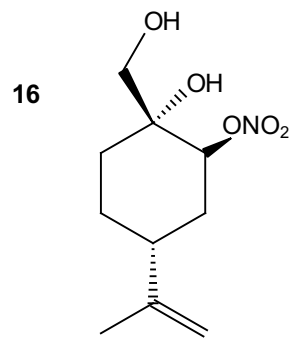


14









148.42

109.58

79.89

70.98

66.45

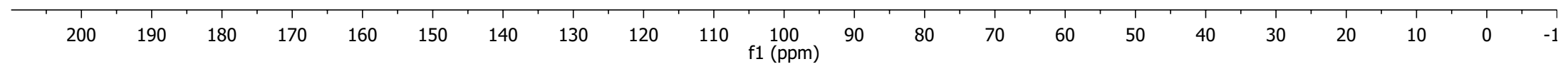
38.47

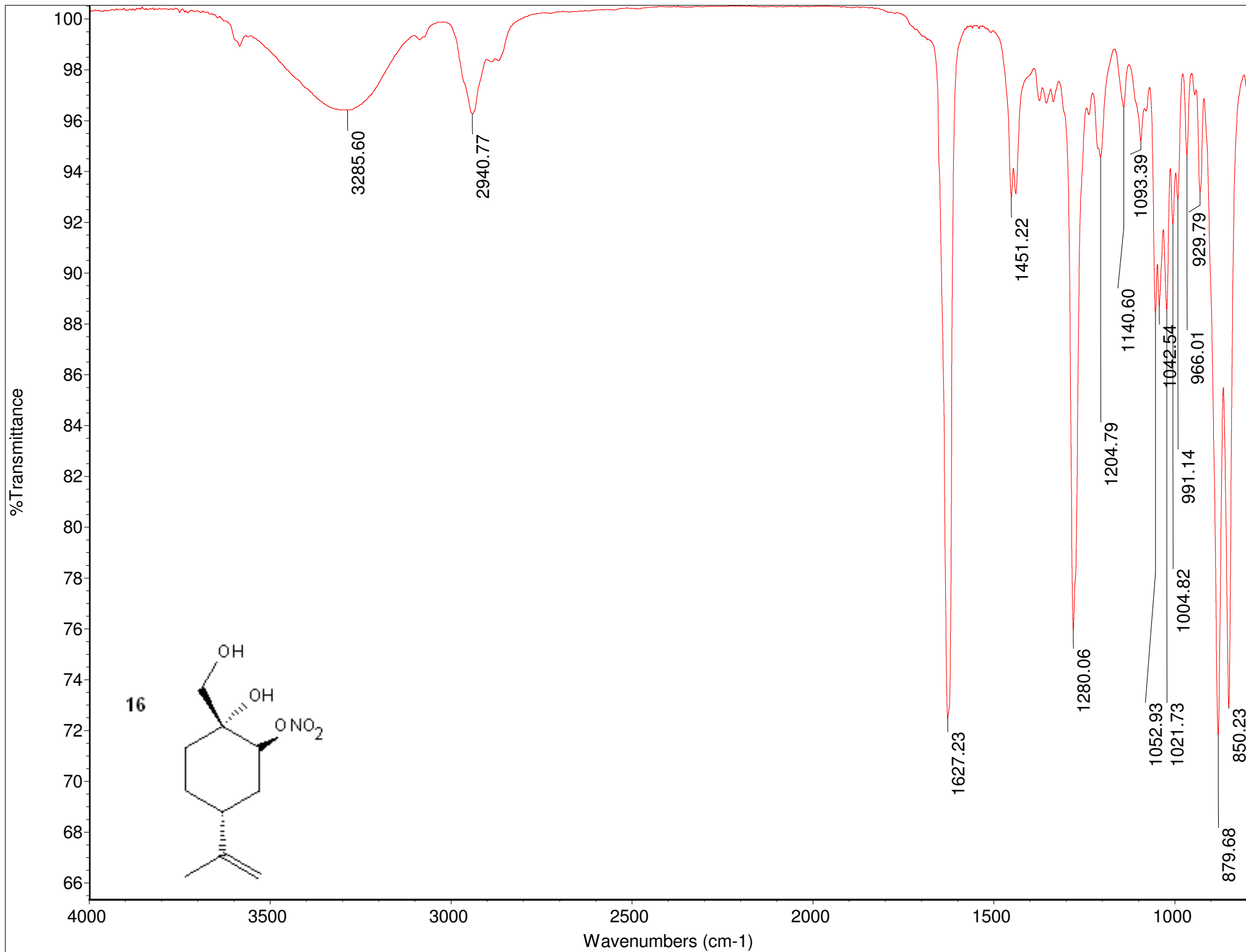
29.70

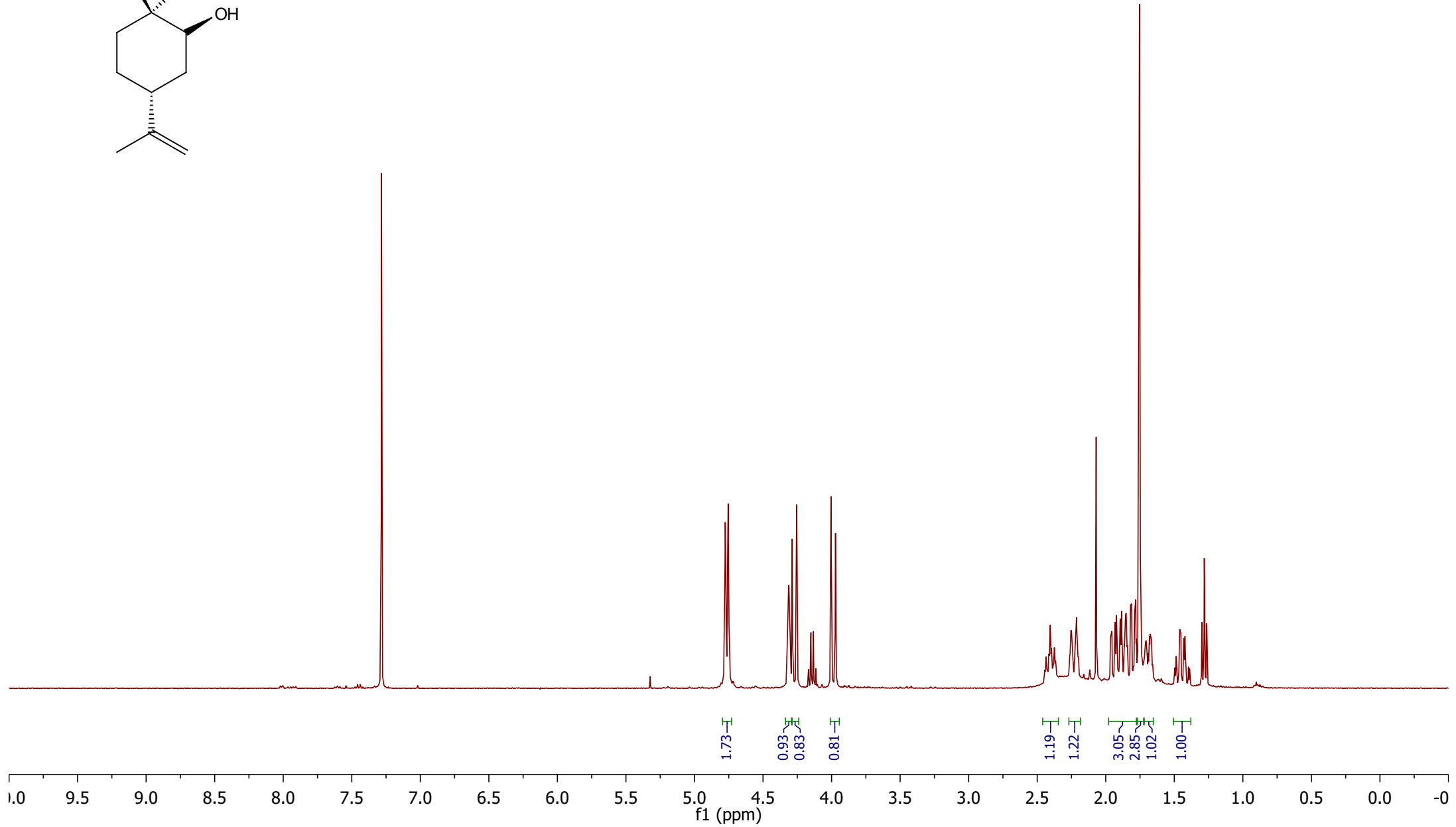
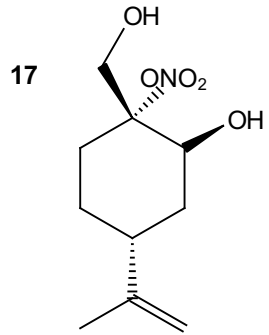
29.55

25.10

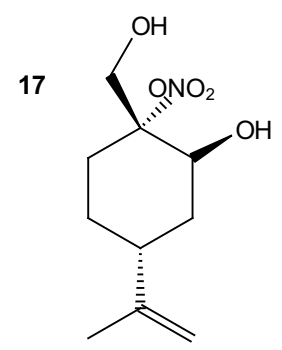
20.77







EAM-2-35E.5.fid
EAM-2-35C



— 148.58

— 109.43

— 92.51

— 65.67

— 62.91

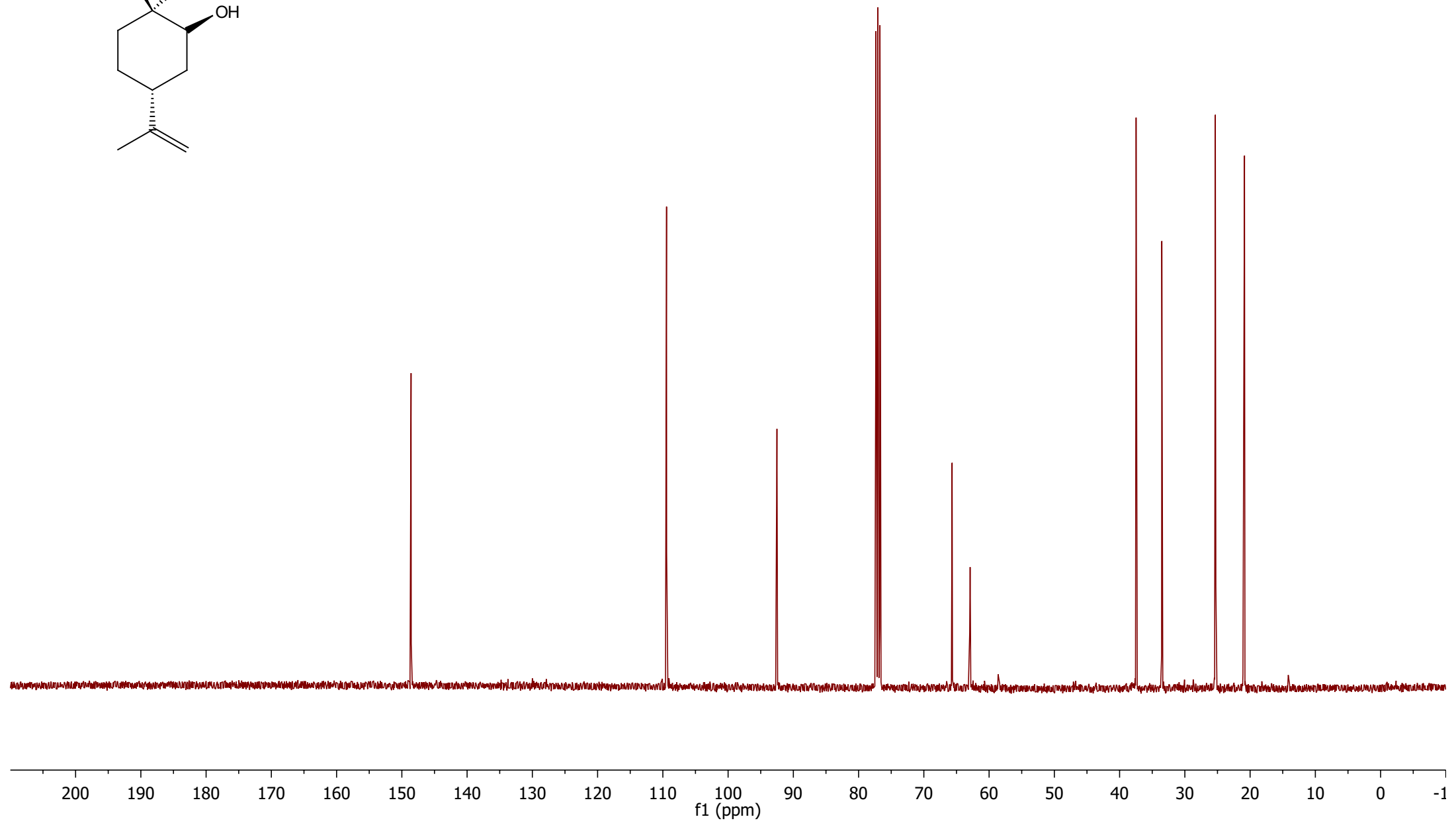
— 37.47

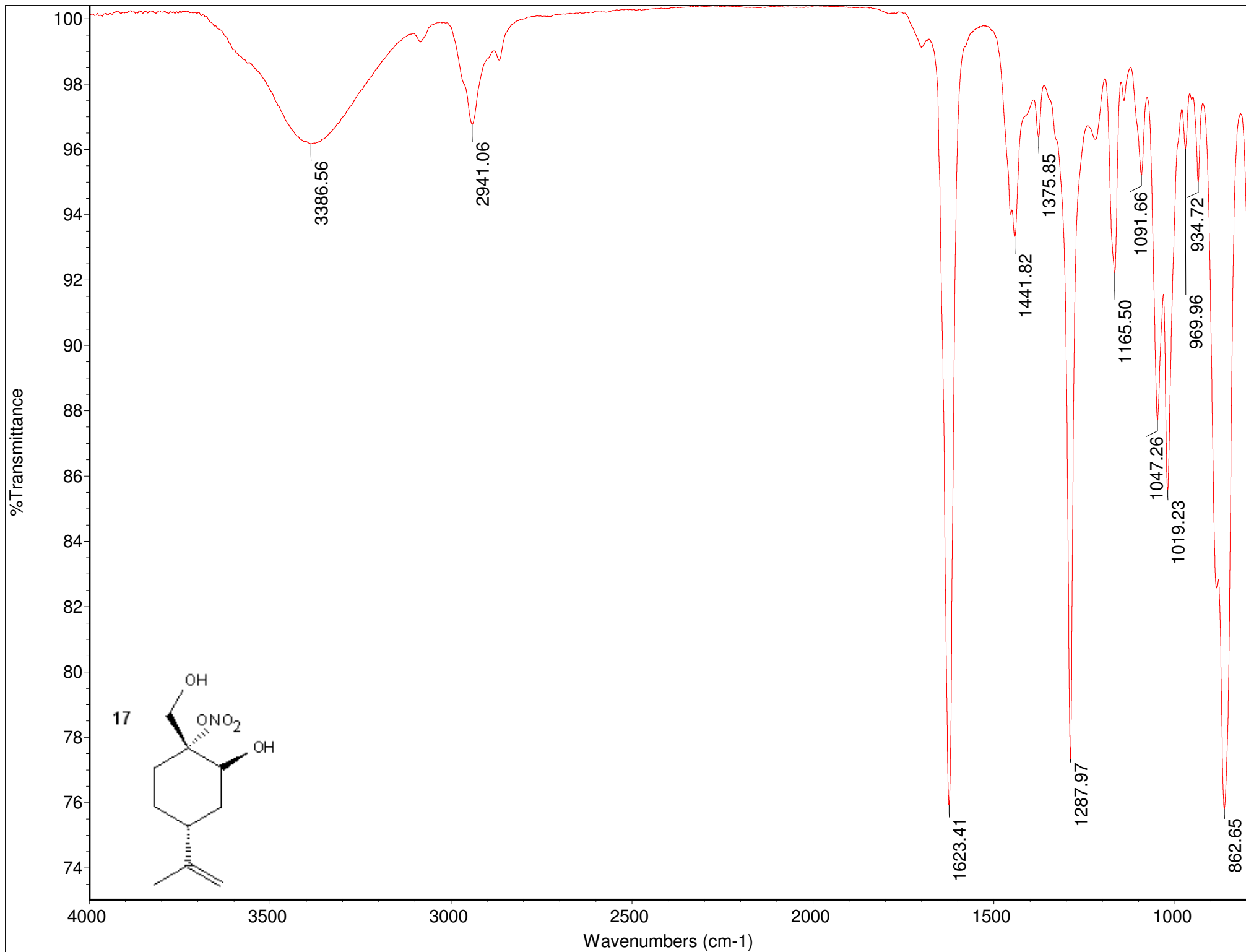
— 33.53

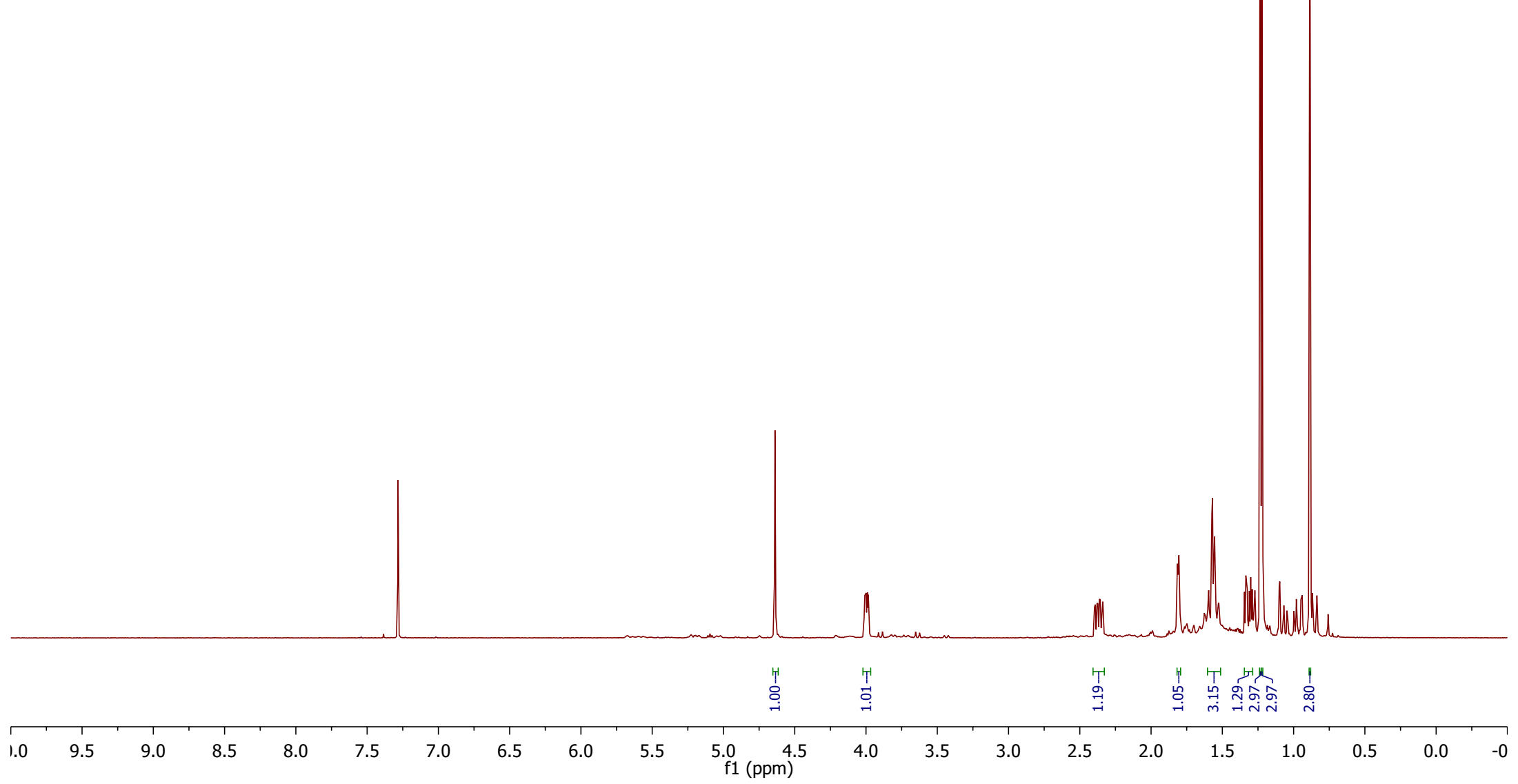
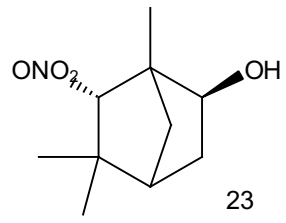
— 25.33

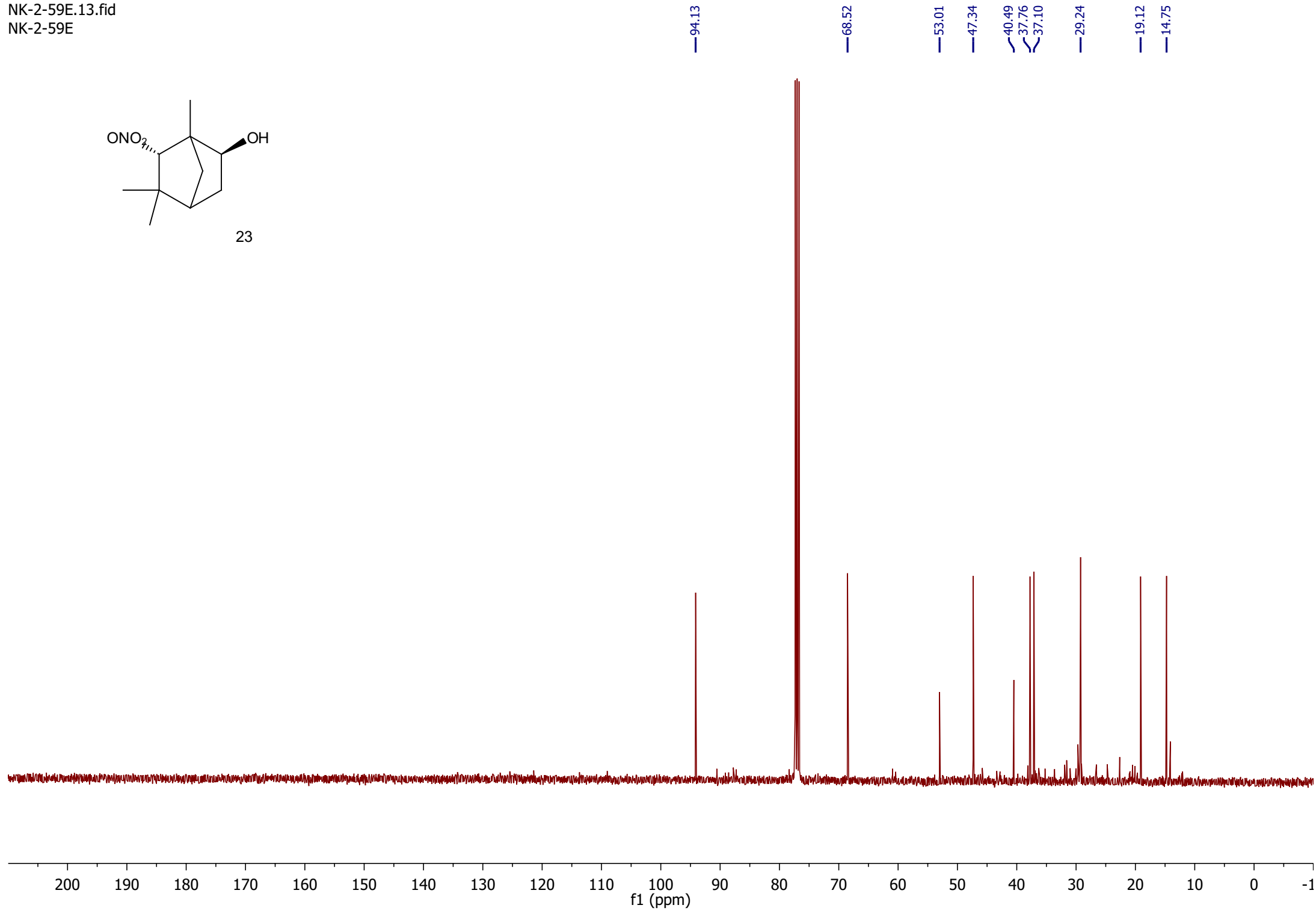
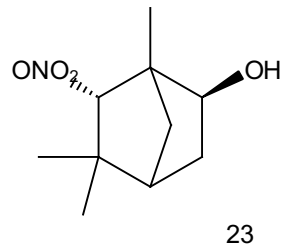
— 25.26

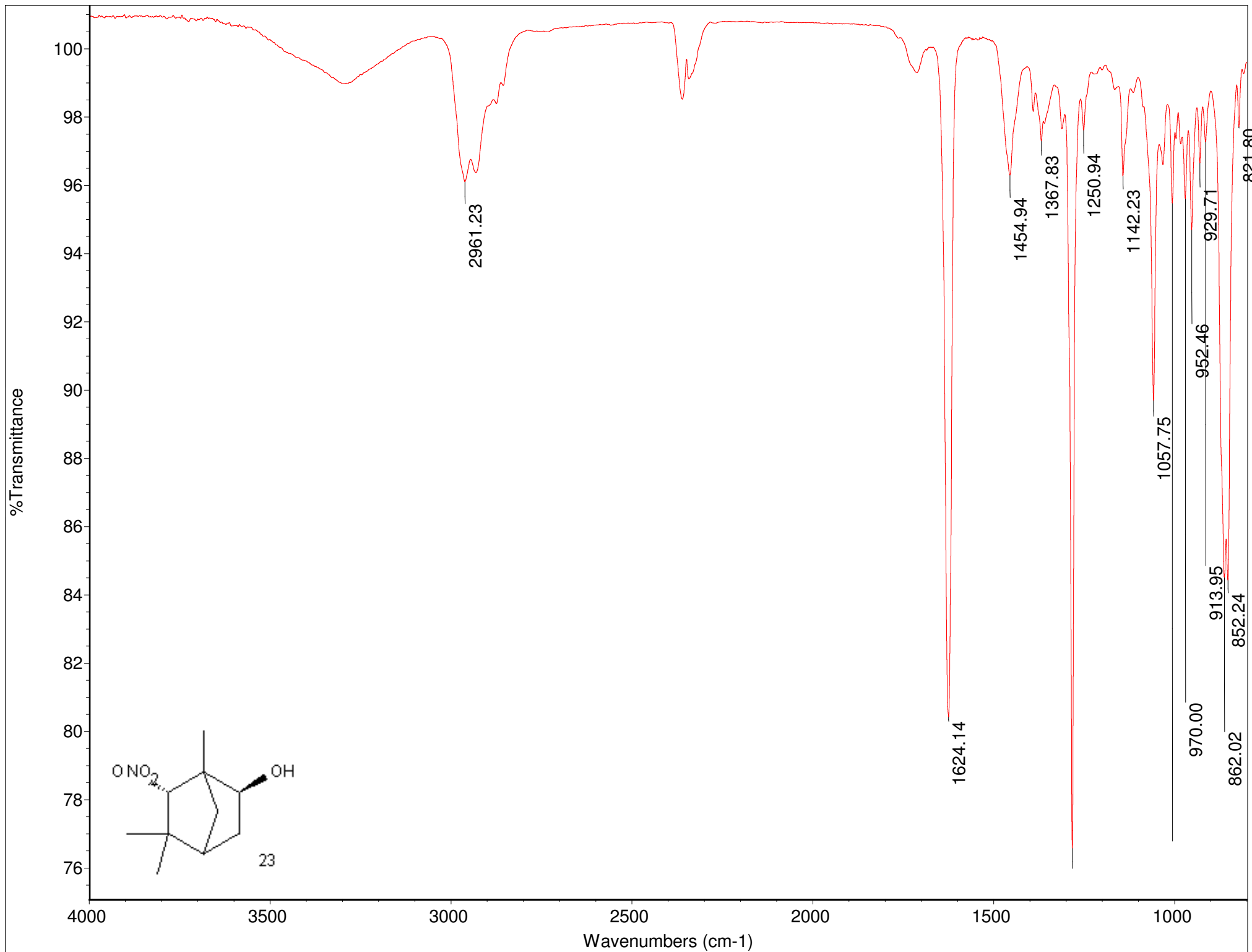
— 20.86

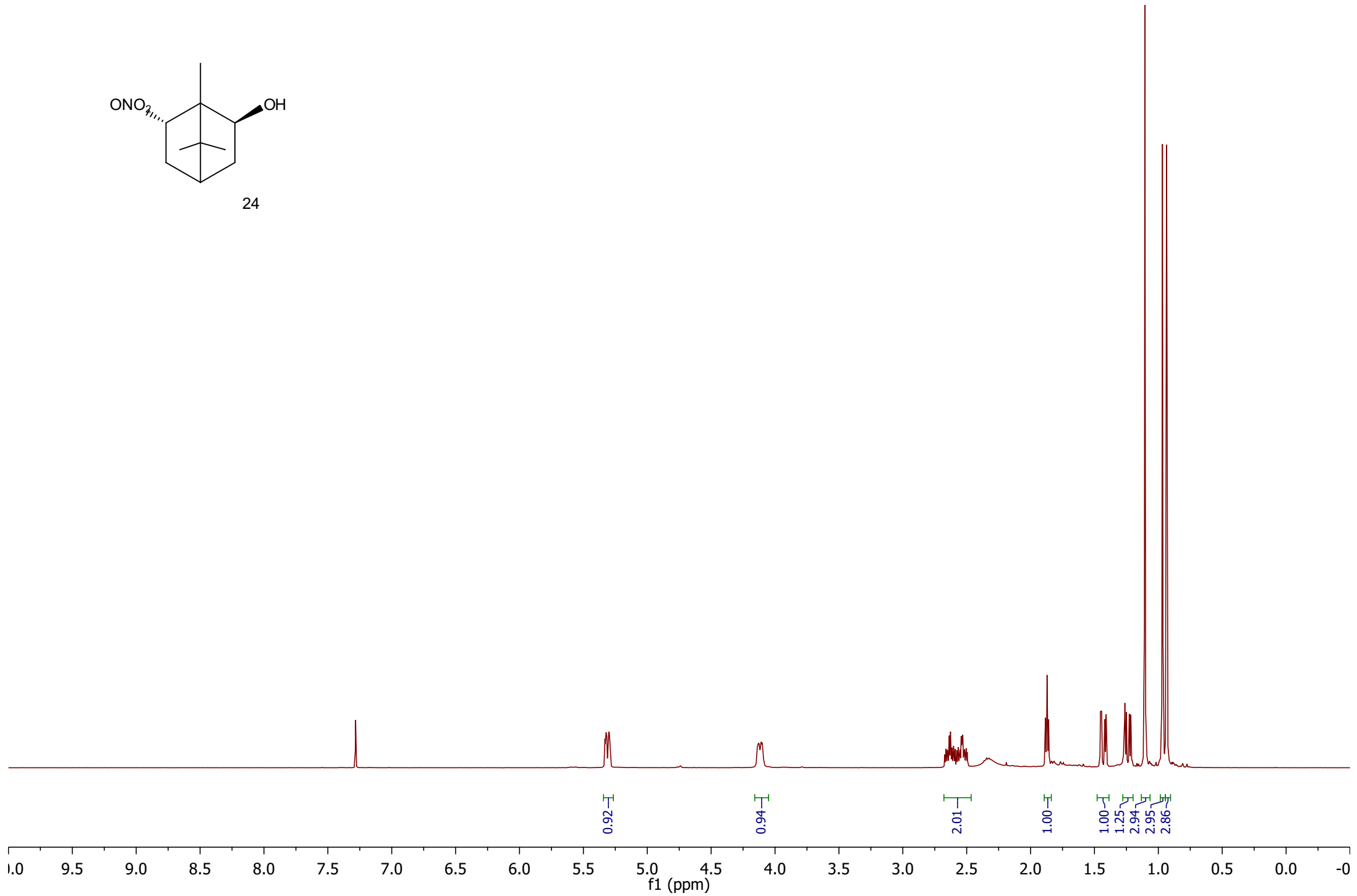
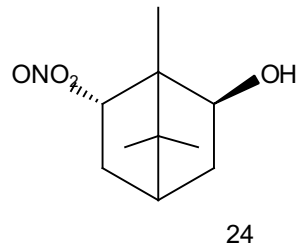


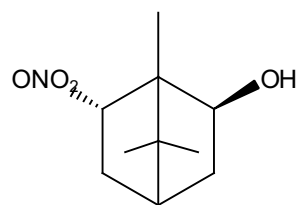




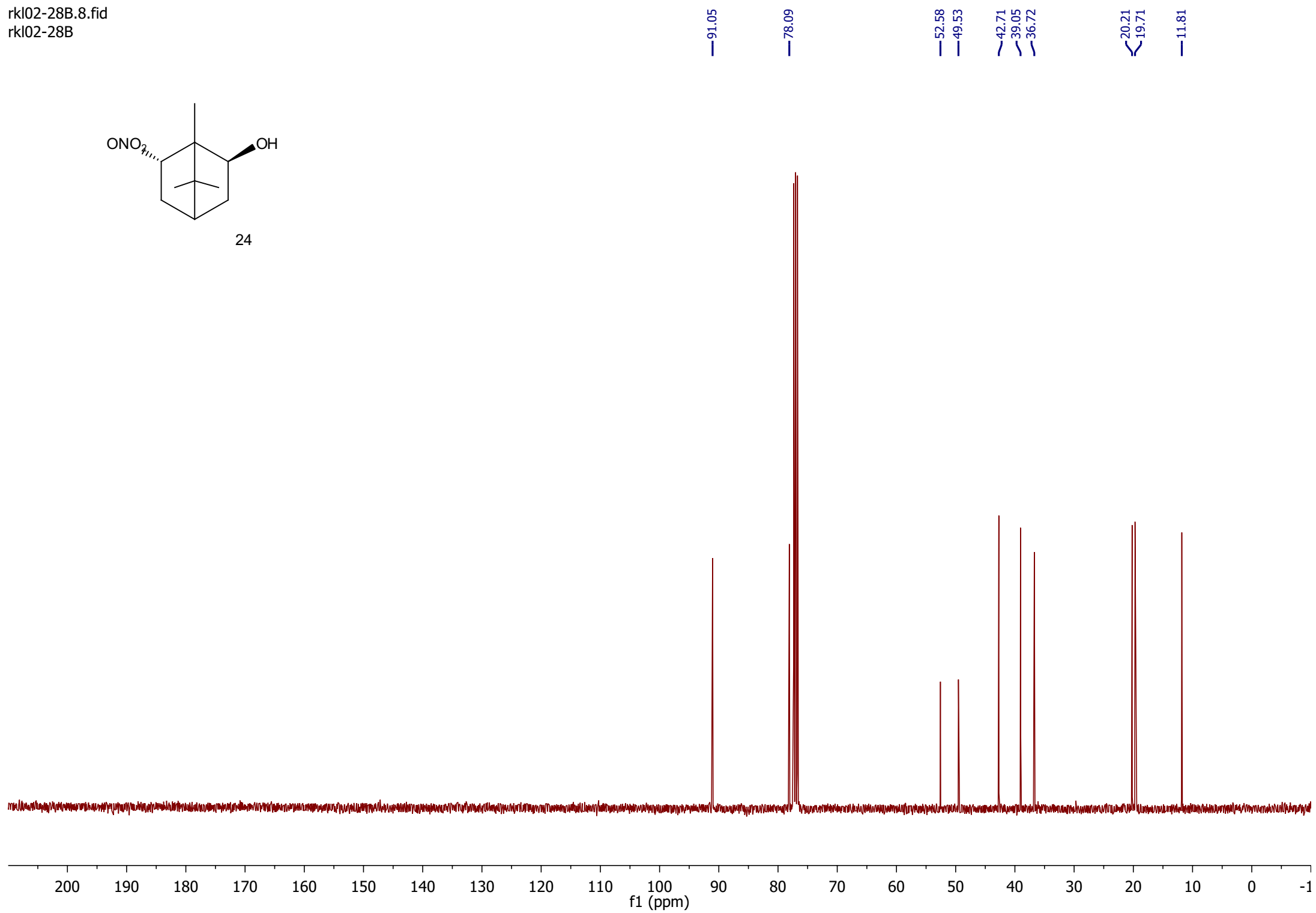


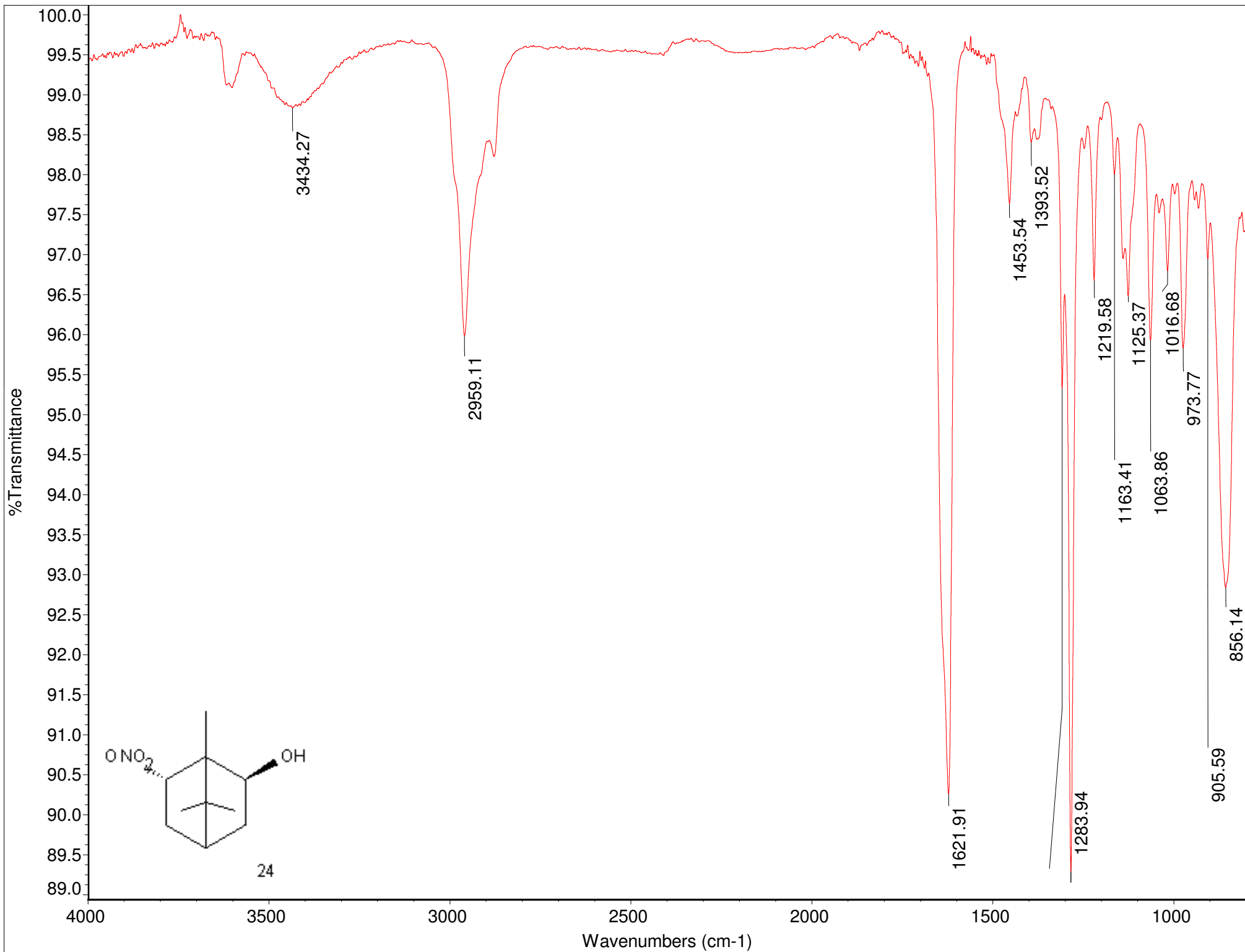


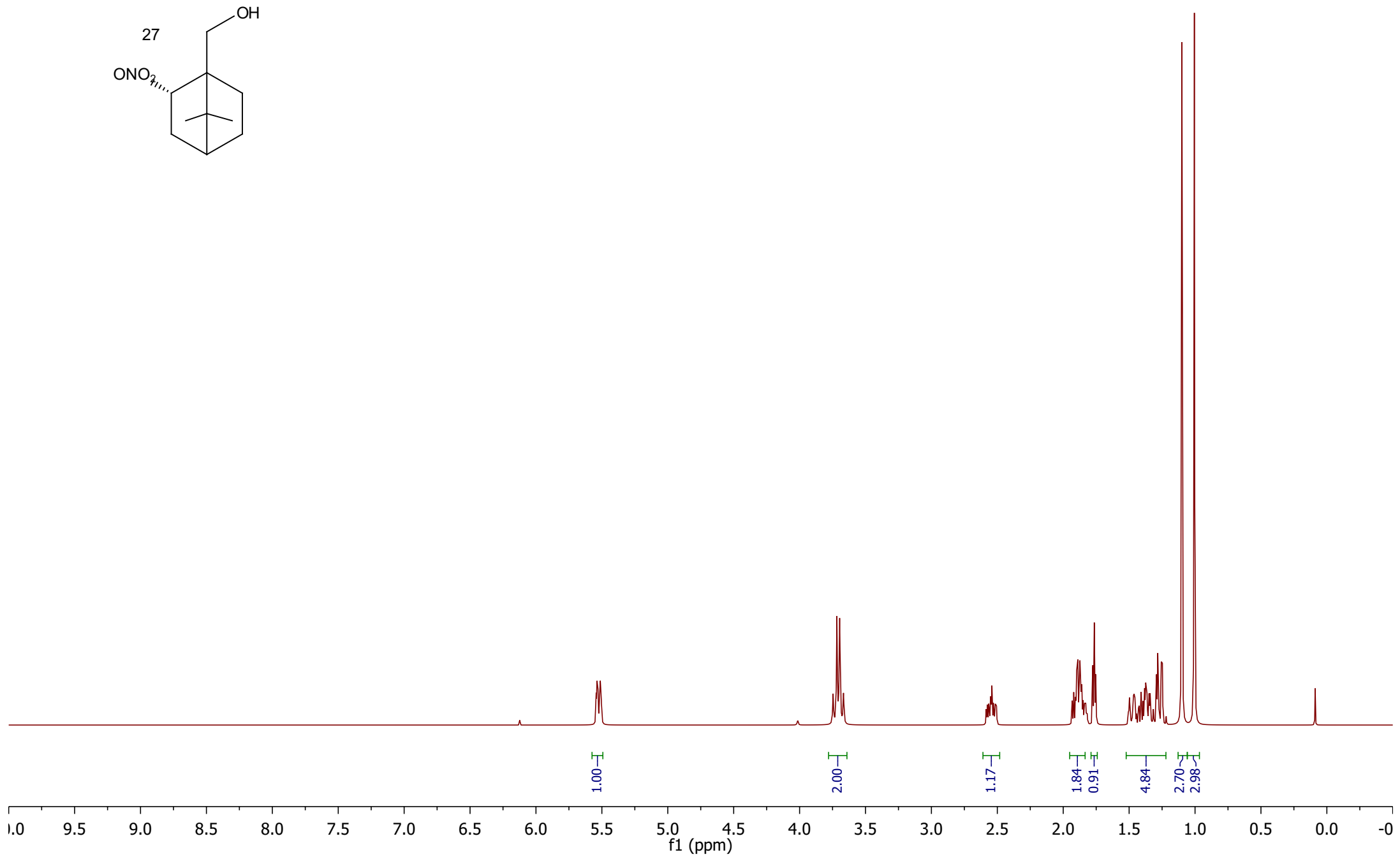
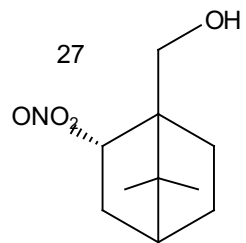


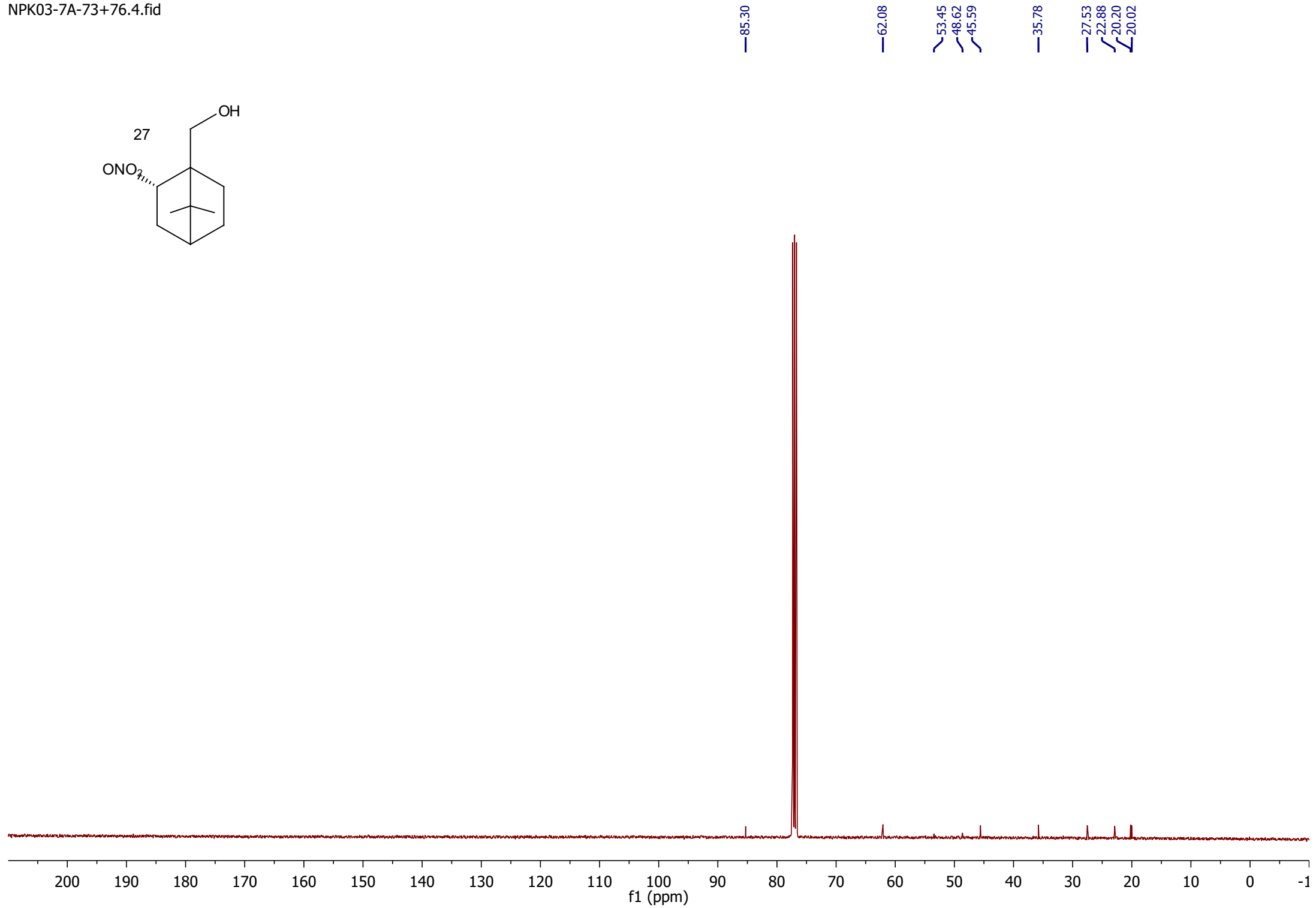
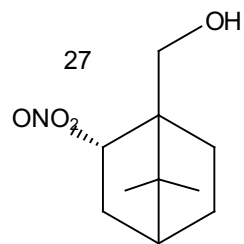


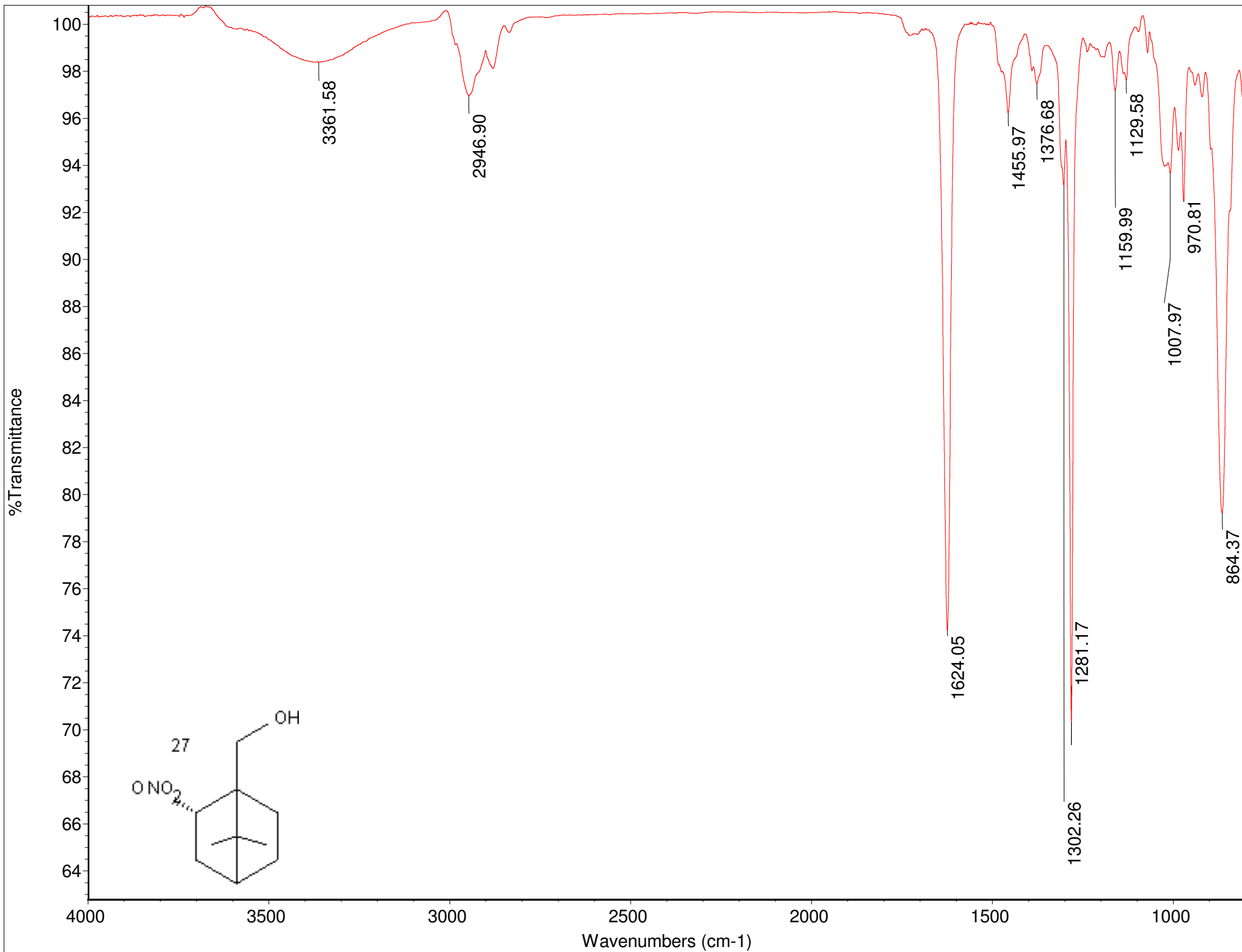
24

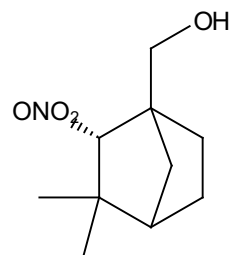




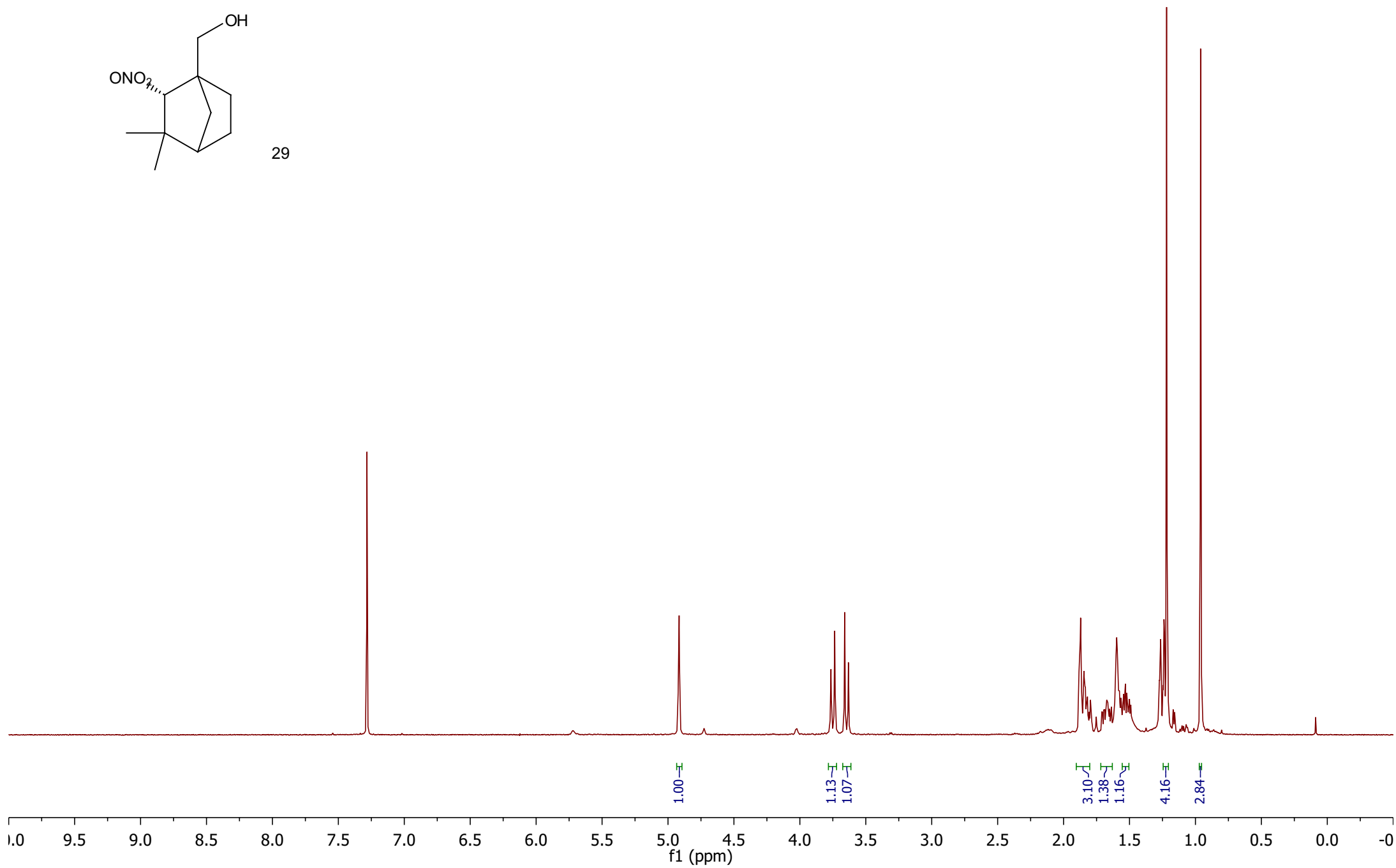


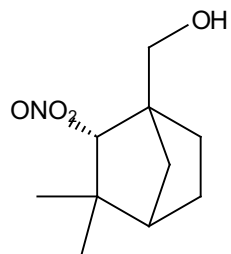






29





29

