

Supplementary information of

Emission characteristics of refractory black carbon aerosols from fresh biomass burning: a perspective from laboratory experiment

Xiaole PAN et al.,

Correspondence to: panxiaole@mail.iap.ac.cn

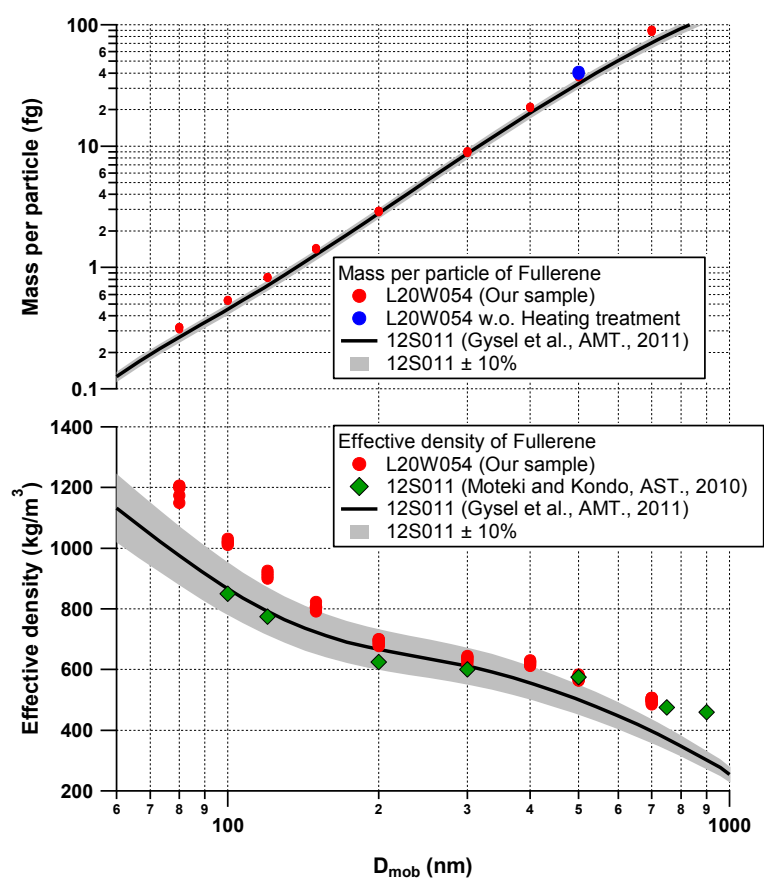


Figure. S1 The mass of FS particles and effective density as a function of is mobility diameter. The Effective density of FS particles was measured using a DMA-APM-CPC system.

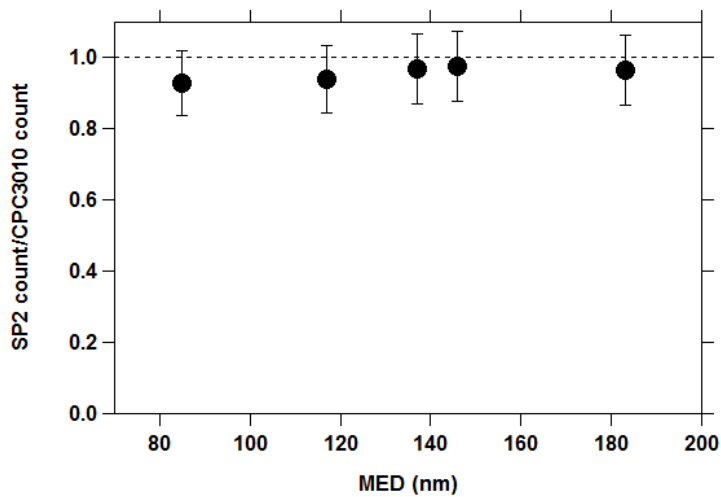


Figure S2. Detection efficiency of SP2 as a function of mass equivalent diameter of rBC particle at 80 nm ~ 190 nm. The y-axis represents the count ratio between SP2 and CPC3010 measurements

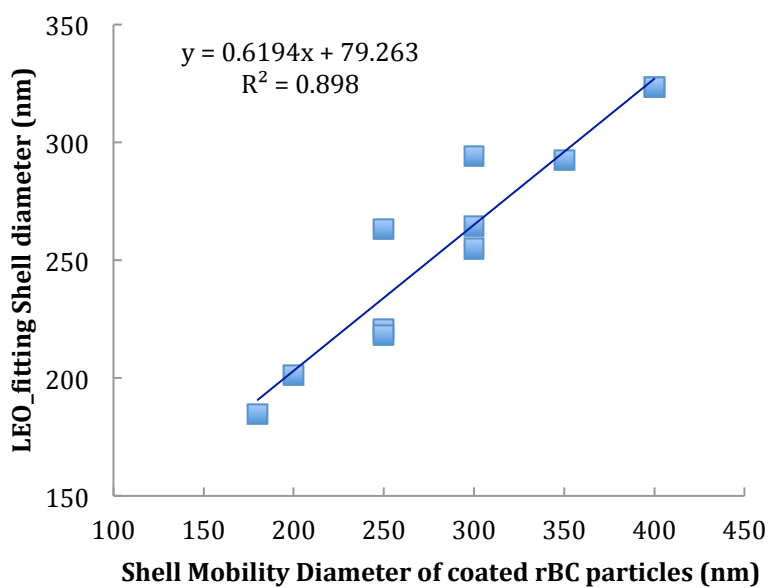


Figure S3. Scatter plot and linear regression of LEO_fitting Shell diameter of coated rBC and its Mobility diameter determined by Tandem DMA-SP2 system.

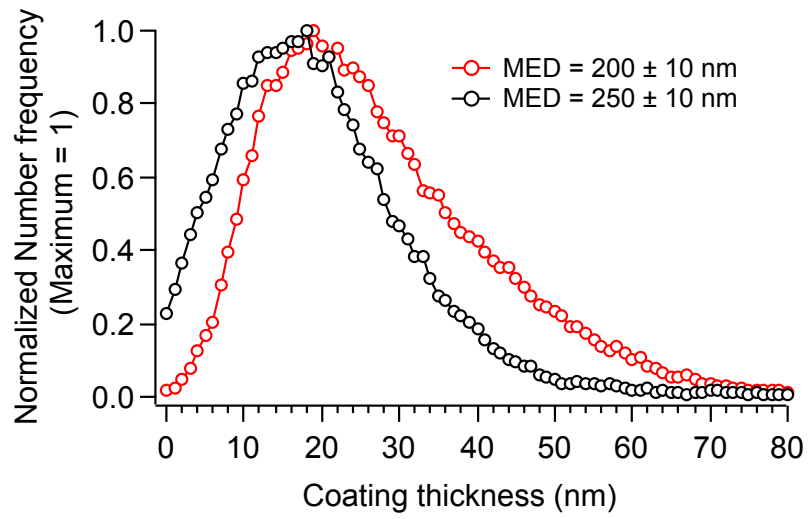


Figure S4. Coating thickness of rBC particles with MED = 200 ± 10 nm and MED = 250 ± 10 nm.