

Supporting information for: Investigation of the mixing layer height derived from ceilometer measurements in the Kathmandu Valley and implications for local air quality

Andrea Mues¹, Maheswar Rupakheti¹, Christoph Münkel², Axel Lauer³, Heiko Bozem⁴, Peter Hoor⁴, Tim Butler¹, and Mark Lawrence¹

¹Institute for Advanced Sustainability Studies (IASS), Potsdam, 14467, Germany

²Vaisala GmbH, Hamburg, 22607, Germany

³Deutsches Zentrum für Luft- und Raumfahrt (DLR), Institut für Physik der Atmosphäre, Oberpfaffenhofen, Germany

⁴Institute for Atmospheric Physics, Johannes Gutenberg University Mainz, Mainz, Germany

Correspondence to: A. Mues (andrea.mues@iass-potsdam.de)

Table S1. Overview on the WRF-Chem setup and namelist settings.

WRF-Chem model setup	Description
Domain	
Domain D01	Resolution: 15x15 km ² Latitude: 15.5 ° - 43.5 ° ,Longitude: 67.6 ° - 107.4 ° Number of grid cells: west-east 221, north-south 201
Domain D02	Resolution: 3x3 km ² Latitude: 25.4 ° - 29.6 ° , Longitude: 82.6 ° - 87.9 ° Number of grid cells: west-east 171, north-south 151 No feedback between domains
Vertical levels	Number of levels: 31 Eta-Level Level top: 10hPa
Chemistry	
Chemistry option	RADM2/SORGAM with aqueous reactions included (option 41) (Ackermann et al., 1998; Schell et al., 2001)
Biogenic emission	MEGAN biogenic emissions online based upon the weather, land use data (Guenther et al., 2006)
Biomass burning	Biomass burning emissions and plume rise calculation
Dry deposition	Dry deposition of gas and aerosol species
Dust	GOCART dust emissions with AFWA modifications (Ginoux et al., 2001)
Input data	
Boundary cond. meteorology	ERA-Interim (Dee et al., 2011)
Anthropogenic emissions	EDGAR HTAP (Janssens-Maenhout et al., 2015)
Boundary conditions chemistry	MOZART (Global CTM)

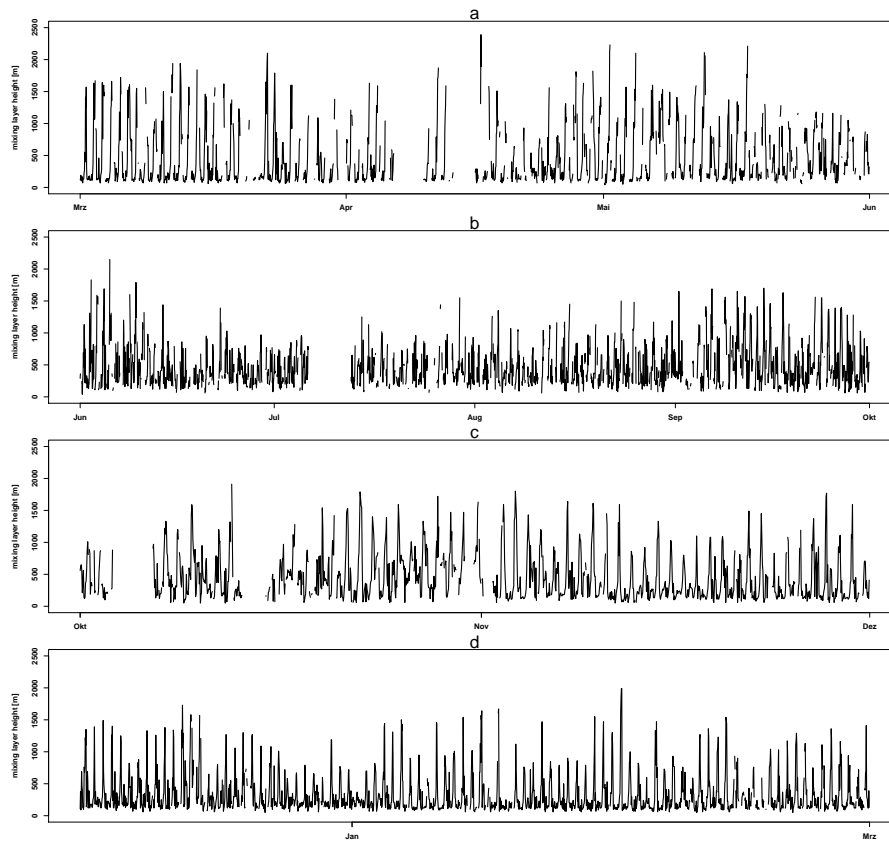


Figure S1. Hourly mixing layer height derived from the ceilometer measurements for the time period March to May 2013 (a), June to September 2013 (b), October to November 2013 (c) and December 2013 to 2014 (d).

References

- Ackermann, I., Hass, H., Memmesheimer, M., Ebel, A., Binkowski, F., and Shankar, U.: Modal Aerosol Dynamics model for Europe: Development and first applications, *Atmospheric Environment*, 32, 2981–2999, doi:10.1016/S1352-2310(98)00006-5, 1998.
- Dee, D. P., Uppala, S. M., Simmons, A. J., Berrisford, P., Poli, P., Kobayashi, S., Andrae, U., Balmaseda, M. A., Balsamo, G., Bauer, P., Bechtold, P., Beljaars, A. C. M., van de Berg, L., Bidlot, J., Bormann, N., Delsol, C., Dragani, R., Fuentes, M., Geer, A. J., Haimberger, L., Healy, S. B., Hersbach, H., Hólm, E. V., Isaksen, I., Kållberg, P., Köhler, M., Matricardi, M., McNally, A. P., Monge-Sanz, B. M., Morcrette, J.-J., Park, B.-K., Peubey, C., de Rosnay, P., Tavolato, C., Thépaut, J.-N., and Vitart, F.: The ERA-Interim reanalysis: configuration and performance of the data assimilation system, *Quarterly Journal of the Royal Meteorological Society*, 137, 553–597, doi:10.1002/qj.828, 2011.
- 5 Ginoux, P., Chin, M., Tegen, I., Prospero, J. M., Holben, B., Dubovik, O., and Lin, S. J.: Sources and distributions of dust aerosols simulated with the GOCART model, *Journal of Geophysical Research Atmospheres*, pp. 20 255–20 273, 2001.
- 10 Guenther, A., Karl, T., Harley, P., Wiedinmyer, C., Palmer, P. I., and Geron, C.: Estimates of global terrestrial isoprene emissions using MEGAN (Model of Emissions of Gases and Aerosols from Nature), *Atmospheric Chemistry and Physics*, 6, 3181–3210, doi:10.5194/acp-6-3181-2006, 2006.
- 15 Janssens-Maenhout, G., Crippa, M., Guizzardi, D., Dentener, F., Muntean, M., Pouliot, G., Keating, T., Zhang, Q., Kurokawa, J., Wankmüller, R., Denier van der Gon, H., Kuenen, J. J. P., Klimont, Z., Frost, G., Darras, S., Koffi, B., and Li, M.: HTAP v2.2: a mosaic of regional and global emission grid maps for 2008 and 2010 to study hemispheric transport of air pollution, *Atmospheric Chemistry and Physics*, 15, 11 411–11 432, doi:10.5194/acp-15-11411-2015, 2015.
- 20 Schell, B., Ackermann, I., Hass, H., Binkowski, F., and Ebel, A.: Modeling the formation of secondary organic aerosol within a comprehensive air quality model system, *Journal of Geophysical Research Atmospheres*, 106, 28 275–28 293, 2001.