

4D-Var Assimilation
of MIPAS

Q. Errera et al.

4D-Var Assimilation of MIPAS chemical observations: ozone and nitrogen dioxide analyses

Q. Errera¹, F. Daerden¹, S. Chabrillat¹, J. C. Lambert¹, W. A. Lahoz²,
S. Viscardy¹, S. Bonjean^{1,*}, and D. Fonteyn^{1,**}

¹Insitut d'Aéronomie Spatiale de Begique, BIRA–IASB, Belgium

²Norsk Institutt for Luftforskning, NILU, Norway

*now at: Sputnik Web, Belgium

**now at: Belgian Federal Science Office, Belgium

Received: 11 January 2008 – Accepted: 26 March 2008 – Published: 22 April 2008

Correspondence to: Q. Errera (quentin.errera@aeronomie.be)

Published by Copernicus Publications on behalf of the European Geosciences Union.

Title Page

Abstract

Introduction

Conclusions

References

Tables

Figures

◀

▶

◀

▶

Back

Close

Full Screen / Esc

Printer-friendly Version

Interactive Discussion



Abstract

This paper discusses the global analyses of stratospheric ozone (O_3) and nitrogen dioxide (NO_2) obtained by the Belgian Assimilation System for Chemical Observations from Envisat (BASCOE). Based on a chemistry transport model (CTM) and the 4-dimensional variational (4D-Var) method, BASCOE has assimilated chemical observations of O_3 , NO_2 , HNO_3 , N_2O , CH_4 and H_2O , made between July 2002 and March 2004 by the Michelson Interferometer for Passive Atmospheric Sounding (MIPAS) onboard the European Space Agency (ESA) Environment Satellite (ENVISAT). This corresponds to the entire period during which MIPAS was operating at its nominal resolution.

Our analyses are evaluated against assimilated MIPAS data and independent HALOE (HALOgen Occultation Experiment) and POAM-III (Polar Ozone and Aerosol Measurement) satellite data. A good agreement is generally found between the analyses and these datasets, in both cases within the estimated error bars of the observations. The benefit of data assimilation is also evaluated using a BASCOE free model run. For O_3 , the gain from the assimilation is significant during ozone hole conditions, and in the lower stratosphere. Elsewhere, the free model run is within the MIPAS uncertainties and the assimilation does not provide significant improvement. For NO_2 , the gain from the assimilation is realized through most of the stratosphere. Using the BASCOE analyses, we estimate the differences between MIPAS data and independent data from HALOE and POAM-III, and find results close to those obtained by classical validation methods involving only direct measurement-to-measurement comparisons. Our results extend and reinforce previous MIPAS data validation efforts by taking account of a much larger variety of atmospheric states and measurement conditions.

This study discusses possible further developments of the BASCOE data assimilation system; these concern the horizontal resolution, a better filtering of NO_2 observations, and the photolysis calculation near the lid of the model. The ozone analyses are publicly available via the PROMOTE project (<http://www.gse-promote.org>).

ACPD

8, 8009–8057, 2008

4D-Var Assimilation of MIPAS

Q. Errera et al.

Title Page

Abstract

Introduction

Conclusions

References

Tables

Figures

◀

▶

◀

▶

Back

Close

Full Screen / Esc

Printer-friendly Version

Interactive Discussion



1 Introduction

Data assimilation is a set of well-known methods that are used to map observations onto a regular grid using the laws of the atmosphere (or other system of interest) embodied in a numerical model. In principle, the resulting “analyses” provide the best estimate of the state of the atmosphere. In numerical weather prediction (NWP), these analyses are used to provide weather forecasts. On the other hand, assimilation systems based on chemical transport models (CTMs) or photochemical box model have broader goals (Lahoz et al., 2007), one of them being the validation of satellite data (Marchand et al., 2004; Vigouroux et al., 2007).

The Michelson Interferometer for Passive Atmospheric Sounding (MIPAS) instrument on board of ESA’s ENVISAT satellite measures the Earth limb emission infrared spectra, from which ESA operational level-1-to-2 processors retrieve the vertical distribution of several key stratospheric species: ozone (O_3), nitric acid (HNO_3), nitrogen dioxide (NO_2), nitrous oxide (N_2O), water vapour (H_2O), and methane (CH_4). Several operational centres and research institutes assimilated MIPAS O_3 data successfully using systems based on various model types (CTMs, or general circulation models, GCMs) and various assimilation methods (sequential and variational, e.g., Dethof, 2003; Wargan et al., 2005; Geer et al., 2006). In particular, Baier et al. (2005) assimilated all the six operational MIPAS constituents. Nevertheless, the above-mentioned studies addressed only a few months of MIPAS data, making it difficult to obtain robust statistics valid for a complete annual cycle of atmospheric states and measurement conditions. This study presents, for the first time, an assimilation of the entire MIPAS level-2 data record available at nominal resolution (July 2002 to March 2004, i.e. 21 months). The assimilation has been performed by the BASCOE (Belgian Assimilation System of Chemical Observations from ENVISAT) 4D-Var data assimilation system. BASCOE is based on a 3D-CTM driven by meteorological analyses of winds and temperature provided by the European Centre for Medium-range Weather Forecasts (ECMWF). Near real time assimilation

4D-Var Assimilation of MIPAS

Q. Errera et al.

Title Page

Abstract

Introduction

Conclusions

References

Tables

Figures

◀

▶

◀

▶

Back

Close

Full Screen / Esc

Printer-friendly Version

Interactive Discussion



of MIPAS level 2 data and short-term chemical forecasts have also been made with an earlier version of BASCOE within the framework of ENVISAT cal/val activities (Fonteyn et al., 2002, 2004, see also <http://bascoe.oma.be>).

The present paper presents and discusses the assimilation of MIPAS level-2 data retrieved with ESA's off-line Instrument Processing Facility (IPF) versions 4.61 and 4.62. We focus on analyses of O₃ and NO₂. Monitoring of independent observations from HALOE (HALOgen Occultation Experiment) and POAM-III (Polar Ozone and Aerosol Measurement) is also achieved during the assimilation procedure; this has not been done in previous MIPAS assimilation studies. The monitoring procedure allows comparison of the BASCOE analyses against HALOE and POAM-III data in an optimal way. Based on our analyses, we estimate the bias and standard deviation between MIPAS and independent data and our results are compared with those obtained by classical validation methods limited to direct measurement-to-measurement comparisons. HALOE, POAM-III and MIPAS data have also been monitored with a six-month free model run, initialized with analysed data. Comparison between the analyses and the free model run allows us to discuss the added value provided by data assimilation. What is new in this paper are: (1) the extended assimilation period (especially for NO₂) which allows us to derive robust statistics valid for the widest range of atmospheric states and measurement conditions; (2) the monitoring procedure, which allows us to evaluate the datasets in an optimal manner; and (3) the use of BASCOE analyses to derive differences between MIPAS and independent data from HALOE and POAM-III, even in absence of direct collocation of the air masses measured by the different satellites.

The paper is organized as follows. Sections 2, 3 and 4 describe, respectively, the BASCOE system, the data used in this study and the set-up of the assimilation experiments. Sections 5 and 6 discuss, respectively, the O₃ and NO₂ analyses. Conclusions and possible further developments are given in Sect. 7.

4D-Var Assimilation of MIPAS

Q. Errera et al.

Title Page

Abstract

Introduction

Conclusions

References

Tables

Figures

◀

▶

◀

▶

Back

Close

Full Screen / Esc

Printer-friendly Version

Interactive Discussion



2 System description

The Belgian Assimilation System of Chemical Observations from ENVISAT (BASCOE, <http://bascoe.oma.be>) is a 4-dimensional variational (4D-Var) system descended from that described in [Errera and Fonteyn \(2001\)](#). Model studies of the 2003 Antarctic winter using the BASCOE CTM coupled with a Polar Stratospheric Cloud (PSC) microphysical scheme can be found in [Daerden et al. \(2007\)](#). [Fonteyn et al. \(2002, 2004\)](#) used a version of BASCOE that includes the microphysical scheme for near real time assimilation of MIPAS. A version of BASCOE close to the one presented here has also been used in the framework of the validation of MIPAS HNO₃ and N₂O ([Vigouroux et al., 2007](#)).

In the BASCOE version presented here, the microphysical scheme has been replaced by a parameterization to reduce the computing time. Nevertheless, this latest version has also the capability to run in near real time.

2.1 The 3D-CTM

All chemical species are advected using the Flux Form Semi-Lagrangian scheme ([Lin and Rood, 1996](#)) with a time step of 30 min; The CTM is driven by ECMWF operational analyses of winds and temperatures, and uses a subset of 37 of the 60 ECMWF model levels, from the surface to 0.1 hPa, on a 5° longitude by 3.75° latitude grid. The model grid type is Arakawa C ([Kalnay, 2003](#)).

The model includes 57 chemical species with a full description of stratospheric chemistry. The species interact through 143 gas-phase reactions, 48 photolysis reactions and 9 heterogeneous reactions. The chemical system of differential equations is built using the Kinetic PreProcessor ([Damian et al., 2002](#)) and is integrated with a third-order Rosenbrock solver ([Hairer and Wanner, 1996](#)). The reaction rates and cross-sections are taken from the JPL compilation Evaluation 14 ([Sander et al., 2003](#)).

The Surface Area Density (SAD) of sulfate aerosols is prescribed as a function of pressure and latitude, using the climatological distribution described by [Daerden et al.](#)

Title Page

Abstract

Introduction

Conclusions

References

Tables

Figures

◀

▶

◀

▶

Back

Close

Full Screen / Esc

Printer-friendly Version

Interactive Discussion



4D-Var Assimilation
of MIPAS

Q. Errera et al.

Title Page

Abstract

Introduction

Conclusions

References

Tables

Figures

I◀

▶I

◀

▶

Back

Close

Full Screen / Esc

Printer-friendly Version

Interactive Discussion



(2007). While Daerden et al. (2007) couple a PSC microphysical scheme to the CTM, here we use a parameterization that sets the surface area density of PSCs and calculates the loss of HNO_3 and H_2O by PSC sedimentation as a function of temperature. Ice PSCs are presumed to exist in the winter/spring Polar Regions at any grid point where the temperature is colder than 186 K, and Nitric Acid Tri-hydrate (NAT) PSCs at any grid point where the temperature is colder than 194 K. The surface area density is set to $10^{-6} \text{cm}^{-2}/\text{cm}^{-3}$ for ice PSCs and $10^{-7} \text{cm}^{-2}/\text{cm}^{-3}$ for NAT PSCs. The sedimentation of PSC particles causes denitrification and dehydration. This process is also approximated in a very simple way, by an exponential decay of HNO_3 with a characteristic time-scale of 100 days for gridpoints where NAT particles are supposed to exist, and an exponential decay of HNO_3 and H_2O with a characteristic time-scale of 9 days for gridpoints where ice particles are supposed to exist (Solomon and Brasseur, 1997).

All species simply have null flux as upper and lower boundary conditions. While the model extends down to the surface, it does not include any tropospheric process and is not expected to produce a realistic chemical composition below the tropopause.

2.2 The 4D-Var system

Data assimilation is done using 4D-Var (Talagrand and Courtier, 1987). This method optimizes the model initial conditions to reproduce a set of observations over a time window. This is done by minimizing the following objective function, $J(\mathbf{x})$ (also denoted cost function) (Talagrand and Courtier, 1987):

$$J(\mathbf{x}) = \frac{1}{2} [\mathbf{x}(t_0) - \mathbf{x}^b(t_0)]^T \mathbf{B}_0^{-1} [\mathbf{x}(t_0) - \mathbf{x}^b(t_0)] + \frac{1}{2} \sum_{i=0}^N (\mathbf{y}^o(t_i) - H(\mathbf{x}(t_i)))^T \mathbf{R}_i^{-1} (\mathbf{y}^o(t_i) - H(\mathbf{x}(t_i))) \quad (1)$$

given the model evolution equation

$$\mathbf{x}(t_i) = M_{i-1}[\mathbf{x}(t_i - 1)] \quad (2)$$

where $\mathbf{x}(t_i)$ represents the model state vector at time t_i , $\mathbf{x}^b(t_0)$ is the first guess and \mathbf{B}_0 is the background covariance matrix of $\mathbf{x}^b(t_0)$. Vectors $\mathbf{y}^o(t_i)$ and matrix \mathbf{R}_i are, respectively, the observation state vector and the error covariance matrix associated with the observations at time t_i . The observation operator H maps the model state into the observation space and M is the model operator that calculates the time evolution of the model state. Minimization of Eq. (1) requires the knowledge of the gradient of J . This is done using the adjoint of the forward (or direct) model. The minimization of the objective function uses the quasi-Newton algorithm M1QN3 (Gilbert and Lemarechal, 1989) and the system is preconditioned (Bouttier and Courtier, 2002).

Three processes in the BASCOE model affect chemical concentrations: advection, chemistry and the PSC parameterization. The adjoint code of these processes is required for implementation of 4D-Var. Although the number of species and reactions, and the advection scheme have changed since Errera and Fonteyn (2001), their adjoint has been built following the same procedure. The adjoint of the PSC parameterization has been built by hand. Note that several approaches can be used to build chemistry adjoints (see Sandu et al., 2003, for a review). In one approach, the adjoint of the chemistry is the adjoint of the chemical system of equations and the backward integration in time is done with the same integrator as for the forward case, as is done in Errera and Fonteyn (2001). Sandu et al. (2003) discuss what they term the continuous and discrete approaches to the calculation of chemistry adjoints. In this context, the approach of Errera and Fonteyn (2001) falls in the continuous category. If one wishes to avoid this approximation, which means using the discrete approach, the adjoint of the integrator for the backward case should also be built.

Because the set-up of Errera and Fonteyn (2001) gave good results, it was used in the formulation of the BASCOE adjoint. However, there are four time periods where the minimization is not attained, i.e., the system is not able to reduce J during the iteration

4D-Var Assimilation of MIPAS

Q. Errera et al.

Title Page

Abstract

Introduction

Conclusions

References

Tables

Figures

◀

▶

◀

▶

Back

Close

Full Screen / Esc

Printer-friendly Version

Interactive Discussion



process. These periods are: (1) 6 days in September 2002, during the Antarctic vortex split; (2) 6 days during mid February 2002; (3) 15 days during March 2003; and (4) 17 days between mid September and the beginning of October 2003.

The reasons for this failure are still under investigation. However, there are clues that point to possible causes. For example, the problem occurs with data located above 3 hPa and in the Polar Regions. We do not think that the source of this problem is due to the observations because: (1) data corresponding to days without minimization are not so different than data for days where the minimization is achieved; and (2) a data filter is already implemented to reject outliers (see Sect. 4). It is more likely that the fast dynamical changes that can occur in the high Polar Stratosphere are not compatible with the approximations used to calculate the adjoint of the chemistry. As a result, small errors arising from these approximations are amplified by the adjoint of the transport.

In order to provide the most complete dataset of analyses and avoid problematic cases, we choose to filter out all observations for levels above 3 hPa and for latitudes poleward of $|\pm 50^\circ|$ for these days.

3 The observations

Three satellite datasets are used in this study: MIPAS data are assimilated by the BASCOE system to constrain its CTM outputs, while HALOE and POAM-III data are monitored by the system and used for a posteriori evaluation of the BASCOE analyses. In the monitoring procedure, BASCOE searches for any observations from HALOE and POAM-III at each model time step. If any measured profile is found within a time window of 30 min around the model time step, geographically surrounding BASCOE profiles are interpolated spatially to the tangent point geolocation of the HALOE or POAM-III measurements, and saved into a file. Using this method, there is no temporal interpolation, and the maximum time mismatch between measurement and model values is 15 min. This is an important detail, especially for NO_2 evaluation, given the diurnal cycle of this species and its rapid variation at scales of minutes during twilight.

4D-Var Assimilation of MIPAS

Q. Errera et al.

Title Page

Abstract

Introduction

Conclusions

References

Tables

Figures

◀

▶

◀

▶

Back

Close

Full Screen / Esc

Printer-friendly Version

Interactive Discussion



Note that, unlike in NWP centers, the monitoring procedure is not commonly used by the assimilation system of research institutes. Note that BASCOE analyses are also saved in the MIPAS observation space.

3.1 MIPAS

5 The ENVISAT MIPAS instrument measures nighttime and daytime Earth limb emission high-resolution spectra with a Michelson interferometer (Fischer et al., 2000). The vertical distribution of numerous atmospheric trace gas can be retrieved from MIPAS spectra using Fourier Transform spectroscopy. Here, the six chemical species retrieved operationally by ESA's off-line processor are assimilated: O₃, HNO₃, H₂O, NO₂, N₂O and CH₄. All species are assimilated together without any distinction of day or night
10 data. Usually there are around 1000 MIPAS profiles per day. Twenty-one months of data have been assimilated (18 July 2002–26 March 2004). We combine off-line versions 4.61 and 4.62 to increase the period of MIPAS observations: for example, after 7 December 2003, only v4.62 data are available. However, each daily dataset comes
15 from a single version. Both ozone (v4.61 and v4.62, Cortesi et al., 2007) and nitrogen dioxide (v4.61, Wetzel et al., 2007) have been validated for scientific applications. Between 1 to 50 hPa, the ozone bias with respect to correlative data is lower than 10%; it increases to 25% at 100 hPa. At levels above 1 hPa, the number of correlative data are too small to derive quantitative conclusions (Cortesi et al., 2007). In the lower and mid-
20 dle stratosphere (below 45 km), the accuracy and precision of MIPAS NO₂ is 10–20% and 5–15%, respectively (Wetzel et al., 2007).

3.2 HALOE

Operating aboard NASA's Upper Atmosphere Research Satellite (UARS) from 1991 through 2005, HALOE (Russell III et al., 1993) used solar occultation to measure atmospheric constituent profiles of O₃, NO, NO₂, HCl, CH₄, HF and aerosol extinction.
25 About 15 sunset and sunrise occultations (30 all together) were performed every day.

4D-Var Assimilation of MIPAS

Q. Errera et al.

Title Page

Abstract

Introduction

Conclusions

References

Tables

Figures

◀

▶

◀

▶

Back

Close

Full Screen / Esc

Printer-friendly Version

Interactive Discussion



The 56° inclination of the UARS orbit generated a small daily precession of the latitude of the sunrises and sunsets, yielding global coverage from 50° S–80° N to 50° N–80° S in about one month. Version 19 of HALOE, the latest version available publicly, is used here to validate the BASCOE analyses. Intercomparison of ozone with correlative data (acquired by ozonesonde, lidar, balloon-borne remote sensing, rocketsondes and other satellites) shows good agreement, usually within the estimated measurement errors, between 0.03 to 100 hPa. HALOE ozone errors are 11% at 0.1 hPa, 5% between 1 and 30 hPa, and gradually increase to 30% at 100 hPa (Brühl et al., 1996, for version 17; see Sect. 3.3 for version 19 updates). For levels below 120 hPa, HALOE profiles can be seriously affected by the presence of aerosols and cirrus clouds (Bhatt et al., 1999). The HALOE NO and NO₂ measurements have been validated using satellite, balloon and ground based measurements (Gordley et al., 1996, for version 17). In the middle stratosphere, the NO₂ measurements show mean differences with independent data of about 10 to 15%. NO differences in the middle stratosphere are similar, but sometimes show a negative bias (as much as 35%) between 30 and 60 km with some correlative measurements. In this study, analyses of NO_x (NO+NO₂) are compared with HALOE NO_x. This is done to minimize the error at the terminator due to the maximum time shift of 15 min between BASCOE analyses and observations (see above).

3.3 POAM-III

Owing to the polar orbit of the SPOT-4 platform (98.6° inclination), POAM-III, which is also a solar occultation instrument, measures the vertical distribution of the chemical stratospheric constituents O₃, NO₂, H₂O and aerosol extinction in the Polar Regions (Lucke et al., 1999). Here we use the latest POAM-III version 4 data. Since the SPOT-4 orbit has helio-synchronous precession, the latitude of occultations varies only slightly with the season, and it remains in the Polar Regions, in the 63° S–88° S and 55° N–71° N ranges. In its original configuration (Lumpe et al., 2002), POAM-III recorded 14 sunrise and 14 sunset occultations per day, corresponding to the Northern Hemisphere (NH) and Southern Hemisphere (SH), respectively. However, after about one year,

4D-Var Assimilation of MIPAS

Q. Errera et al.

Title Page

Abstract

Introduction

Conclusions

References

Tables

Figures

◀

▶

◀

▶

Back

Close

Full Screen / Esc

Printer-friendly Version

Interactive Discussion



**4D-Var Assimilation
of MIPAS**

Q. Errera et al.

Title Page

Abstract

Introduction

Conclusions

References

Tables

Figures

◀

▶

◀

▶

Back

Close

Full Screen / Esc

Printer-friendly Version

Interactive Discussion



POAM-III developed a mechanical problem with the azimuthal motion (Karl Hoppel, personal communication). In order to reduce this motion, SH and NH measurements were made on alternate days, which decrease the nominal number of daily occultations by a factor of 2. The terms “sunset” and “sunrise” used in Lumpe et al. (2002) refer to spacecraft geometry, not to the local ground time. Sunrise is when the spacecraft goes from dark to light, and sunset is when the opposite occurs. For the POAM-III orbit, NH measurements (spacecraft sunrise) always occur at the local sunset time. In the SH, the local time of the POAM-III measurements switch from sunset to sunrise around the spring Equinox in the beginning of April, and switch from sunrise to sunset around the autumn Equinox in the beginning of September. This configuration can affect intercomparison against BASCOE, especially for NO₂ (see Sect. 6 and Randall et al., 2007). In the following, POAM-III sunset and sunrise will refer to the local ground time, not to the spacecraft time.

On average, POAM-III version 4 O₃ profiles agree within 5% with respect to correlative data (HALOE version 19, SAGE-II version 6.20 and ozonesondes) from 13 to 60 km (Randall et al., 2003). Comparison of POAM-III version 4 and HALOE version 19 NO₂ data shows good agreement, within 6% from 20 to 33 km and increasing to 12% at 40 km (Randall et al., 2002).

3.4 Intercomparison method

As mentioned above, BASCOE outputs are saved in the observation space of the instruments whose data are monitored or assimilated. The BASCOE and observational datasets are intercompared by calculating the bias and standard deviation for selected latitude and pressure bins. Five standard latitude bins are defined using the following six boundaries: -90°, -60°, -30°, 30°, 60°, and 90°. Pressure layer bins are based on the UARS pressure grid, calculated from the following formula (in hPa): 10^{*i*/12}, *i* = -12, -10, -8, . . . , 40. The pressure levels indicating the pressure layers are defined using the same formula with *i* = -11, -9, -7, . . . , 41. The lower and upper pres-

sure boundaries are at 0.1 and 261 hPa, respectively. Thus, 21 pressure bins are used from the upper stratosphere lower mesosphere (USLM) to the upper troposphere lower stratosphere (UTLS). The bias and standard deviation between analyses and observations are calculated for each latitude/pressure interval. Biases are calculated as the difference Observation minus Analyses. Thus, a positive bias indicates that BASCOE underestimates the observations. Both standard deviation and bias are averaged for the time periods of interest. In general, bias and standard deviation are given in relative units (percent). In this case, they are normalized by the mean of the observations in the time/latitude/pressure interval. Note that, unlike (Geer et al., 2006), we do not interpolate the data nor the analyses to a regular grid.

4 BASCOE Set-up

BASCOE runs are initialized with three dimensional fields of atmospheric constituents on 12 July 2002 calculated by the SLIMCAT CTM (Chipperfield, 1999). BASCOE is run in the free model mode until the first day of MIPAS observations (18 July 2002). For each species, the assimilation is done with the background standard deviation set to 20% of the background volume mixing ratio. No off-diagonal elements are considered in the background error covariance matrix, and both spatial and species-species correlations are neglected.

MIPAS data provided by ESA only include their instrumental error. When this study was started, MIPAS total errors (including retrieval errors) were not available (Raspollini et al., 2006). Thus, if MIPAS data were to be assimilated using only the instrumental error, the weight of the observations in the final analyses would be too important. To avoid this, we add an error of 8.5% for each MIPAS species and at each location; this arbitrary value has been tested for a few days of assimilation and found to be satisfactory. It has been kept for the complete period presented in this paper. With this error set-up, MIPAS total errors for O₃ and NO₂ are, to a first approximation, close to the total errors. Note that we do not include any error of representativeness, e.g.,

4D-Var Assimilation of MIPAS

Q. Errera et al.

Title Page

Abstract

Introduction

Conclusions

References

Tables

Figures

◀

▶

◀

▶

Back

Close

Full Screen / Esc

Printer-friendly Version

Interactive Discussion



to take into account the error introduced by the spatial interpolation and the time-lag between BASCOE and MIPAS. This error could be significant, especially for NO₂ when monitoring occultation instruments.

In order to prevent outlier data unduly constraining the system, an Optimal Interpolation Quality Check (OIQC, Gauthier et al., 2003) was set-up for the near-real-time BASCOE assimilation. This set-up has been kept for the off-line assimilation discussed in this paper. It rejects data when the difference between the data and the background is greater than three times the background error. We will see later that this filter prevents the assimilation of NO₂ produced by Energetic Particles Precipitation (EPP) processes like Solar Proton Events (SPEs). A better filter would involve comparison of MIPAS data with similar stratospheric conditions and the rejection, for example, of data that are outside a selected percentile interval, e.g. [5,95].

In addition to the assimilation, a free model run of the BASCOE CTM is done to evaluate the benefits of the assimilation. This control run starts on 1 May 2003 and ends on 30 November 2003. It is initialized by the BASCOE analyses on 1 May.

5 Ozone results

5.1 BASCOE vs. MIPAS

The general qualitative agreement between MIPAS ozone data and BASCOE ozone analyses is illustrated in Fig. 1. It shows the ozone zonal mean on 6 October 2003 for MIPAS and the corresponding analyses. The vertical layers are the 17 MIPAS levels and the latitudinal average is done with 5° resolution. Below the ozone maximum (around MIPAS retrieval level 9), the agreement between MIPAS and BASCOE is excellent, with minor differences between both datasets. Above this level, BASCOE underestimates the ozone MIPAS data (the isolines do not fit the isocontours), but the differences are not too high.

In order to quantify the agreement between BASCOE and MIPAS, we show in Fig. 2

4D-Var Assimilation of MIPAS

Q. Errera et al.

Title Page

Abstract

Introduction

Conclusions

References

Tables

Figures

◀

▶

◀

▶

Back

Close

Full Screen / Esc

Printer-friendly Version

Interactive Discussion



the bias and standard deviation for three comparisons: (1) MIPAS assimilated data against BASCOE (“stat1”), (2) all MIPAS data (i.e., including data rejected by the quality control filter) against BASCOE (“stat2”), and (3) all MIPAS data against the control run described in Sect. 4 (“stat3”). The statistics are calculated using the method described in Sect. 3.4. They are calculated for the period September–October 2003, five latitude bands and 21 pressure layers. The figure also shows the number of observations used to compute the statistics, and the MIPAS total error for ozone (see Sect. 4). From Fig. 2, we can make several remarks:

- In the stratosphere, the number of data assimilated is generally similar to the total available observations, indicating that few observations are filtered out. Thus, the bias and standard deviation of stat1 and stat2 are similar. Rejected data correspond to either observations at the tropopause and levels below in the troposphere, or to data at the South Pole during ozone hole conditions. In both these cases, the bias and standard deviation are generally lower when only assimilated MIPAS data (stat1) are considered.
- In the stratosphere, the bias and standard deviation between BASCOE and all MIPAS data (stat2) are generally smaller than the O₃ MIPAS total error. The bias in stat2 is generally not significant. For example, at 10 hPa, biases are within [−2, 3]%. There are two regions where BASCOE fails to reproduce MIPAS within its uncertainty. Around 0.5 hPa, MIPAS is underestimated by BASCOE with a significant bias of around 20% (see the later discussion on the analyses around the 0.5 hPa level). The second region where BASCOE presents a significant bias against MIPAS is at the South Pole during ozone hole conditions. For example, BASCOE overestimates MIPAS around 13% at 100 hPa. The standard deviation is also high, around 40% in the South Pole lower stratosphere. However, in these cases, absolute differences might be a better estimator of the BASCOE quality since observed ozone amounts can be close to zero. The ozone hole representation by BASCOE is further discussed in Sect. 5.2.

4D-Var Assimilation of MIPAS

Q. Errera et al.

Title Page

Abstract

Introduction

Conclusions

References

Tables

Figures

◀

▶

◀

▶

Back

Close

Full Screen / Esc

Printer-friendly Version

Interactive Discussion



**4D-Var Assimilation
of MIPAS**Q. Errera et al.

- BASCOE analyses values at the tropopause and levels below are very different from the observations. This is due to the absence of tropospheric processes in the BASCOE CTM.
- The statistics from the analyses and the control run (stat3) are similar for levels above 10 hPa. For levels below 50 hPa, biases from the analyses are smaller by a few percent with respect to the control run. No significant differences can be seen in the standard deviation for levels below 10 hPa outside the South Pole. For levels above 10 hPa, the model is already within the error bars of MIPAS and the impact of the observations is small. For example, at 10 hPa in the Tropics the bias between MIPAS and the control run is around 6%, while the bias for the same comparison against BASCOE (stat2) is around 2%. At the South Pole, however, the analyses show a clear benefit from data assimilation. For example, assimilation reduces the bias by 35% at 100 hPa. Between the lower stratosphere and the tropopause, a clear benefit from data assimilation is also seen in the bias and the standard deviation statistics.

In order to assess the temporal consistency of the BASCOE analyses, we plot in Fig. 3 the time series of the bias and the standard deviation of the differences between BASCOE and MIPAS (stat2) for three pressure layers, five latitude bands and the entire twenty-one months of assimilation. Around the ozone maximum, between 8 and 12 hPa, the statistics are stable in time except for the standard deviation at the winter Poles (e.g. we observe a maximum of 20% for the standard deviation in July). For all other latitudes and time periods at levels around the ozone maximum, the bias and standard deviation of the differences are not significant. At higher levels, between 0.6 and 1.8 hPa, BASCOE underestimates MIPAS, as discussed above. For levels between 82 and 121 hPa, the bias and standard deviation are generally consistent in time except at the Tropics and during the ozone hole period. In general, the statistics show higher variability at the Poles and at the tropical tropopause, two regions that can have a strong dynamical barrier. Increasing the resolution of BASCOE would likely reduce

[Title Page](#)[Abstract](#)[Introduction](#)[Conclusions](#)[References](#)[Tables](#)[Figures](#)[◀](#)[▶](#)[◀](#)[▶](#)[Back](#)[Close](#)[Full Screen / Esc](#)[Printer-friendly Version](#)[Interactive Discussion](#)

the bias and standard deviation, as discussed by [Strahan and Polansky \(2006\)](#).

We now consider the underestimation of MIPAS data by BASCOE at levels around 0.5 hPa, Fig. 4 shows the bias between MIPAS and BASCOE (stat2), and MIPAS and the control run (stat3). For this plot, we show the statistics for MIPAS nighttime and daytime data separately. The main differences between the daytime and nighttime statistics occur around 0.5 hPa and levels above, where there is significant bias between BASCOE and MIPAS. The control run shows the same behaviour, with a bias slightly higher than that for the analyses. This suggests the bias comes from the model, unlike stated in [Errera et al. \(2007\)](#) who mentioned a potential problem in the MIPAS observations. We suggest that this low bias is related to photolysis calculations in BASCOE, a bias that cannot be reduced by the assimilation. The 0.5 hPa level is close to the third pressure layer of BASCOE, which is close to the model lid. Hence, improving the photolysis calculations at these levels would require adding extra model layers above 0.1 hPa; changes that are not currently planned.

5.2 BASCOE vs. independent observations

To validate the analyses, we compare them against independent observations from HALOE and POAM-III. Figure 5 shows the bias and standard deviation of the differences between BASCOE and, respectively, independent observations from HALOE and POAM-III, for the period September–October 2003. This period is representative of the 21 months considered here, except for the lower South Pole stratosphere. We recall that HALOE ozone errors are about 11% at 0.1 hPa, 5% between 1 and 30 hPa and gradually increase to 30% at 100 hPa ([Brühl et al., 1996](#)). POAM-III errors are below 5% throughout the polar stratosphere ([Randall et al., 2003](#)). In the middle stratosphere, between 2 and 50 hPa, and outside ozone hole conditions, the agreement between BASCOE and independent data from HALOE and POAM-III is generally within HALOE and POAM-III uncertainties, i.e., bias and standard deviation are both lower than 5%. Between 50 and 100 hPa, the bias remains below 10% but the standard deviation increases to 90% at the Tropics and 20% at the other latitude bands (Fig. 5).

4D-Var Assimilation of MIPAS

Q. Errera et al.

Title Page

Abstract

Introduction

Conclusions

References

Tables

Figures

◀

▶

◀

▶

Back

Close

Full Screen / Esc

Printer-friendly Version

Interactive Discussion



Because aerosol and cirrus clouds at levels below 120 hPa can seriously affect HALOE data, it is better to assess the quality of BASCOE analyses against other datasets less affected by Mie scattering, e.g. ozonesondes. This was done in the ASSET ozone intercomparison study (Geer et al., 2006). In that work it was shown that for levels below 100 hPa, BASCOE underestimates ozonesondes. For levels below 100 hPa at the Tropics and levels below 200 hPa in the Extra-tropics, this underestimation is around 50%. This is due to the fact that BASCOE is not designed for the troposphere, does not include a proper parameterization of troposphere-stratosphere exchange, and is not tuned to adjust tropospheric ozone to more realistic values (e.g. from climatology).

Above 2 hPa, the bias increases and is maximum around 0.7 hPa. The highest bias is found at the Tropics where BASCOE underestimates HALOE by 11%. As mentioned in Sect. 5.1, this is probably due to the set-up of the photolysis rate calculations. While significant, this bias is much smaller than the bias between BASCOE and MIPAS. This confirms the probable role of photolysis in the discrepancy since the local time of measurement between MIPAS and HALOE is different. At twilight (HALOE), the impact of the photolysis rate calculation is less important on the ozone chemistry than during daytime (MIPAS). Above 0.5 hPa, the standard deviation increases slightly, reflecting the increased variability in observed ozone due to its diurnal cycle at these levels.

During the 2003 ozone hole the bias between BASCOE and independent data is significant. The bias between BASCOE and POAM-III is around 100% at 100 hPa. However, the amount of ozone is so low that relative differences are no longer meaningful. In Fig. 6 we show a time series of POAM-III ozone averaged over two days for SH occultations and the corresponding BASCOE analyses. Ozone amounts are expressed as number densities to focus on the ozone hole altitude range. In general, BASCOE ozone is close to POAM-III data. The 2003 ozone hole observed by POAM-III is qualitatively well reproduced by BASCOE, in agreement with Geer et al. (2006, see their Fig. 23) who show good agreement between BASCOE and ozonesondes at altitudes representative of the 2003 ozone hole. Absolute differences between POAM-III and BASCOE are in the range $[-6, -2] \times 10^{11}$ molec/cm³ between 30 and

4D-Var Assimilation of MIPAS

Q. Errera et al.

Title Page

Abstract

Introduction

Conclusions

References

Tables

Figures

◀

▶

◀

▶

Back

Close

Full Screen / Esc

Printer-friendly Version

Interactive Discussion



100 hPa; standard deviations are lower than 3×10^{11} molec/cm³. With respect to other assimilation systems (see, e.g., [Geer et al., 2006](#)), the ozone hole reproduced by BASCOE is qualitatively good. Nevertheless, a more advanced PSC parameterization (e.g., [Chipperfield, 1999](#); [Lefèvre et al., 1998](#)) could improve the ozone hole representation.

Ozone analyses during the 2002 ozone hole overestimate POAM-III: this is the only period where BASCOE disagrees qualitatively with POAM-III. This is due to the lack of MIPAS data from 29 September to 11 October 2002, combined with the difficulty of BASCOE, due to its relatively low resolution, to capture realistically the dynamical evolution during the vortex split of 2002 ([Newman and Nash, 2005](#)). For example, averaged ozone observed by POAM-III at 68 hPa is around 1.5×10^{12} molec/cm³ while BASCOE analyses for the same period show values around 3.5×10^{12} molec/cm³. Based on these statistics, we conclude there is satisfactory agreement between BASCOE analyses and independent data except during the 2002 Antarctic ozone hole. Using these statistics, uncertainties of the BASCOE ozone analyses using HALOE and POAM-III have been estimated (Table 1). No values are given for the 2002 Antarctic ozone hole since BASCOE values are qualitatively too far away from independent observations.

5.3 Estimation of differences between MIPAS and independent observations using BASCOE analyses

Due to temporal variability and geographical gradients in atmospheric composition, temporal and spatial mismatches between two profile measurements can enhance dramatically the total error budget of their comparison and consequently preclude the intended determination of their bias and standard deviation. In order to reduce at best this contribution, classical satellite-to-satellite comparisons are usually limited to pairs of profiles selected through pre-defined co-location criteria. For example, in their MIPAS ozone validation paper, [Cortesi et al. \(2007](#), hereafter denoted C2007) adopted a maximum geographical distance of 300 km and a maximum time difference of 3 h

4D-Var Assimilation of MIPAS

Q. Errera et al.

Title Page

Abstract

Introduction

Conclusions

References

Tables

Figures

◀

▶

◀

▶

Back

Close

Full Screen / Esc

Printer-friendly Version

Interactive Discussion



between the MIPAS and HALOE observations, yielding for the period from July 2002 to March 2004 a total of 141 profile pairs. The time and space interpolation capabilities offered by the data assimilation increase considerably the amount of co-located profiles that can be compared, since virtually all HALOE profiles can be used. The method consists in estimating differences between MIPAS data and independent observations using BASCOE as a transfer standard: $(\text{MIPAS-IndepObs}) = (\text{MIPAS-BASCOE}) - (\text{IndepObs-BASCOE})$, where IndepObs stand for HALOE and POAM-III.

Differences between MIPAS and HALOE data using this method are shown in Fig. 7a for the year 2003 and for the five latitude bands. These results are based on 8311 HALOE profiles, compared to 141 co-located profiles found by C2007 in the validation paper of MIPAS ozone, i.e., we use 60 times more profiles. The differences between MIPAS and HALOE data using BASCOE analyses as a transfer standard are comparable to the results found by C2007: we also find that MIPAS data are almost always higher than HALOE with less than +10% differences between 0.4 hPa and 60 hPa, and less than +5% differences between 3 hPa and 20 hPa. Where the analyses are of poorer quality, i.e., near the model lid, in the troposphere and at the South Pole during the ozone hole, our method finds larger differences.

Differences between MIPAS and POAM-III data using BASCOE analyses as a transfer standard are shown in Fig. 7b for the year 2003 and for data from both hemispheres. These results are based on 7937 POAM-III profiles, compared with 1571 profiles in C2007, i.e., we use around 5 times more profiles. Again, our results are similar to those obtained by C2007: we find a bias below $\pm 5\%$ between 0.5 hPa and 50 hPa. At 100 hPa, the differences between MIPAS and POAM-III found in C2007 increase to +12% in the NH and +15% in the SH. Again, this agrees with our results.

Differences between MIPAS and independent data from HALOE and POAM-III found here are comparable to those found by classical validation methods (e.g. C2007) when the assimilation system is able to reproduce accurately the MIPAS observations. Values found here reinforce significantly the representativeness of those published by C2007 (especially in the comparison against HALOE data) since a much larger variety

4D-Var Assimilation of MIPAS

Q. Errera et al.

[Title Page](#)[Abstract](#)[Introduction](#)[Conclusions](#)[References](#)[Tables](#)[Figures](#)[◀](#)[▶](#)[◀](#)[▶](#)[Back](#)[Close](#)[Full Screen / Esc](#)[Printer-friendly Version](#)[Interactive Discussion](#)

of atmospheric states and of measurements conditions are taken into account in the statistics presented in this paper.

6 Nitrogen dioxide results

In order to introduce the state of NO_2 during the assimilation period, we show in Fig. 8 the time series of NO_x derived from HALOE sunrise observations and the monitored BASCOE analyses. The agreement between HALOE and BASCOE NO_x data is qualitatively good except at the South Pole for two periods of time where HALOE observed relatively high NO_x concentrations. These periods occur in August 2003 and in December 2003. These periods correspond to enhancement of NO_x by Energetic Particles Precipitation (EPP, [Randall et al., 2007](#)). The first period corresponds to mesospheric NO_x production by precipitating electron of medium energy ([Funke et al., 2005](#)). The second period corresponds to mesospheric-stratospheric NO_x production due to Solar Proton Events (SPEs) that took place from the end of October until mid November 2003 around Halloween ([López-Puertas et al., 2005](#)). The reason why BASCOE fails to reproduce these high NO_x values is due to the fact that: (1) the production of NO_x by EPP is not modelled in BASCOE, and (2) MIPAS high NO_2 values are rejected by the quality control filter. We discuss below how these special events influence the quality of the NO_2 BASCOE analyses.

6.1 BASCOE vs. MIPAS

As for O_3 (Fig. 1), Fig. 9 shows the zonal mean of NO_2 observed by MIPAS and the corresponding analyses on 6 October 2003. In order to separate daytime and nighttime observations, the zonal mean is given for the ascending and descending phases of the satellite. Qualitatively, the agreement between MIPAS and BASCOE is good for both phases. The bias and standard deviation between assimilated MIPAS data and BASCOE analyses are given in Fig. 10 for MIPAS nighttime data. As for O_3 , we presents

4D-Var Assimilation of MIPAS

Q. Errera et al.

Title Page

Abstract

Introduction

Conclusions

References

Tables

Figures

◀

▶

◀

▶

Back

Close

Full Screen / Esc

Printer-friendly Version

Interactive Discussion



the statistics for the comparison between: (1) MIPAS assimilated data and BASCOE (“stat1n”, where n stands for nighttime), (2) MIPAS all data and BASCOE (“stat2n”) and (3) MIPAS all data and the control run (“stat3n”). Here, we focus on a period where NO_x is not influenced by any EPP events, between 1 and 24 October 2003. The number of MIPAS observations per pressure range and latitude band is also plotted. We can make some remarks about Fig. 10:

- Except at the Poles, almost all nighttime observations are assimilated and there is little difference between stat1n and stat2n. At the North Pole, around 40% of the observations are rejected above 3 hPa but bias and standard deviation between stat1n and stat2n remain close; differences are visible only in the standard deviation above 68 hPa. A similar behaviour is found at the South Pole where differences between the two statistics are visible above 0.5 hPa for the bias and 1 hPa for the standard deviation. Hence, rejected data are filtered out due to their variability not because they correspond to conditions that are not modelled; exactly the property that we expect from our data filter.
- For levels above 10 hPa outside the Polar Regions, BASCOE agrees in general with MIPAS (stat2n) within the MIPAS total error. For levels below 10 hPa, the differences are significant. This is probably due to the set-up of sulphate aerosols in BASCOE that influence NO_x in this altitude region. Nevertheless, the amounts of NO_2 become very small below 10 hPa, which makes the differences less significant. Moreover, we did not take into account the error generated by the spatial interpolation and the time-lag between the observations and the model (maximum 15 min), which can be significant due to the NO_2 diurnal cycle (see Sect. 4). We thus conclude that BASCOE NO_2 is in good agreement with MIPAS NO_2 between 60°S and 60°N . At the Polar Regions, the agreement between BASCOE and MIPAS is qualitatively poorer. While biases are generally not significant, the standard deviation is always higher than the total error, around 10% higher at the NO_2 peak (around 5 hPa). We suggest that the low resolution of BASCOE, which

4D-Var Assimilation of MIPAS

Q. Errera et al.

Title Page

Abstract

Introduction

Conclusions

References

Tables

Figures

◀

▶

◀

▶

Back

Close

Full Screen / Esc

Printer-friendly Version

Interactive Discussion



does not allow a strong barrier at the vortex edge, is the origin of this problem.

- For NO_2 , a clear improvement is shown when one compares MIPAS against BASCOE (stat2) instead of the control run (stat3). This is even clearer when looking at statistics above 10 hPa. This illustrates the benefit of assimilating NO_2 observations.

Similar conclusions can be drawn from statistics using MIPAS daytime observations, for which most observations are rejected above 1 hPa. This is due to the relatively low amount of daytime NO_2 above that level (see Fig. 9b). On the other hand, even if these data are not filtered out, NO_2 daytime errors are much larger than the background errors, and thus NO_2 daytime data have little influence on the final analyses.

Time series of the bias and standard deviation for stat2n are given in Fig. 11 for two pressure ranges and the five latitude bands. Outside the period/region of perturbed NO_x , the bias is generally in the range $[-1,7]\%$ and $[-15,7]\%$ at around 3 hPa and 10 hPa, respectively. The corresponding standard deviation is below 15% and 20%, respectively. Taking into account the MIPAS total error and the fact that no error of representativeness is included, we find these values acceptable. During perturbed NO_x periods, the bias and standard deviation can be very high, e.g., 50%. This corresponds to the South Pole and the SH mid-latitudes between June and October 2003, and to the North Pole and NH mid-latitudes after the end of October 2003. For these cases, BASCOE underestimates MIPAS NO_2 .

On the other hand, from June until August at 10 hPa and during June at 3 hPa, BASCOE overestimates MIPAS NO_2 at SH mid-latitudes with a maximum bias of around -30% and -15% , respectively (this was not revealed by the statistics shown in Fig. 10). This period corresponds to the South Polar Vortex, where values of O_3 and N_2O , which drive NO_2 production, are very low. Since the model resolution does not allow a vortex as isolated as it should be, BASCOE NO_2 values are higher than the observations. This overestimation does not appear in the statistics at $[60^\circ\text{S}-90^\circ\text{S}]$ because MIPAS observes the NO_x perturbation by EPP at these latitudes. Thus, as for O_3 , BASCOE

4D-Var Assimilation of MIPAS

Q. Errera et al.

Title Page

Abstract

Introduction

Conclusions

References

Tables

Figures

◀

▶

◀

▶

Back

Close

Full Screen / Esc

Printer-friendly Version

Interactive Discussion



tends to overestimate NO_2 in the Antarctic vortex during winter, likely due to the coarse horizontal resolution of the model.

To conclude this subsection, outside the period when stratospheric NO_x is perturbed, or outside the polar vortex, the assimilation performs well and BASCOE is able to reproduce the MIPAS data within its uncertainties.

6.2 BASCOE vs. independent observations

HALOE and POAM-III data have been monitored by BASCOE during the assimilation of MIPAS data. Time series of NO_2 observed by POAM-III at the South Pole and the monitoring analyses are given in Fig. 12 (see Fig. 8 for the analogous comparison between HALOE NO_x and BASCOE NO_x). Also indicated is the measurement mode, local sunrise (SR) or local sunset (SS). NO_2 time series show a seasonal cycle with relatively low NO_2 during the SH winter (June–August) and higher values during SH summer (December–February). The NH time series also exhibits such a cycle (not shown). Low winter NO_2 is due to the presence of the polar vortex barrier which makes it difficult for N_2O , the NO_2 source gas, to reach the Pole. Moreover, during sunrise, NO increases rapidly while NO_2 decreases and most of the NO_x is thus in the form of NO (Randall et al., 2007). Conversely, during sunset observations, NO_x has relatively higher concentrations of NO_2 . Thus, the switch of the occultation mode of POAM-III around the Equinox (see Sect. 3.3) increases the seasonal variation of NO_2 given by the instrument.

BASCOE also exhibits this seasonal variation, in good qualitative agreement with the POAM-III data. From July to October 2003, POAM-III observes a thin tongue of relatively high NO_2 descending from 2 to 10 hPa. This is the signature of the EPP event discussed above. The effects of the EPP are more apparent in the HALOE observations than in the POAM-III observations (see Fig. 8). The reasons for this are: (1) POAM-III observations throughout most of the winter are done at sunrise, a time where most of the NO_x is in the form of NO, and (2) no POAM-III observations are available above 2 hPa. This explains why the enhanced level of NO_2 is not significantly

4D-Var Assimilation of MIPAS

Q. Errera et al.

Title Page

Abstract

Introduction

Conclusions

References

Tables

Figures

◀

▶

◀

▶

Back

Close

Full Screen / Esc

Printer-friendly Version

Interactive Discussion



higher than the background level. The tongue of relatively high NO_2 is not reproduced by BASCOE for the reasons discussed above.

The bias and standard deviation between BASCOE and independent observations from HALOE (NO_x) and POAM-III (NO_2) are given in Fig. 13. Comparison with HALOE is done for a period where stratospheric NO_x was not perturbed by EPP production, i.e. from August 2002 until March 2004, excluding the periods May–August 2003 and the period of the Halloween SPE. During this period, the bias between HALOE and BASCOE is generally below $\pm 10\%$ (in magnitude) in the pressure range 1–10 hPa, where the NO_x mixing ratio is maximum (Fig. 8). The standard deviation is minimum at the NO_x maximum (around 5 hPa) with values below or close to 10%. Below 10 hPa, we provide the bias and standard deviation in volume mixing ratio, since the amount of NO_2 becomes relatively low. Around 30 hPa, BASCOE overestimates HALOE and we find that the bias and standard deviation do not exceed -0.8 ± 0.8 ppbv. Considering the HALOE errors, which are between 10 and 15% in the middle stratosphere (Gordley et al., 1996), we find no significant bias between the BASCOE analyses and HALOE data.

For reasons given above, comparisons against POAM-III in Fig. 13 are only done during summer, a time when the amount of observed NO_2 is significant. This corresponds to May–August 2003 for the NH comparison and to November–February 2003/2004 for the SH comparison (which is relatively similar to the statistics based on November–February 2002/2003). The bias between BASCOE and POAM-III is higher than that between BASCOE and HALOE, being around 10% at the NO_2 peak (10 hPa, see Fig. 12).

Maximum bias is observed in the SH at 3 hPa (22%). The standard deviation is always below 15%. Based on POAM-III uncertainties (typically below 12%), this suggests a significant bias above 5 hPa in both hemispheres. Below that level, no significant bias between BASCOE NO_2 analyses and POAM-III NO_2 observations is observed.

Table 2 provides the uncertainties of BASCOE NO_x based on the biases and stan-

4D-Var Assimilation of MIPAS

Q. Errera et al.

Title Page

Abstract

Introduction

Conclusions

References

Tables

Figures

◀

▶

◀

▶

Back

Close

Full Screen / Esc

Printer-friendly Version

Interactive Discussion



dard deviations against HALOE. POAM-III data were not used to build this table since it is difficult to interpret disagreements between the differences BASCOE-POAM-III and BASCOE-HALOE. We also only consider periods when the stratosphere is unperturbed by EPP events, meaning that this table is not valid either during the SH 2003 winter or during the Halloween 2003 SPE.

6.3 Estimation of differences between MIPAS and independent observations using BASCOE analyses

Using BASCOE as a transfer standard (see Sect. 5.3), we estimate the difference between MIPAS and independent observations from HALOE and POAM-III. In the pressure range 2–20 hPa, differences between MIPAS and HALOE are between $\pm 13\%$ depending on the latitude band and the pressure level (Fig. 14a). Again, this comparison addresses a period when stratospheric NO_x was not perturbed by EPP production. The validation study of MIPAS NO_2 performed by [Wetzel et al. \(2007, hereafter denoted W2007\)](#) found that MIPAS was high with respect to HALOE over the Antarctic, the southern mid-latitudes and the northern mid-latitudes. For these regions, our results agree with W2007. W2007 find that over the Arctic, MIPAS is low with respect to HALOE. This is not the case here, but the bias over the Arctic is lower than for other latitude bands for levels below 3 hPa. (Note that W2007 do not provide any comparison between MIPAS and HALOE for the Tropics.) Excluding the Tropics, and between 2 and 10 hPa, the highest bias between MIPAS and HALOE found by W2007 is $+20\%$ at 2 hPa in the middle latitudes for both hemispheres, and the lowest bias is -5% at 10 hPa over the Arctic. In general, our values are 5% higher than those found by W2007. We remark that W2007 find 260 HALOE co-located profiles, while we base our results on 6000 HALOE profiles.

Differences between MIPAS NO_2 and POAM-III NO_2 using BASCOE as a transfer standard are given in Fig. 14b. We only provide comparisons for POAM-III sunset data for both hemispheres (as in Fig. 13b), i.e., a NH comparison for May–August 2003 and a SH comparison for November–February 2003/2004. Figure 10 suggests

4D-Var Assimilation of MIPAS

Q. Errera et al.

Title Page

Abstract

Introduction

Conclusions

References

Tables

Figures

◀

▶

◀

▶

Back

Close

Full Screen / Esc

Printer-friendly Version

Interactive Discussion



that MIPAS underestimates POAM-III between $[-15, -6]\%$. W2007 estimate the differences between MIPAS and POAM-III for different periods of time. Two of the periods they choose are close in time to our choice of period: (1) April–June 2003 for NH co-locations; (2) October–December for SH co-locations (see Fig. 11 in W2007). For these cases, they find 36 and 125 co-located profiles, respectively, which have to be compared with 605 and 651 profiles in our case. Differences between MIPAS and POAM-III found here agree with the values from W2007 for NH data: W2007 found MIPAS to be relatively low compared to POAM-III, between $[-15, -10]\%$ for levels above 10 hPa. For SH data, W2007 found that the bias between MIPAS and POAM-III is negative (-10%) at 3 hPa; they found a positive bias of $+15\%$ at 10 hPa. For these two cases, W2007 find that MIPAS and POAM-III agree within their combined errors. The differences between MIPAS and POAM-III found here also agree within the combined errors of the two instruments. In the pressure range 3–10 hPa, the transfer standard method gives differences between instruments in agreement with those given by classical validation methods (e.g. W2007). Moreover, the transfer standard method brings together all the HALOE and POAM-III data, extending the W2007 conclusions to a much larger variety of atmospheric states and measurement conditions.

7 Conclusions

In this paper we evaluate the performance of BASCOE ozone and nitrogen dioxide analyses produced by assimilation of ENVISAT MIPAS data. Although such data had already been assimilated before, previous studies focussed on relatively short assimilation periods, typically a few months. In contrast, the assimilation period addressed by our study covers the entire 21 months (July 2002–March 2004) during which MIPAS operated at its nominal resolution. As well as providing an extended assimilation period (particularly for NO_2), the analyses are evaluated by monitoring independent data from HALOE and POAM-III. A seven-month free model run of the BASCOE CTM, starting in May 2003, is used as a control run to evaluate the benefit of the assimilation. Finally,

4D-Var Assimilation of MIPAS

Q. Errera et al.

Title Page

Abstract

Introduction

Conclusions

References

Tables

Figures

◀

▶

◀

▶

Back

Close

Full Screen / Esc

Printer-friendly Version

Interactive Discussion



BASCOE analyses are used to estimate differences between MIPAS data and HALOE and POAM-III data.

O_3 analyses are found to agree with MIPAS ozone data within the MIPAS errors. Comparison between the analyses and a free model run shows that the benefit of the assimilation is significant during the Antarctic ozone hole and in the lower stratosphere. In other regions, the free model run agrees with the MIPAS data within the MIPAS error bars; thus, while the difference against MIPAS is reduced by the assimilation, this does not provide significant improvement over the free model run. The gain from the assimilation is observed in regions where the model is known to have deficiencies. Comparison against independent data from HALOE and POAM-III shows that the analyses are within the instrumental errors of the independent data. Using BASCOE ozone analyses as a transfer standard, estimates of the bias between MIPAS and HALOE, and MIPAS and POAM-III generally agree with values deduced by the classical validation approaches which limit the comparisons to direct geographical co-location of the measurements. The main advantage of our method is that it increases the number of correlative independent data used to validate MIPAS data; it thus extends and reinforces the classical validation results, as a much larger variety of atmospheric states and of measurement conditions are taken into account.

The behaviour of the NO_2 analyses is more difficult to interpret because during part of the assimilation period, the stratosphere was perturbed by NO_x production from Energetic Particles Precipitation (EPP) events. Nevertheless, during the periods of unperturbed stratospheric NO_x , and around the NO_2 maximum (1–10 hPa), BASCOE is able to reproduce MIPAS daytime and nighttime data within the MIPAS errors. Comparison of BASCOE NO_2 analyses with HALOE and POAM-III independent NO_2 data shows the former to be qualitatively good (within the instrumental errors of the independent data) outside the time period and region perturbed by EPP events. Differences between MIPAS NO_2 data and independent HALOE and POAM-III NO_2 data are derived using BASCOE analyses; they agree with results from the classical method limited to co-located measurements only. As for ozone, this extends and reinforces previous

4D-Var Assimilation of MIPAS

Q. Errera et al.

Title Page

Abstract

Introduction

Conclusions

References

Tables

Figures

◀

▶

◀

▶

Back

Close

Full Screen / Esc

Printer-friendly Version

Interactive Discussion



results on the validity of the MIPAS data.

This study has revealed several weaknesses in the model, or in the set-up of the system that can degrade the analyses: (1) the model resolution is too coarse to describe accurately dynamical barriers like the tropical surf zone or the Polar Vortex; this problem can be solved by increasing the horizontal resolution of the model. (2) The online data filter rejects most of the MIPAS NO₂ observations during EPP events; better formulations of this filter, or off-line filtering of the observations, would alleviate this. A parametrization describing the effect of the EPP on NO_x in the model would also improve the NO₂ analyses. (3) It was found that ozone analyses around 0.5 hPa underestimate the observations (both assimilated and independent). This is likely due to the formulation of the photolysis rate calculations and the fact that 0.5 hPa is close to the model lid (0.1 hPa). We plan to perform experiments to test this hypothesis by using ECMWF wind data posterior to 2006, when ECMWF raised the model top up to 0.01 hPa.

BASCOE O₃ analyses will become available via the PROMOTE project (<http://www.gse-promote.org>), while BASCOE NO₂ analyses and other analysed fields (the latter not yet validated) can be obtained on request by emailing the first author of this paper.

Acknowledgements. We thank M. Chipperfield for providing initial fields from the SLIMCAT CTM; the POAM-III and HALOE teams for making their data available to us; and K. Hoppel for helping to interpret the POAM-III data. Q. Errera, S. Chabrillat and J.-C. Lambert are supported by the Belgian Federal Science Policy in the framework of the BASCOE ProDEX project for QE and SC (PEA 90125) and the CINAMON ProDEX project for JCL (PEA C 15151).

References

Baier, F., Erbertseder, T., Morgenstern, O., Bittner, M., and Brasseur, G.: Assimilation of MIPAS observations using a three-dimensional global chemistry-transport model, *Q. J. Roy. Meteor. Soc.*, 131, 3529–3542, doi:10.1256/qj.05.92, 2005. 8011

4D-Var Assimilation of MIPAS

Q. Errera et al.

Title Page

Abstract

Introduction

Conclusions

References

Tables

Figures

◀

▶

◀

▶

Back

Close

Full Screen / Esc

Printer-friendly Version

Interactive Discussion



**4D-Var Assimilation
of MIPAS**

Q. Errera et al.

Title Page

Abstract

Introduction

Conclusions

References

Tables

Figures

◀

▶

◀

▶

Back

Close

Full Screen / Esc

Printer-friendly Version

Interactive Discussion



Bhatt, P. P., Remsberg, E. E., Gordley, L. L., McInerney, J. M., Brackett, V. G., and Russell III, J. M.: An evaluation of the quality of Halogen Occultation Experiment ozone profiles in the lower stratosphere, *J. Geophys. Res.*, 104, 9261–9276, doi:10.1029/1999JD900058, 1999. [8018](#)

5 Bouttier, F. and Courtier, P.: Data assimilation concepts and methods, March 1999, in: Meteorological Training Course Lecture Series, ECMWF, http://www.ecmwf.int/newsevents/training/course_notes/DATA_ASSIMILATION/ASSIM_CONCEPTS/Assim_concepts.html, 2002. [8015](#)

Brühl, C., Drayson, S. R., Russell, J. M., Crutzen, P. J., McInerney, J. M., Purcell, P. N., Claude, H., Gernandt, H., McGee, T. J., McDermid, I. S., and Gunson, M. R.: Halogen Occultation
10 Experiment ozone channel validation, *J. Geophys. Res.*, 101, 10217–10240, doi:10.1029/95JD02031, 1996. [8018](#), [8024](#)

Chipperfield, M. P.: Multiannual simulations with a three-dimensional chemical transport model, *J. Geophys. Res.*, 103, 1781–1805, 1999. [8020](#), [8026](#)

15 Cortesi, U., Lambert, J. C., De Clercq, C., Bianchini, G., Blumenstock, T., Bracher, A., Castelli, E., Catoire, V., Chance, K. V., De Mazire, M., Demoulin, P., Godin-Beekmann, S., Jones, N., Jucks, K., Keim, C., Kerzenmacher, T., Kuellmann, H., Kuttippurath, J., Iarlori, M., Liu, G. Y., Liu, Y., McDermid, I. S., Meijer, Y. J., Mencaraglia, F., Mikuteit, S., Oelhaf, H., Piccolo, C., Pirre, M., Raspollini, P., Ravegnani, F., Reburn, W. J., Redaelli, G., Remedios, J. J., Sembhi, H., Smale, D., Steck, T., Taddei, A., Varotsos, C., Vigouroux, C., Waterfall, A., Wetzell, G.,
20 and Wood, S.: Geophysical validation of MIPAS-ENVISAT operational ozone data, *Atmos. Chem. Phys.*, 7, 4807–4867, 2007, <http://www.atmos-chem-phys.net/7/4807/2007/>. [8017](#), [8026](#)

Daerden, F., Larsen, N., Chabrilat, S., Errera, Q., Bonjean, S., Fonteyn, D., Hoppel, K., and Fromm, M.: A 3D-CTM with detailed online PSC-microphysics: analysis of the Antarctic winter 2003 by comparison with satellite observations, *Atmos. Chem. Phys.*, 7, 1755–1772,
25 2007, <http://www.atmos-chem-phys.net/7/1755/2007/>. [8013](#), [8014](#)

Damian, V., Sandu, A., Damian, M., Potra, F., and Carmichael, G.: The Kinetic PreProcessor KPP – A Software Environment for Solving Chemical Kinetics, *Comput. Chem. Eng.*, 26, 1567–1579, 2002. [8013](#)

30 Dethof, A.: Assimilation of ozone retrievals from the MIPAS instrument on board ENVISAT, Technical Memorandum 428, ECMWF, Reading, UK, 2003. [8011](#)

Errera, Q. and Fonteyn, D.: Four-dimensional variational chemical assimilation of CRISTA

- stratospheric measurements, *J. Geophys. Res.*, 106, 12 253–12 265, 2001. [8013](#), [8015](#)
- Errera, Q., Bonjean, S., Chabrillat, S., Daerden, F., and Viscardy, S.: BASCOE Assimilation of Ozone and Nitrogen Dioxide observed by MIPAS and GOMOS: Comparison Between the Two Sets of Analyses, in: ESA Special Publication SP-636: Proceedings of Envisat Symposium 2007, 2007. [8024](#)
- 5 Fischer, H., Blom, C., Oelhaf, H., Carli, B., Carlotti, M., Delbouille, L., Ehhalt, D., Flaud, J.-M., Isaksen, I., M., L.-P., McElroy, C. T., and Zander, R.: Envisat-MIPAS An instrument for atmospheric chemistry and climate research, in: ESA Publication SP-1229, edited by Readings, C. and Harris, R. A., European Space Agency, 2000. [8017](#)
- 10 Fonteyn, D., Bonjean, S., Chabrillat, S., Daerden, F., and Errera, Q.: 4D-VAR Chemical Data Assimilation of ENVISAT Chemical Products (BASCOE): Validation Support Issues, in: ESA Special Publication SP-531 : Proceedings of First Envisat Validation Workshop, 2002. [8012](#), [8013](#)
- 15 Fonteyn, D., Lahoz, W., Geer, A., Dethof, A., Wargan, K., Stajner, L., Pawson, S., Rood, R., Bonjean, S., Chabrillat, S., Daerden, F., and Errera, Q.: MIPAS ozone assimilation, in: ESA Special Publication SP-572: Second Workshop on the Atmospheric Chemistry Validation of ENVISAT (ACVE-2), 2004. [8012](#), [8013](#)
- 20 Funke, B., López-Puertas, M., Gil-López, S., von Clarmann, T., Stiller, G. P., Fischer, H., and Kellmann, S.: Downward transport of upper atmospheric NO_x into the polar stratosphere and lower mesosphere during the Antarctic 2003 and Arctic 2002/2003 winters, *J. Geophys. Res.*, 110, D24308, doi:10.1029/2005JD006463, 2005. [8028](#)
- Gauthier, P., Chouinard, C., and Brasnett, B.: Quality Control: methodology and applications, in: *Data Assimilation for the Earth System*, edited by Swinbank, R., Shutyaev, V., and Lahoz, W. A., NATO Science Series, 177–187, Kluwer Academic Publisher, 2003. [8021](#)
- 25 Geer, A. J., Lahoz, W. A., Bekki, S., Bormann, N., Errera, Q., Eskes, H. J., Fonteyn, D., Jackson, D. R., Juckes, M. N., Massart, S., Peuch, V.-H., Rharmili, S., and Segers, A.: The ASSET intercomparison of ozone analyses: method and first results, *Atmos. Chem. Phys.*, 6, 5445–5474, 2006,
<http://www.atmos-chem-phys.net/6/5445/2006/>. [8011](#), [8020](#), [8025](#), [8026](#)
- 30 Gilbert, J.-C. and Lemarchal, C.: Some numerical experiments with variable storage quasi-Newton algorithms, *Math. Prog.*, 407–435, 1989. [8015](#)
- Gordley, L. L., Russell, III, J. M., Mickley, L. J., Frederick, J. E., Park, J. H., Stone, K. A., Beaver, G. M., McInerney, J. M., Deaver, L. E., Toon, G. C., Murcay, F. J., Blatherwick,

**4D-Var Assimilation
of MIPAS**

Q. Errera et al.

Title Page

Abstract

Introduction

Conclusions

References

Tables

Figures

◀

▶

◀

▶

Back

Close

Full Screen / Esc

Printer-friendly Version

Interactive Discussion



**4D-Var Assimilation
of MIPAS**

Q. Errera et al.

Title Page

Abstract

Introduction

Conclusions

References

Tables

Figures

◀

▶

◀

▶

Back

Close

Full Screen / Esc

Printer-friendly Version

Interactive Discussion



R. D., Gunson, M. R., Abbatt, J. P. D., Mauldin, III, R. L., and et al.: Validation of nitric oxide and nitrogen dioxide measurements made by the Halogen Occultation Experiment for UARS platform, *J. Geophys. Res.*, 101, 10 240–10 266, 1996. [8018](#), [8032](#)

Hairer, E. and Wanner, G.: Solving Ordinary Differential Equations II. Stiff and Differential – Algebraic Problems, Springer, 1996. [8013](#)

Ide, K., Courtier, P., Ghil, M., and Lorenc, A.: Unified notation for data assimilation: Operational sequential and variational, *J. Meteorol. Soc. Jpn*, 181–189, 1997.

Kalnay, E.: Atmospheric modeling, data assimilation and predictability, Cambridge University Press, UK, 2003. [8013](#)

Lahoz, W. A., Errera, Q., Swinbank, R., and Fonteyn, D.: Data assimilation of stratospheric constituents: a review, *Atm. Chem. Phys.*, 7, 5745–5773, 2007. [8011](#)

Lefèvre, F., Figarol, F., Carslaw, K. S., and Peter, T.: The 1997 Arctic ozone depletion quantified from three-dimensional model simulations, *Geophys. Res. Lett.*, 25, 2425–2428, 1998. [8026](#)

Lin, S.-J. and Rood, R. B.: Multidimensional flux–form semi–Lagrangian transport schemes, *Mon. Weather Rev.*, 124, 2046–2070, 1996. [8013](#)

López-Puertas, M., Funke, B., Gil-López, S., von Clarmann, T., Stiller, G. P., Höpfner, M., Kellmann, S., Fischer, H., and Jackman, C. H.: Observation of NO_x enhancement and ozone depletion in the Northern and Southern Hemispheres after the October–November 2003 solar proton events, *J. Geophys. Res.*, 110, A09S43, doi:doi:10.1029/2005JA011050, 2005. [8028](#)

Lucke, R. L., Korwan, D. R., Bevilacqua, R. M., Hornstein, J. S., Shettle, E. P., Chen, D. T., Daehler, M., Lumpe, J. D., Fromm, M. D., Debrestian, D., Neff, B., Squire, M., König-Langlo, G., and Davies, J.: The Polar Ozone and Aerosol Measurement (POAM) III instrument and early validation results, *J. Geophys. Res.*, 104, 18 785–18 800, doi:10.1029/1999JD900235, 1999. [8018](#)

Lumpe, J. D., Bevilacqua, R. M., Hoppel, K. W., and Randall, C. E.: POAM III retrieval algorithm and error analysis, *J. Geophys. Res.*, 107, p. 4575, doi:10.1029/2002JD002137, 2002. [8018](#), [8019](#)

Marchand, M., Bekki, S., Hauchecorne, A., and Bertaux, J.: Validation of the self-consistency of GOMOS NO₃, NO₂ and O₃ data using chemical data assimilation, *Geophys. Res. Lett.*, 31, L10107, doi:10.1029/2004GL019631, 2004. [8011](#)

Newman, P. A. and Nash, E. R.: The Unusual Southern Hemisphere Stratosphere Winter of 2002, *J. Atmos. Sci.*, 62, 614–628, 2005. [8026](#)

**4D-Var Assimilation
of MIPAS**

Q. Errera et al.

Title Page

Abstract

Introduction

Conclusions

References

Tables

Figures

◀

▶

◀

▶

Back

Close

Full Screen / Esc

Printer-friendly Version

Interactive Discussion



- Randall, C. E., Lumpe, J. D., Bevilacqua, R. M., Hoppel, K. W., Shettle, E. P., Rusch, D. W., Gordley, L. L., Kreher, K., Pfeilsticker, K., Boesch, H., Toon, G., Goutail, F., and Pommereau, J.-P.: Validation of POAM III NO₂ measurements, *J. Geophys. Res.*, 107, p. 4432, doi:10.1029/2001JD001520, 2002. [8019](#)
- 5 Randall, C. E., Rusch, D. W., Bevilacqua, R. M., Hoppel, K. W., Lumpe, J. D., Shettle, E., Thompson, E., Deaver, L., Zawodny, J., Kyrö, E., Johnson, B., Kelder, H., Dorokhov, V. M., König-Langlo, G., and Gil, M.: Validation of POAM III ozone: Comparisons with ozonesonde and satellite data, *J. Geophys. Res.*, 108, p. 4367, doi:10.1029/2002JD002944, 2003. [8019](#), [8024](#)
- 10 Randall, C. E., Harvey, V. L., Singleton, C. S., Bailey, S. M., Bernath, P. F., Codrescu, M., Nakajima, H., and Russell III, J. M.: Energetic particle precipitation effects on the Southern Hemisphere stratosphere in 1992–2005, *J. Geophys. Res.*, 112, p. 8308, doi: 10.1029/2006JD007696, 2007. [8019](#), [8028](#)
- Raspollini, P., Belotti, C., Burgess, A., Carli, B., Carlotti, M., Ceccherini, S., Dinelli, B. M., Dudhia, A., Flaud, J.-M., Funke, B., Hpfner, M., Lpez-Puertas, M., Payne, V., Piccolo, C., Remedios, J. J., Ridolfi, M., and Spang, R.: MIPAS level 2 operational analysis, *Atmos. Chem. Phys.*, 6, 5605–5630, 2006, <http://www.atmos-chem-phys.net/6/5605/2006/>. [8020](#)
- 15 Russell III, J. M., Gordley, L. L., Park, J. H., Drayson, S. R., Hesketh, D. H., Cicerone, R. J., Tuck, A. F., Frederick, J. E., Harries, J. E., and Crutzen, P. J.: The Halogen Occultation Experiment, *J. Geophys. Res.*, 10777–10797, 1993. [8017](#)
- Sander, S. P., Friedl, R. R., Golden, D. M., Kurylo, M. J., Huie, R. E., Orkin, V. L., Moortgat, G. K., Ravishankara, A. R., Kolb, C. E., and Molina, M. J.: Chemical Kinetics and Photochemical Data for Use in Atmospheric Studies. Evaluation Number 14: update of key reactions, Tech. rep., Jet Propulsion Laboratory, California Institute of Technology, Pasadena, California, 2003. [8013](#)
- 20 Sandu, A., Daescu, D., and Carmichael, G.: Direct and Adjoint Sensitivity Analysis of Chemical Kinetic Systems with KPP: I – Theory and Software Tools, *Atmos. Env.*, 37, 5083–5096, 2003. [8015](#)
- 30 Solomon, S. and Brasseur, G.: Polar Ozone, in: *The stratosphere and its role in the climate system*, edited by Brasseur, G. P., 253–259, Springer-Verlag, 1997. [8014](#)
- Strahan, S. E. and Polansky, B. C.: Meteorological implementation issues in chemistry and transport models, *Atmos. Chem. Phys.*, 6, 2895–2910, 2006,

<http://www.atmos-chem-phys.net/6/2895/2006/>. 8024

Talagrand, O. and Courtier, P.: Variational assimilation of meteorological observations with the adjoint vorticity equation, I, Theory, Q. J. Roy. Meteor. Soc., 23, 1311–1328, 1987. 8014

Vigouroux, C., de Mazière, M., Errera, Q., Chabrillat, S., Mahieu, E., Duchatelet, P., Wood, S., Smale, D., Mikuteit, S., Blumenstock, T., Hase, F., and Jones, N.: Comparisons between ground-based FTIR and MIPAS N₂O and HNO₃ profiles before and after assimilation in BAS-COE, Atmos. Chem. Phys., 7, 377–396, 2007,

<http://www.atmos-chem-phys.net/7/377/2007/>. 8011, 8013

Wargan, K., Stajner, I., Pawson, S., Rood, R. B., and Tan, W.-W.: Assimilation of ozone data from the Michelson Interferometer for Passive Atmospheric Sounding, Q. J. Roy. Meteor. Soc., 131, 2713–2734, 2005. 8011

Wetzel, G., Bracher, A., Funke, B., Goutail, F., Hendrick, F., Lambert, J.-C., Mikuteit, S., Piccolo, C., Pirre, M., Bazureau, A., Belotti, C., Blumenstock, T., de Mazière, M., Fischer, H., Huret, N., Ionov, D., López-Puertas, M., Maucher, G., Oelhaf, H., Pommereau, J.-P., Ruhnke, R., Sinnhuber, M., Stiller, G., Van Roozendael, M., and Zhang, G.: Validation of MIPAS-ENVISAT NO₂ operational data, Atm. Chem. Phys., 7, 3261–3284, 2007. 8017, 8033

**4D-Var Assimilation
of MIPAS**

Q. Errera et al.

Title Page

Abstract

Introduction

Conclusions

References

Tables

Figures

◀

▶

◀

▶

Back

Close

Full Screen / Esc

Printer-friendly Version

Interactive Discussion



4D-Var Assimilation of MIPAS

Q. Errera et al.

Table 1. Estimated uncertainties, including their error bars, of BASCOE ozone analyses based on intercomparison against HALOE and POAM-III. A positive bias indicates that BASCOE overestimates the HALOE and POAM-III data. If not specified, the units are in percent.

Altitude	Poles ^a	Mid Latitudes ^b	Tropics ^c	2003 Ozone hole ^d
0.5 hPa	−15±15	−7±10	−10±7	–
10 hPa	+3±7	+3±5	+2±5	–
70 hPa	+11±12	+10±13	+4±30	−3±3×10 ¹¹ molec/cm ³
Tropopause ^e	+30±30	+40±80	+45±70	–

^a poleward of 60° N and 60° S ;

^b 30° N–60° N and 60° S–30° S;

^c 30° S–30° N;

^d poleward of 60° S;

^e 100 hPa at the Tropics, 200 hPa at the Extra-Tropics.

Title Page

Abstract

Introduction

Conclusions

References

Tables

Figures

◀

▶

◀

▶

Back

Close

Full Screen / Esc

Printer-friendly Version

Interactive Discussion



4D-Var Assimilation of MIPAS

Q. Errera et al.

Table 2. Estimated uncertainties, including their error bars, of BASCOE NO_x analyses based on intercomparison against HALOE for periods when the stratosphere is unperturbed by EPP. This table is then not valid either during the SH 2003 winter or during the Halloween 2003 SPE. If not specified, the units are in percent.

Altitude	Poles ^a	Mid Latitudes ^b	Tropics ^c
1 hPa	+20±25	−8±20	+5±16
5 hPa	−5±8	−2±12	+0±10
30 hPa	+0.4±0.8 ppbv	+0.8±0.6 ppbv	+0.4±0.4 ppbv

^a poleward of 60° N and 60° S ;

^b 30° N–60° N and 60° S–30° S;

^c 30° S–30° N.

Title Page

Abstract

Introduction

Conclusions

References

Tables

Figures

◀

▶

◀

▶

Back

Close

Full Screen / Esc

Printer-friendly Version

Interactive Discussion



4D-Var Assimilation
of MIPAS

Q. Errera et al.

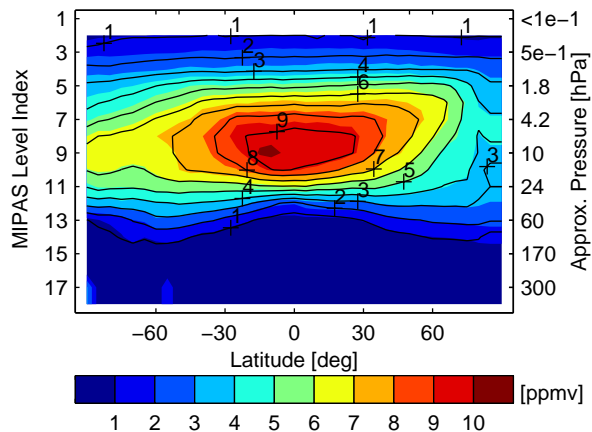


Fig. 1. Zonal mean of O_3 (ppmv) from MIPAS (isocontours) and BASCOE (isolines) on 6 October 2003 and averaged on a 5° latitude grid. The left-hand side vertical axis is the MIPAS vertical level index (1 highest, 17 lowest).

[Title Page](#)[Abstract](#)[Introduction](#)[Conclusions](#)[References](#)[Tables](#)[Figures](#)[I◀](#)[▶I](#)[◀](#)[▶](#)[Back](#)[Close](#)[Full Screen / Esc](#)[Printer-friendly Version](#)[Interactive Discussion](#)

4D-Var Assimilation
of MIPAS

Q. Errera et al.

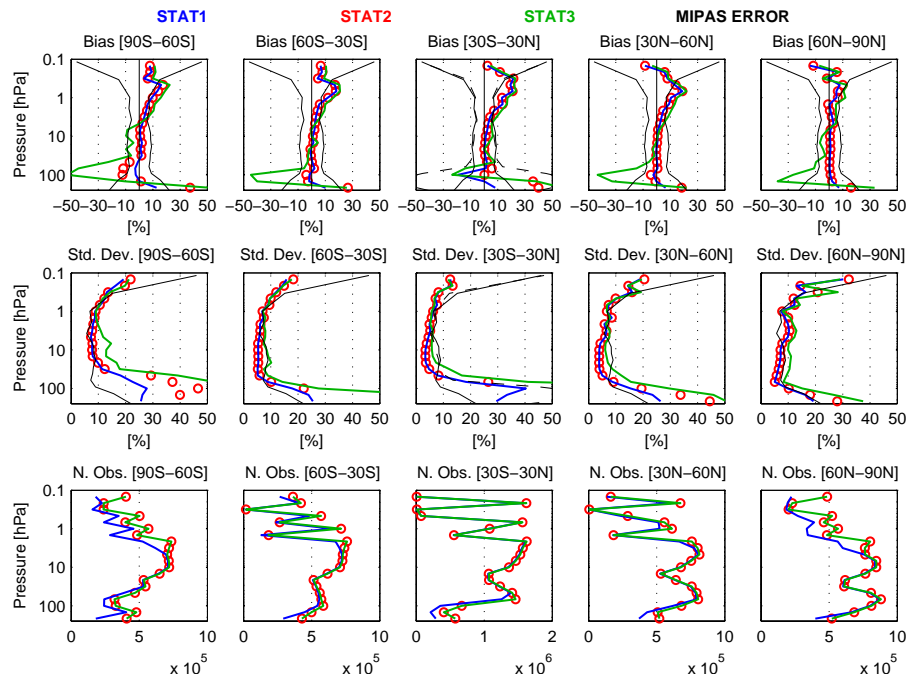


Fig. 2. Comparison between MIPAS O_3 and BASCOE for the September–October 2003 period: (1) assimilated MIPAS data vs BASCOE (stat1 – see text, solid blue), (2) all MIPAS data (including those rejected by QC filter) vs BASCOE (stat2 – see text, red circles) and (3) all MIPAS data and BASCOE control run (stat3 – see text, solid green). Upper row shows the mean differences between MIPAS and BASCOE, or the bias calculated as $\text{Mean}(\text{MIPAS}-\text{BASCOE})/\text{Mean}(\text{MIPAS})$. The middle row shows the standard deviation of the mean differences and the lower row shows the number of observations used per latitude band and pressure level. The solid black line in the bias and standard deviation plots is the MIPAS nighttime error (daytime error is similar) and the dashed black line in the bias and standard deviation plots in the region $[30^\circ \text{S}–30^\circ \text{N}]$ is the MIPAS daytime error at the Equator. See Sect. 3.4 for details of the intercomparison method.

Title Page

Abstract

Introduction

Conclusions

References

Tables

Figures

◀

▶

◀

▶

Back

Close

Full Screen / Esc

Printer-friendly Version

Interactive Discussion



4D-Var Assimilation
of MIPAS

Q. Errera et al.

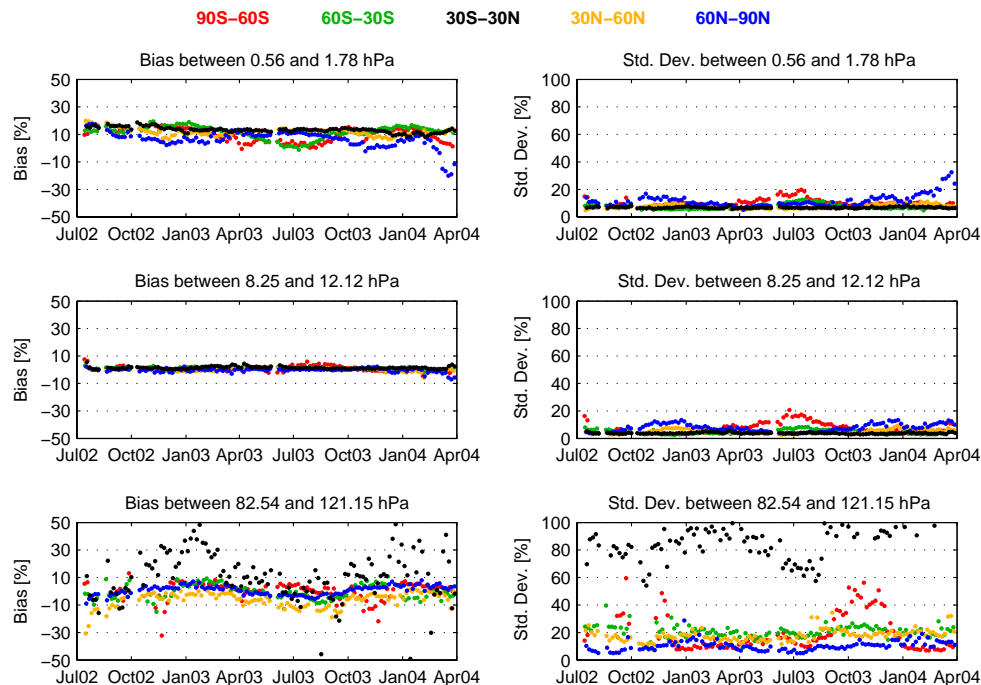


Fig. 3. Time series of bias (left column) and standard deviation (right column) between all MIPAS data and BASCOE (stat2 – see text) for the five latitude bands (see text), three pressure layers (top: 0.56–1.78 hPa; middle: 8.25–12.12 hPa; bottom: 82.54–121.15 hPa) and the whole assimilation period July 2002–March 2004. Each dot represents a five day average.

[Title Page](#)
[Abstract](#)
[Introduction](#)
[Conclusions](#)
[References](#)
[Tables](#)
[Figures](#)
[◀](#)
[▶](#)
[◀](#)
[▶](#)
[Back](#)
[Close](#)
[Full Screen / Esc](#)
[Printer-friendly Version](#)
[Interactive Discussion](#)


4D-Var Assimilation
of MIPAS

Q. Errera et al.

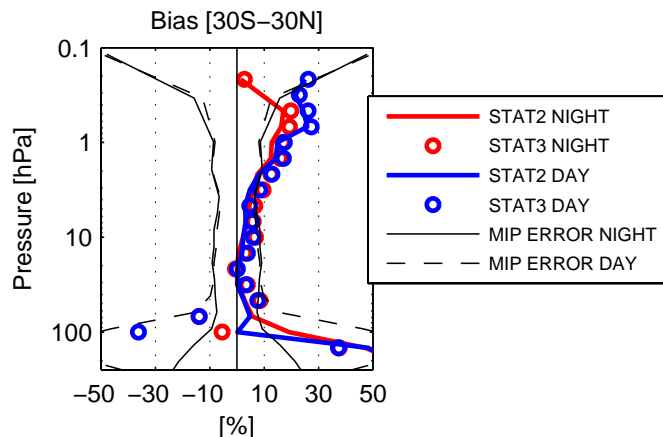


Fig. 4. Comparison between MIPAS O₃ and BASCOE (stat2 – see text) and between MIPAS O₃ and the control run (stat3 – see text) considering separately daytime and nighttime MIPAS observations, for September–October 2003. The full dark and dashed lines represent the MIPAS total error for nighttime and daytime observations, respectively.

[Title Page](#)[Abstract](#)[Introduction](#)[Conclusions](#)[References](#)[Tables](#)[Figures](#)[I◀](#)[▶I](#)[◀](#)[▶](#)[Back](#)[Close](#)[Full Screen / Esc](#)[Printer-friendly Version](#)[Interactive Discussion](#)

4D-Var Assimilation
of MIPAS

Q. Errera et al.

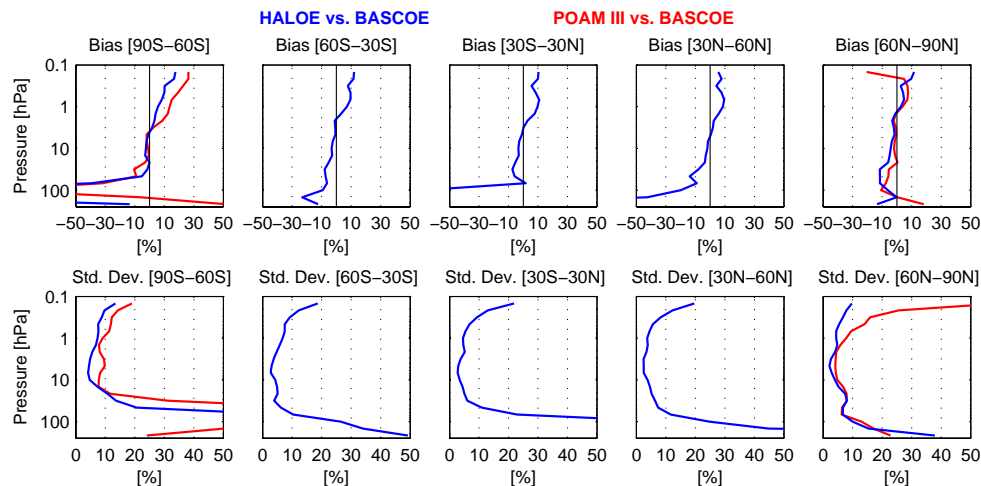


Fig. 5. Comparison between BASCOE O_3 analyses and independent observations HALOE and POAM-III for the period September–October 2003. Blue: HALOE vs. BASCOE, red: POAM-III vs. BASCOE. A positive value for the bias indicates that BASCOE underestimates the HALOE and POAM-III data.

Title Page

Abstract

Introduction

Conclusions

References

Tables

Figures

I◀

▶I

◀

▶

Back

Close

Full Screen / Esc

Printer-friendly Version

Interactive Discussion



4D-Var Assimilation
of MIPAS

Q. Errera et al.

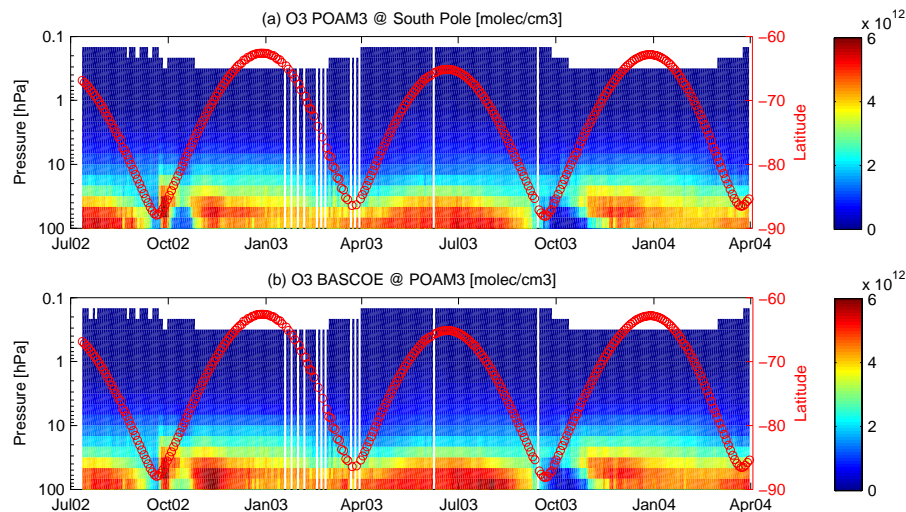


Fig. 6. Time series of POAM-III averaged over two days for ozone at South Pole (top) and BASCOE ozone analyses at POAM-III (bottom), in molec/cm^3 .

[Title Page](#)[Abstract](#)[Introduction](#)[Conclusions](#)[References](#)[Tables](#)[Figures](#)[◀](#)[▶](#)[◀](#)[▶](#)[Back](#)[Close](#)[Full Screen / Esc](#)[Printer-friendly Version](#)[Interactive Discussion](#)

4D-Var Assimilation
of MIPAS

Q. Errera et al.

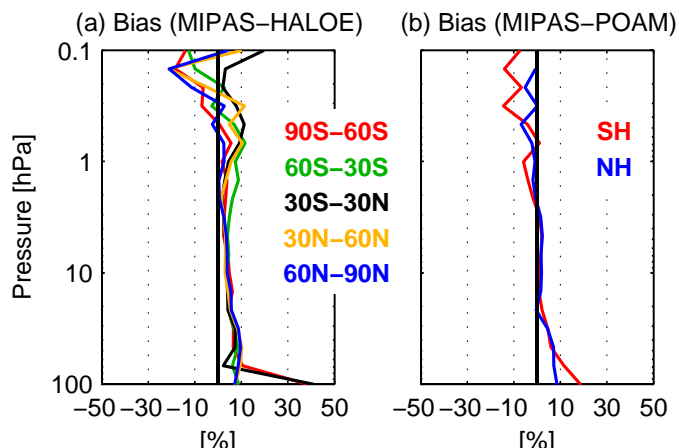


Fig. 7. Ozone mean differences between MIPAS and HALOE (left) and MIPAS and POAM-III (right) using the BASCOE analyses as a transfer standard. The considered period is the year 2003. Each line correspond to a different latitude band. Positive values indicate that MIPAS overestimates the HALOE and POAM-III data.

[Title Page](#)[Abstract](#)[Introduction](#)[Conclusions](#)[References](#)[Tables](#)[Figures](#)[I◀](#)[▶I](#)[◀](#)[▶](#)[Back](#)[Close](#)[Full Screen / Esc](#)[Printer-friendly Version](#)[Interactive Discussion](#)

4D-Var Assimilation
of MIPAS

Q. Errera et al.

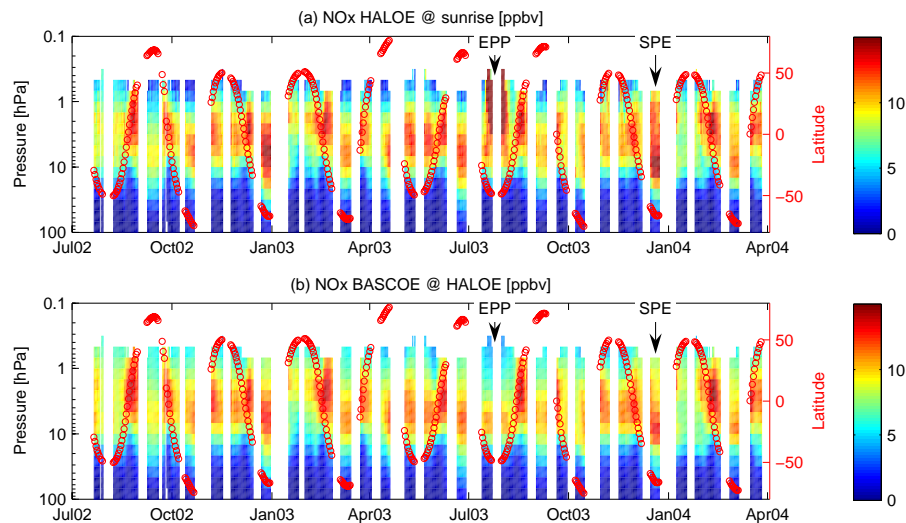


Fig. 8. Time series of HALOE sunrise daily averaged NO_x (top) and BASCOE monitored NO_x (bottom) in ppbv.

[Title Page](#)[Abstract](#)[Introduction](#)[Conclusions](#)[References](#)[Tables](#)[Figures](#)[I◀](#)[▶I](#)[◀](#)[▶](#)[Back](#)[Close](#)[Full Screen / Esc](#)[Printer-friendly Version](#)[Interactive Discussion](#)

4D-Var Assimilation
of MIPAS

Q. Errera et al.

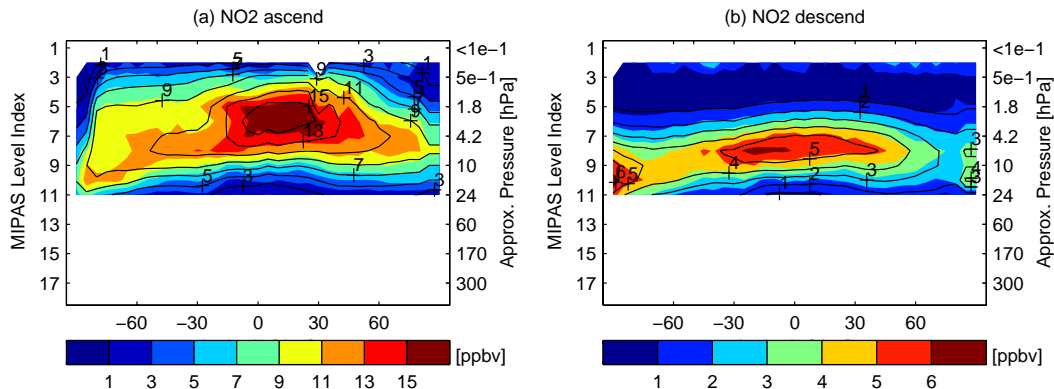


Fig. 9. Zonal mean of NO₂ (ppbv) from MIPAS (isocontours) and BASCOE (isolines) for the ascending phase (i.e., nighttime measurements, Fig. 9a) and the descending phase (i.e., daytime measurements, Fig. 9b) of the satellite. The left-hand side vertical axis is the MIPAS vertical level index (1 highest, 17 lowest). Data is for 6 October 2003, and are averaged on a 5° latitude grid.

Title Page

Abstract

Introduction

Conclusions

References

Tables

Figures

◀

▶

◀

▶

Back

Close

Full Screen / Esc

Printer-friendly Version

Interactive Discussion



4D-Var Assimilation
of MIPAS

Q. Errera et al.

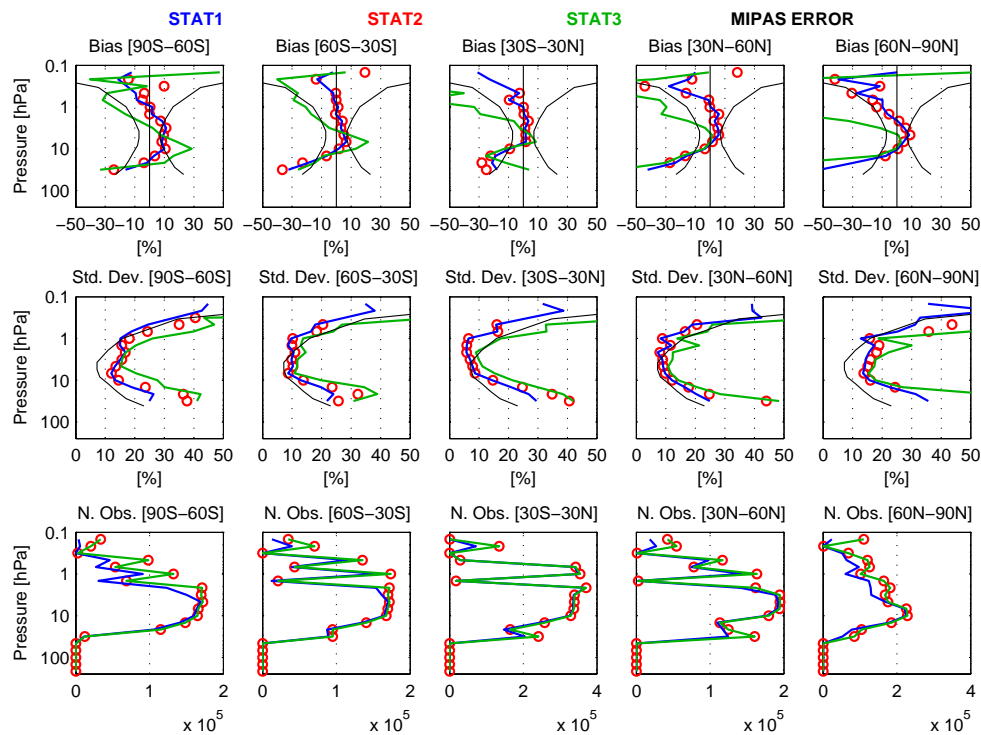


Fig. 10. As Fig. 2, but for nighttime MIPAS NO_2 data and between 1 and 24 October 2003.

Title Page

Abstract

Introduction

Conclusions

References

Tables

Figures

◀

▶

◀

▶

Back

Close

Full Screen / Esc

Printer-friendly Version

Interactive Discussion



4D-Var Assimilation
of MIPAS

Q. Errera et al.

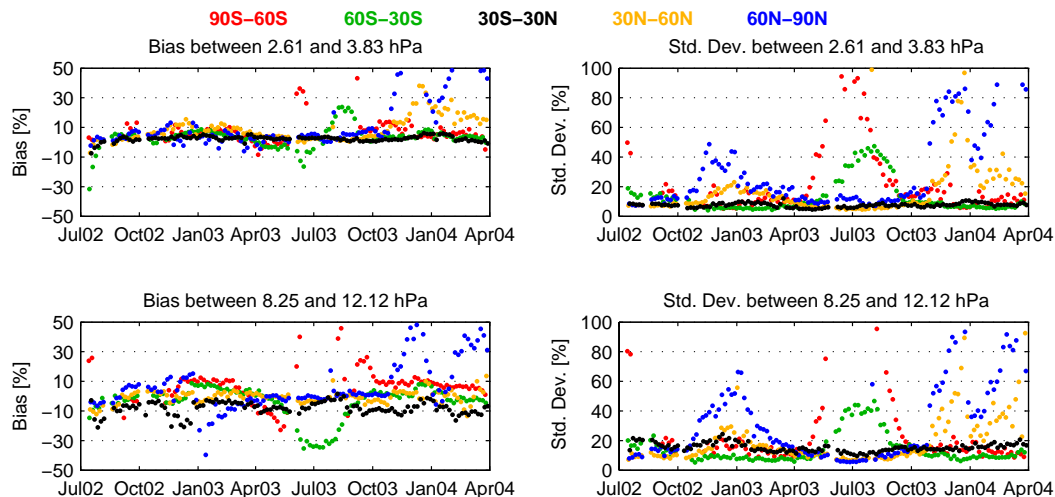


Fig. 11. As Fig. 3, but for nighttime MIPAS NO_2 data. Each dot represents a five day average.

[Title Page](#)[Abstract](#)[Introduction](#)[Conclusions](#)[References](#)[Tables](#)[Figures](#)[◀](#)[▶](#)[◀](#)[▶](#)[Back](#)[Close](#)[Full Screen / Esc](#)[Printer-friendly Version](#)[Interactive Discussion](#)

4D-Var Assimilation
of MIPAS

Q. Errera et al.

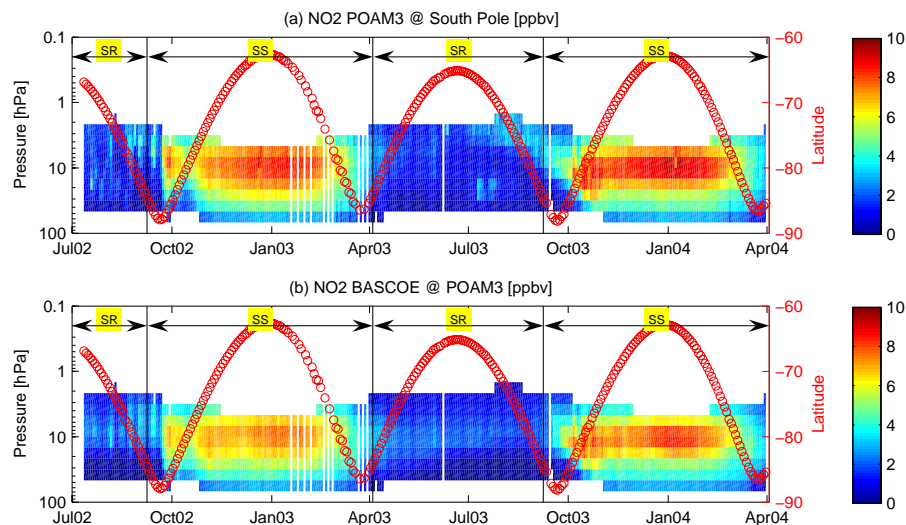


Fig. 12. Time series of POAM-III NO_2 averaged over two days for NO_2 at South Pole (top) and BASCOE monitoring NO_2 analyses (bottom) in ppbv. The horizontal arrows identify periods of sunrise (SR) and sunset (SS) observations from POAM-III.

[Title Page](#)[Abstract](#)[Introduction](#)[Conclusions](#)[References](#)[Tables](#)[Figures](#)[I◀](#)[▶I](#)[◀](#)[▶](#)[Back](#)[Close](#)[Full Screen / Esc](#)[Printer-friendly Version](#)[Interactive Discussion](#)

4D-Var Assimilation
of MIPAS

Q. Errera et al.

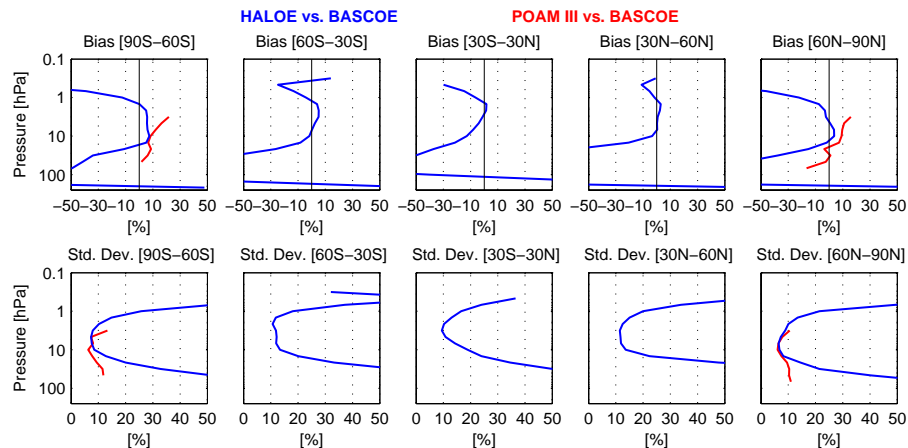


Fig. 13. Bias and standard deviation between HALOE NO_x and BASCOE NO_x (blue), and POAM-III NO_2 and BASCOE NO_2 (red). Comparison against HALOE is done for a period where stratospheric NO_x was not perturbed by EPP production (see text for details). Comparisons against POAM-III are done at local sunset, between November 2003 and February 2004 in SH, and between May and August 2003 in NH. Positive values of the bias indicate that BASCOE underestimates the HALOE and POAM-III data.

Title Page

Abstract

Introduction

Conclusions

References

Tables

Figures

I◀

▶I

◀

▶

Back

Close

Full Screen / Esc

Printer-friendly Version

Interactive Discussion



4D-Var Assimilation
of MIPAS

Q. Errera et al.

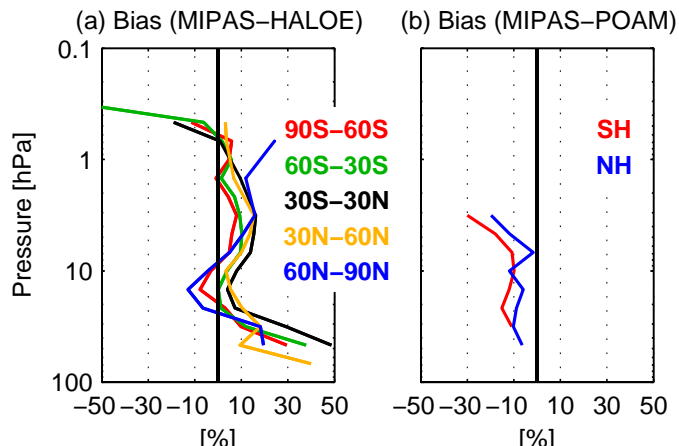


Fig. 14. Nitrogen dioxide mean differences between MIPAS and HALOE (left) and MIPAS and POAM-III (right) using the BASCOE analyses as a transfer standard. The periods considered are identical as in Fig. 13. Each line correspond to a different latitude band. Positive values indicate that MIPAS overestimates the HALOE and POAM-III data.

[Title Page](#)[Abstract](#)[Introduction](#)[Conclusions](#)[References](#)[Tables](#)[Figures](#)[I◀](#)[▶I](#)[◀](#)[▶](#)[Back](#)[Close](#)[Full Screen / Esc](#)[Printer-friendly Version](#)[Interactive Discussion](#)