

# Comparison of microwave satellite humidity data and radiosonde profiles: a survey of European stations

V. O. John and S. A. Buehler

Institute of Environmental Physics, University of Bremen, Bremen, Germany

Received: 15 October 2004 – Accepted: 27 January 2005 – Published: 15 March 2005

Correspondence to: V. O. John (vojoh@uni-bremen.de)

© 2005 Author(s). This work is licensed under a Creative Commons License.

1529

## Abstract

A method to compare upper tropospheric humidity (UTH) from satellite and radiosonde data has been applied to the European radiosonde stations. The method uses microwave data as a benchmark for monitoring the performance of the stations. The present study utilizes three years (2002–2003) of data from channel 18 (183.31±1.00 GHz) of the Advanced Microwave Sounding Unit-B (AMSU-B) aboard the satellites NOAA-15 and NOAA-16. The comparison is done in the radiance space, the radiosonde data were transformed to the channel radiances using a radiative transfer model. The comparison results confirm that there is a dry bias in the UTH measured by the radiosondes. This bias is highly variable among the stations and the years. This variability is attributed mainly to the differences in the radiosonde humidity measurements. The results also hint at a systematic difference between the two satellites, the channel 18 brightness temperature of NOAA-15 is on average 1.0 K higher than that of NOAA-16. The difference of 1 K corresponds to approximately 7% relative error in UTH which is significant for climatological applications.

## 1 Introduction

Radiosonde measurements are important for a large variety of meteorological and climate applications. For example, [Peixoto and Oort \(1996\)](#) have used them for making global climatologies of water vapor and [Seidel et al. \(2004\)](#) and [Christy and Norris \(2004\)](#) have used them for temperature trend analysis. Another important use of radiosonde data is for initialize or assimilate into numerical weather prediction models ([Lorenc et al., 1996](#)). The radiosonde data have also been used for detecting super saturation ([Spichtinger et al., 2003](#)), identifying and removing biases from data sets ([Lanzante and Gahrs, 2000](#)), and deriving regression parameters ([Spencer and Braswell, 1997](#)). The reanalysis procedure also uses radiosonde data ([Onogi, 2000](#); [Kistler et al., 2001](#); [Andrae et al., 2004](#)). Another most important application of the data

1530

is their use as initial guess for profile retrievals from satellite data (Chaboureau et al., 1998) and validating satellite retrieval algorithms (Fetzer et al., 2003).

In spite of the fact that there are several studies which question the quality of radiosonde data (Elliot and Gaffen, 1991; SPARC, 2000), it is inevitable to use radiosonde data to validate satellite retrievals due to unavailability of other better data sets. Recently, there have been several studies which describe the validation of satellite derived upper tropospheric water vapor using radiosonde data, for example, Sohn et al. (2001); Jimenez et al. (2004); Buehler and John (2005). But care has been taken in all cases to use quality controlled radiosonde data. Therefore it is important to monitor and correct radiosonde data. This motivated us to develop a satellite based tool for monitoring global radiosonde stations. The approach follows that of Buehler et al. (2004) and uses microwave data from polar orbiting satellites. As a pilot study we selected the stations from countries which participate in COST Action 723 (COST is an intergovernmental framework for European Co-operation in the field of Scientific and Technical Research, the details can be seen at <http://www.cost723.org>). There are 17 countries participating in COST Action 723. Their names, in alphabetical order, are Belgium, Bulgaria, Cyprus, Czech Republic, Denmark, Finland, France, Germany, Greece, Italy, Netherlands, Norway, Poland, Spain, Sweden, Switzerland, and the United Kingdom.

The global radiosonde network consists of about 900 radiosonde stations, and about two third make observations twice daily. These stations use different types of humidity sensors, which can be mainly classified into three categories: capacitive hygristor, carbon hygristor, and Goldbeater's skin hygrometer. The stations selected for this study launch only Vaisala radiosondes which use capacitive hygristor. Vaisala radiosondes use thin film capacitors which have an electrode treated with a polymer film whose dielectric constant changes with ambient water vapor pressure. There are mainly four versions of Vaisala radiosondes, RS80A, RS80H, RS90, and RS92. The RS80A has a time constant of 100 s at  $-50^{\circ}\text{C}$  and 400 s at  $-70^{\circ}\text{C}$ , thus it will respond to 63% of a step change in humidity over a vertical distance of 0.5 and 2 km, respectively (SPARC, 2000). The RS80H sensor has a smaller size and responds more quickly than RS80A.

1531

The RS90 type radiosondes have an improved humidity sensor, which is designed to solve the problem of sensor icing in clouds. The RS92 type radiosondes have an improved reconditioning procedure which removes all contaminants from the humidity sensor surface.

Even though the specified absolute accuracy of the Vaisala humidity sensors is 2% *RH*, there exists a significant dry bias in the humidity measurements (Soden and Lanzante, 1996; Soden et al., 2004; Buehler et al., 2004; Turner et al., 2003; Nakamura et al., 2004). The error sources of this dry bias and a number of correction methods are documented in the literature (Turner et al., 2003; Wang et al., 2002; Leiterer et al., 1997; Roy et al., 2004; Soden et al., 2004). Soden et al. (2004) examined the effect of some of these corrections and found that there still remains a significant dry bias after the corrections. Buehler et al. (2004) also arrived at a similar conclusion about the corrected humidity data.

Another important point is that these corrections are applied mostly to the data from special campaigns and not to the data from the global radiosonde network. There exists severe discontinuities in these data due to instrument and launch procedure changes. The monitoring tool developed in this study allows a continuous observation of the performance of the stations. All stations taken together can also be used to investigate systematic differences between microwave sensors on different satellites.

The structure of this article is as follows: Sect. 2 presents the satellite and radiosonde data, focusing on the properties of the radiosonde data that are relevant for this study. Section 3 briefly presents the methodology. Section 4 discusses the results for different stations for different time periods and satellites, and Sect. 5 presents the conclusions.

## 2 Data

This section describes the AMSU instrument, the radiosonde data, and basic information on the radiosonde stations such as geographic location and the radiosonde type.

1532

## 2.1 AMSU-B Data

AMSU-B is a cross-track scanning microwave sensor with channels at 89.0, 150.0, 183.31±1.00, 183.31±3.00, and 183.31±7.00 GHz (Saunders et al., 1995). These channels are referred to as Channel 16 to 20 of the overall AMSU instrument. The instrument has a swath width of approximately 2300 km, which is sampled at 90 scan positions. The satellite viewing angle for the innermost scan positions is ±0.55° from nadir, for the outermost scan positions it is ±48.95° from nadir. This corresponds to incidence angles of ±0.62° and ±58.5° from nadir at the surface, respectively. The footprint size is 20×16 km<sup>2</sup> for the innermost scan positions, but increases to 64×27 km<sup>2</sup> for the outermost positions.

AMSU data (level 1b) for this study was obtained from the Comprehensive Large Array-data Stewardship System (CLASS) of the US National Oceanic and Atmospheric Administration (NOAA). We used the ATOVS and AVHRR Processing Package (AAPP) to convert the data from level 1b to level 1c.

Channels 18 is of interest to this study as the channel vertically samples the atmosphere in the upper troposphere. The sensitive altitude of this channel is shown for different atmospheres in Buehler and John (2005).

## 2.2 Radiosonde data

Radiosonde data used in this study are obtained from the British Atmospheric Data Centre (BADC). The radiosonde data archive at BADC consists of global operational radiosonde data. The humidity values are stored in the form of dew point temperatures. For the study, the dew point temperature was converted to actual water vapor pressure using the Sonntag formula (Sonntag, 1994).

Table 1 gives the short name, longitude, latitude, radiosonde type, location, and country of each station. The locations of the stations are shown in Fig. 1. As AMSU-B channels are sensitive up to 100 hPa, the launches which reach at least up to this pressure level are used for the comparison. In order to have enough matches, only

1533

those stations which have at least 10 launches per month are included in this study. It should be noted that some of the countries do not have any station satisfying the above condition. All the selected stations launch Vaisala RS80 or RS90 radiosondes instruments. Out of 40 stations, 15 launch RS90 sondes and 6 use AUTOSONDE facility. The AUTOSONDE (AU) system improves the availability and quality of the data by launching the sondes at a preset time, receiving the radiosonde signals automatically, processing the signal into meteorological messages, and transmitting the messages to the external network.

The BADC archive contains low resolution radiosonde data, i.e., the vertical data levels are only standard and significant pressure levels. The significant levels are added to ensure that a linear interpolation of the profile approximates the real profile. It was found that the properly interpolated low resolution data are sufficient to represent layer averaged quantities such as upper tropospheric humidity (UTH) and to simulate AMSU-B radiance which is sensitive to UTH (Buehler et al., 2004).

## 3 Methodology

This section briefly describes the methodology of the comparison. For more details, the reader is referred to Buehler et al. (2004), henceforth referred to as BKJ.

In this study, the comparison of humidity from satellite and radiosonde is done in radiance space. This means, the satellite radiances are not inverted to temperature and water vapor profiles to compare with the radiosonde profiles. Instead, satellite radiances are simulated for the radiosonde profiles. This type of comparison has already been done using infrared satellite data (Soden and Lanzante, 1996; Soden et al., 2004). A comparison of this type using microwave radiances was first done by BKJ, and this study is based on that work. One advantage of this kind of comparison is that it is not necessary to do the inversion of satellite radiances to atmospheric profiles, which is a non-trivial problem. Simulating radiances from radiosonde profiles using a radiative transfer (RT) model is rather straight forward and introduces fewer uncertainties.

1534

The RT model used in this study is ARTS (Buehler et al., 2005). ARTS is a line-by-line model which has been compared and validated against other models (John et al., 2002; Melsheimer et al., 2005). The setup of the radiative transfer calculations is similar to that in BKJ.

5 It is difficult to match a radiosonde profile with a single AMSU pixel, because the sonde drifts considerably during its ascent. A target area was defined around each radiosonde station, which is a circle of 50 km radius. The circle normally contains 10–30 pixels depending on the satellite viewing angle. The average of the pixels in this circle is then compared to the radiance simulated using the corresponding radiosonde data. Simulations are also done for each pixel in the target area taking into account the satellite viewing angle, and then averaged to get the representative radiance for the radiosonde data.

Another issue in the comparison is the difference between radiosonde launch time and the satellite over pass time. Ideally, the satellite and the radiosonde should sample the same air parcel for a one to one comparison. This can be achieved only if the time difference is small, but this can be often as large as 3 h. Moreover, the BADC data files do not contain the exact time of radiosonde launch. But the practice is that the sondes are launched one hour before the synoptic hour so that they reach 100 hPa by the synoptic hour. Therefore we take half an hour before the synoptic hour as the mean launch time and the time difference ( $\Delta t$ ) is the difference between the mean launch time and the satellite overpass time.

In order to calculate the displacement of the air parcel during this time difference, the average wind vector is computed between 700–300 hPa, the sensitive altitude for the AMSU-B channels used in this study, and then multiplied with  $\Delta t$ . If the displacement is larger than 50 km the data are discarded.

An error model was developed as follows:

$$\sigma(i) = \sqrt{C_0^2 + \sigma_{50\text{ km}}^2(i)} \quad (1)$$

where  $\sigma_{50\text{ km}}(i)$  is the standard deviation of the pixels inside the target area which char-

1535

acterizes radiometric noise AMSU and sampling error due to atmospheric inhomogeneity. The value  $C_0$  is estimated as 0.5K which approximates the other error sources in the comparison such as random error in the radiosonde measurements.

This error model is considered while defining the statistical quantities to measure the agreement between radiosonde and satellite humidity. In BKJ the Bias,  $B$ , which is the mean of difference between measured minus modeled radiances ( $D$ ) was defined as

$$B = \frac{\sum \sigma(i)^{-2} D(i)}{\sum \sigma(i)^{-2}}, \quad (2)$$

and the uncertainty in the bias can be estimated from its standard deviation

$$\sigma_B = \sqrt{\frac{1}{\sum \sigma(i)^{-2}}}. \quad (3)$$

10 But in the present study  $B$  is calculated using a linear fit between the modeled and the measured brightness temperatures, taking into account the error model:

$$T_B^{\text{fit}} = a * (T_B^{\text{ARTS}} - 245) + (B + 245). \quad (4)$$

The value 245 K was found to be the mean brightness temperature for channel 18, when data from all stations were combined. Defining  $B$  like this reduces its dependence on different atmospheric states. The uncertainties of  $a$  and  $B$  are calculated as described in Press et al. (1992). In BKJ it was found that the fitted line has a non-unity slope value  $a$ , mostly between 0.8–1.0, depending on the channel, which was attributed mainly to more underestimation of humidity by radiosondes in drier atmospheres than in wetter atmospheres.

## 20 4 Results and discussion

This section describes the differences between different radiosonde stations for three years (2001–2003) and differences between satellites for the same time period.

1536

We make use of two quantities to check the quality of data from different stations. They are the bias ( $B$ ) and the slope ( $a$ ) as defined in Sect. 3. These two quantities are calculated considering the error model, hence the matches with large sampling errors are less weighted. The study focuses on AMSU-B channel 18 which is sensitive to the upper troposphere (approximately from 500 hPa to 200 hPa).

There exists a relation to translate the quantities  $a$  and  $B$  which are expressed in radiance units (K) to UTH:

$$\frac{\Delta UTH}{UTH} = const \times \Delta T, \quad (5)$$

which yields the relative error in relative humidity for a given absolute error in radiance (Buehler and John, 2005). The constant in the above equation is about  $-0.07$ , therefore a 1 K bias in radiance units is equivalent to a 7% relative error in upper tropospheric humidity. The negative value of the constant implies that a positive bias in the radiance is equivalent to a dry bias in the humidity and vice versa.

#### 4.1 Different stations

Figure 2 shows results of the comparison for channel 18 on NOAA-15. The NOAA-15 is a morning/evening satellite, therefore it collocates with 06:00 and 18:00 UTC radiosondes launched over Europe. Only about half of the selected radiosonde stations launch sondes at this time, mainly from Germany, Italy, and the UK.

One of the noticeable features is that the biases of the Italian stations (BR–UC) improve considerably for the years 2002 and 2003 compared to 2001. There is an improvement of about 2 K for BR and CE and about 1 K for the other stations. This may be due to an instrument change because a similar improvement in one of the UK stations was found as discussed later in this section. However, it is not advisable to use radiosonde data for 2001 from these stations for validating or tuning satellite algorithms.

All the available UK stations show a slight positive bias, an opposite behavior to the

1537

stations of other countries. A positive bias refers to a wet bias in the humidity measurements which is not common for Vaisala RS80/90 radiosondes. Moreover, the bias values are consistent through the years and the stations. But these stations show varying values of slope from 0.7 to 1.1, a low value in slope indicates that the underestimation of humidity by the sondes is more at drier conditions than at wetter conditions. Therefore a low value in slope together with a positive bias, as in case of ST in 2001, there is an overestimation of humidity at wetter conditions.

Two German stations GR and SC show a jump in bias between 2001 and 2002, the reason for which is not clear. The bias is  $-1$  K for 2001 and  $-2$  K for 2002. The station LI shows a systematic change in bias through the years, it is almost 0 K in 2001,  $-0.5$  K in 2002, and  $-1$  K in 2003. Another feature of German stations is that the bias shows maximum value in 2003.

Most of the stations show a consistent slope through the years, though the values are different between the stations. Exceptions are IO, SC, HI, NO, and ST.

Figure 3 shows the bias and slope of channel 18 on the NOAA-16 satellite. NOAA-16 is a mid-night/noon satellite which collocates with the 0000/1200 UTC radiosonde launch over Europe. Most of the selected stations launch sondes at this time.

The three very noticeable stations in this case are CE of Italy, MU of Spain, and HE of UK, which show a bias of about 4 K. In case of CE and HE this happens only in 2001, during the other years there is reasonable agreement with the other stations. HE shows a very different slope which is far away from unity. Other UK stations do not show any large biases.

Station PL shows a similar result as in the case of NOAA-15, that is, the 2001 bias is less than that of 2002 and 2003 biases, which is almost 0.6 K towards the colder side. But there is a shift in bias values between the satellites by about 1 K. This will be investigated in Sect. 4.2 to see whether this is due to the difference between the AMSU-B instruments on the two satellites.

The two Finnish stations, JO and SO, show consistent values for the bias in 2003. The values are consistent also over years for SO, but JO shows almost 1 K difference

1538

in bias values for 2001 and 2002. On an average, all the Finnish stations show very good performance in case of both the satellites.

Among the German stations, ES, LI, and SS have the least bias, about 1.0 K. ES and SS use autosondes while LI uses correction procedures as described in [Leiterer et al. \(1997\)](#). A general feature for all the German stations is that the bias is the smallest during 2001 and the largest during 2003. An exception to this is KU for which bias values for all the years is about -2.3 K.

The Italian stations show improvement in bias for 2002 and 2003 compared to 2001. The difference in bias is more than 1 K for most of the stations. This feature was observed for NOAA-15 also. One exception is SP whose 2001 bias is less than that of 2002 or 2003.

The Polish stations (LE-WR) show good agreement with AMSU data, biases are always less than -2 K. As in the case of the German stations, 2003 biases are the largest. For Spanish stations (LC-PM), for most cases 2001 has minimum bias and 2002 has maximum bias. The bias values are greater than about 2.0 K, which corresponds to 15% relative error in UTH, for all the stations. Therefore data from Spanish stations may not give good agreement in satellite validations. The Swedish stations (GL-SU) show comparatively better performance except for LK where 2002 and 2003 biases are about -2.5 K.

In the case of NOAA-16 also the UK stations show a near zero bias except for HE in 2001 and HI in 2002. In case of HE, the shift in bias is due to the instrument change. HE has switched from using Sippican Microsonde II to the Vaisala RS80 (and autosonde) in November 2001 (The details can be seen at: <http://www.metoffice.com/research/interproj/radiosonde/>). It should be noted that the error bar of HI for 2002 is larger compared to the other UK stations which indicates that the number of matches used for calculating the statistics is less. Therefore a higher bias in this case might be due to insufficient sample size.

The slope in the case of NOAA-16 is around 0.9 K/K for most of the stations, but there is a scatter for some of the stations. For example, the slope of some of the UK

1539

stations varies from 0.7 to 0.9 K/K. The case of HE was discussed before and is an exceptional case.

The reason for all these jumps and differences are unclear, nevertheless the features appear to be real. For example, there is no conceivable reason why the satellite instrument should be biased differently over the UK, or why the bias should jump for all stations in Italy. The lack of proper documentation of the instrument change or correction methods at each station makes it difficult to attribute reasons to the observed variability in the performance of the stations.

Figure 4 shows a scatter plot of the anomalies of the biases versus anomalies of channel 18 brightness temperature ( $T_B^{18}$ ) for all the stations and the years for NOAA 16. The anomalies are calculated from the global mean values of the quantities,  $T_B^{18} - \text{MEAN}_{\text{global}}$  and  $\text{BIAS}_{\text{MEAN}_{\text{global}}}$ , mean of all the stations for the whole time period. The values of these quantities are 245.55 K and -0.54 K for NOAA 15 and 245.30 K and -1.64 K for NOAA 16. One does not see any particular relation between the two anomalies. Similar results were found for NOAA 15 (not shown). This implies that the bias values are independent of the atmospheric conditions and are due to the differences in radiosonde measurements.

We went one step further to see whether the bias values are really independent of the atmospheric conditions at different stations by calculating the anomalies from the station means. Figure 5 shows the result of this and confirms that there is no explicit relationship between the two anomalies. This confirms that the bias values are independent of the atmospheric conditions.

#### 4.2 Different satellites

From Figs. 2 and 3 one can notice a systematic difference in bias values between the two satellites, the magnitude of the bias is larger for NOAA 16 than for NOAA 15. We selected 10 stations to further study the difference between the satellites. They are PL, KU, LI, SS, BR, CE, ML, PR, TB, and UC. These stations are selected be-

1540

cause they launch sondes 4 times a day, therefore have matches with both satellites. These stations have bias values for 2001, 2002, and 2003. The difference in bias,  $\Delta B (= B_{\text{NOAA15}} - B_{\text{NOAA16}})$ , between the satellites per year for each station was calculated. The mean of  $\Delta B$  is  $1.15 \pm 0.12$  K for 2001,  $0.93 \pm 0.14$  K for 2002, and  $0.77 \pm 0.09$  K for 2003. There is a decrease in  $\Delta B$  through the years. The mean of  $\Delta B$  for the whole time period is  $0.95 \pm 0.12$  K. The stability of  $\Delta B$  has been verified by putting the 10 stations into two groups and calculating separate mean values, which were found to be consistent with the values given above.

Although this method of comparing the satellites using radiosonde data from different stations has error sources from the radiosonde data itself, the  $\Delta B$  values give a hint that there can be a systematic bias between the two satellites. According to Eq. (5) the approximately 1 K bias observed corresponds to a 7% relative error in upper tropospheric humidity, which is significant for climatological applications. We plan to investigate this in more detail using data from simultaneous nadir overpasses of the satellites.

## 5 Conclusions

The method of comparing satellite and radiosonde humidities developed by BKJ was applied to all European radiosonde stations for which data were readily available. The method seems to be useful for monitoring upper tropospheric humidity data from radiosonde stations using microwave satellite data as reference. The stations used in this study launch Vaisala radiosondes which suffer a known dry bias. The results of this study also confirm this dry bias in the radiosonde data. Only the stations from the UK shows a near zero or slightly positive bias. There is a large variability in the dry bias among stations and years. There are believed to be several reasons for this such as radiosonde age, difference in calibration and launch procedures (Turner et al., 2003). A systematic difference in bias of about 1 K between NOAA-15 and NOAA-16 was also found, which strongly hints at a systematic difference in brightness temperature of the two satellites.

1541

*Acknowledgements.* We thank M. Kuvatov for contributions to the development of the methodology, the British Atmospheric Data Centre (BADC) for the global operational radiosonde data, LAUTLOS community for useful discussions, and Sreerekha T. R. for constructive comments on the manuscript. Special thanks to L. Neclos from the Comprehensive Large Array-data Stewardship System (CLASS) of the US National Oceanic and Atmospheric Administration (NOAA) for providing AMSU data. Thanks to the ARTS radiative transfer community, many of whom have indirectly contributed by implementing features to the ARTS model. This study was funded by the German Federal Ministry of Education and Research (BMBF), within the AFO2000 project UTH-MOS, grant 07ATC04. It is a contribution to COST Action 723 'Data Exploitation and Modeling for the Upper Troposphere and Lower Stratosphere'.

## References

- Andrae, U., Sokka, N., and Onogi, K.: The radiosonde temperature bias corrections used in ERA-40, Tech. rep., ECMWF, ERA-40 project report series no. 15, 34, 2004. [1530](#)
- Buehler, S. A. and John, V. O.: A Simple Method to Relate Microwave Radiances to Upper Tropospheric Humidity, *J. Geophys. Res.*, 110, D02110, doi:10.1029/2004JD005111, 2005. [1531](#), [1533](#), [1537](#)
- Buehler, S. A., Kuvatov, M., John, V. O., Leiterer, U., and Dier, H.: Comparison of Microwave Satellite Humidity Data and Radiosonde Profiles: A Case Study, *J. Geophys. Res.*, 109, D13103, doi:10.1029/2004JD004605, 2004. [1531](#), [1532](#), [1534](#)
- Buehler, S. A., Eriksson, P., Kuhn, T., von Engeln, A., and Verdes, C.: ARTS, the Atmospheric Radiative Transfer Simulator, *J. Quant. Spectrosc. Radiat. Transfer*, 91, 65–93, 2005. [1535](#)
- Chaboureaud, J.-P., Chedin, A., and Scott, N. A.: Remote sensing of the vertical distribution of atmospheric water vapor from the TOVS observations: Method and validation, *J. Geophys. Res.*, 103, 8743–8752, 1998. [1531](#)
- Christy, J. R. and Norris, W. B.: What may we conclude about global tropospheric temperature trends, *Geophys. Res. Lett.*, 31, L06211, doi:10.1029/2004GL019361, 2004. [1530](#)
- Elliot, W. P. and Gaffen, D. J.: On the Utility of Radiosonde Humidity Archives for Climate Studies, *Bull. Amer. Met. Soc.*, 72, 1507–1520, 1991. [1531](#)
- Fetzer, E., McMillin, L. M., Tobin, D., Aumann, H. H., Gunson, M. R., McMillan, W. W., Hagan, D. E., Hofstadter, M. D., Yoe, J., Whiteman, D. N., Barnes, J. E., Bennartz, R., Vomel, H.,

1542

- Walden, V., Newchurch, M., Minnet, P. J., Atlas, R., Schmidlin, F., Olsen, E. T., Goldberg, M. D., Zhou, S., Ding, H., Smith, W. L., and Revercomb, H.: AIRS/AMSU/HSB validation, *IEEE T. Geosci. Remote Sensing*, 41, 418–431, 2003. [1531](#)
- Jimenez, C., Eriksson, P., John, V. O., and Buehler, S. A.: A practical demonstration on AMSU retrieval precision for upper tropospheric humidity by a non-linear multi-channel regression method, *Atm. Chem. Phys. Discuss.*, 4, 7487–7511, 2004. [1531](#)
- John, V. O., Kuvatov, M., and Buehler, S. A.: ARTS – A New Radiative Transfer Model for AMSU, in: Twelfth International TOVS Study Conference (ITSC – XII), Lorne, Australia, 2002. [1535](#)
- Kistler, R., Kalnay, E., Collins, W., Saha, S., White, G., Woollen, J., Chelliah, M., Ebisuzaki, W., Kanamitsu, M., Kousky, V., den Dool, H. V., Jenne, R., and Fiorino, M.: The NCEP-NCAR 50 year reanalysis: monthly means CD-ROM and documentation, *BAMS*, 82, 247–268, 2001. [1530](#)
- Lanzante, J. R. and Gahrs, G. E.: The “clear-sky bias” of TOVS upper-tropospheric humidity, *J. Clim.*, 13, 4034–4041, 2000. [1530](#)
- Leiterer, U., Dier, H., and Naebert, T.: Improvements in Radiosonde Humidity Profiles Using RS80/RS90 Radiosondes of Vaisala, *Beitr. Phys. Atm.*, 70, 319–336, 1997. [1532](#), [1539](#)
- Lorenc, A. C., Barker, D., Bell, R. S., Macpherson, B., and Maycock, A. J.: On the use of radiosonde humidity observations in midlatitude NWP, *Meteorology and Atmospheric Physics*, 60, 3–17, 1996. [1530](#)
- Melsheimer, C., Verdes, C., Buehler, S. A., Emde, C., Eriksson, P., Feist, D. G., Ichizawa, S., John, V. O., Kasai, Y., Kopp, G., Koulev, N., Kuhn, T., Lemke, O., Ochiai, S., Schreier, F., Sreerexha, T. R., Suzuki, M., Takahashi, C., Tsujimaru, S., and Urban, J.: Intercomparison of General Purpose Clear Sky Atmospheric Radiative Transfer Models for the Millimeter/Submillimeter Spectral Range, *Radio Sci.*, in press, 2005. [1535](#)
- Nakamura, H., Seko, H., and Shoji, Y.: Dry biases of humidity measurements from the Vaisala RS80-A and Meisi RS2-91 radiosondes and from ground based GPS, *J. Meteor. Soc. Japan*, 82, 277–299, 2004. [1532](#)
- Onogi, K.: The long term performance of the radiosonde observing system to be used in ERA-40, Tech. rep., ECMWF, ERA-40 project report series no. 2, 2000. [1530](#)
- Peixoto, J. P. and Oort, A. H.: The climatology of relative humidity in the atmosphere, *J. Clim.*, 9, 3443–3463, 1996. [1530](#)
- Press, W. H., Teukolsky, S. A., Vetterling, W. T., and Flannery, B. P.: *Numerical Recipes in C*, Cambridge University Press, 2 edn., 1992. [1536](#)

1543

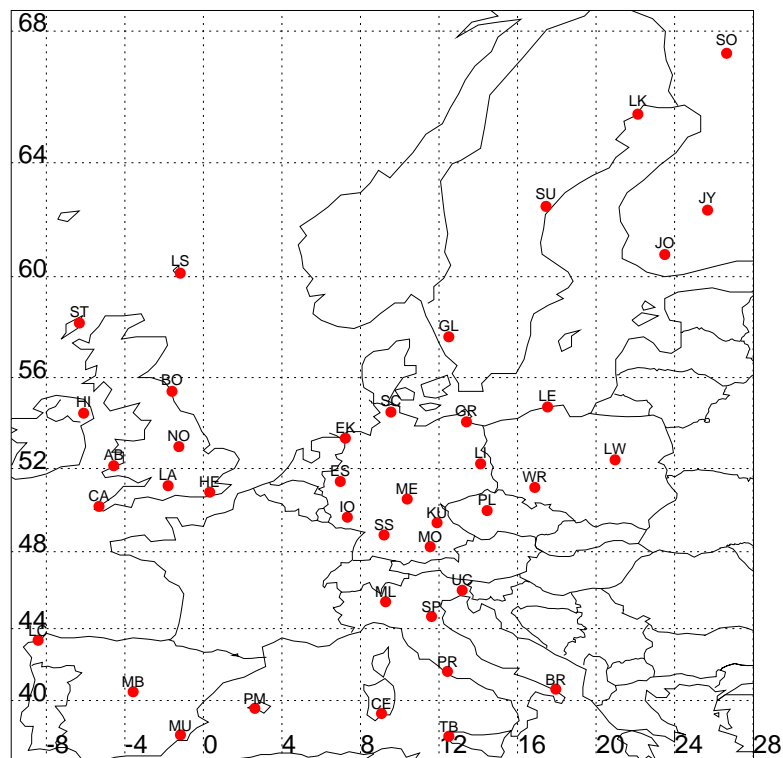
- Roy, B., Halverson, J. B., and Wang, J.: The influence of radiosonde “age” on TRMM field campaign soundings humidity correction, *J. Atmos. Oceanic Technol.*, 21, 470–480, 2004. [1532](#)
- Saunders, R. W., Hewison, T. J., Stringer, S. J., and Atkinson, N. C.: The Radiometric Characterization of AMSU-B, *IEEE T. Microw. Theory*, 43, 760–771, 1995. [1533](#)
- Seidel, D. J., Angell, J. K., Christy, J., Free, M., Klein, S. A., Lanzante, J. R., Mears, C., Parker, D., Shabel, M., Spencer, R., Sterin, A., Thorne, P., and Wentz, F.: Uncertainty in signals of large-scale climate variations in radiosonde and satellite upper-air temperature datasets, *J. Clim.*, 17, 2225–2240, 2004. [1530](#)
- Soden, B. J. and Lanzante, J. R.: An Assessment of Satellite and Radiosonde Climatologies of Upper-Tropospheric Water Vapor, *J. Climate.*, 9, 1235–1250, 1996. [1532](#), [1534](#)
- Soden, B. J., Turner, D. D., Lesht, B. M., and Miloshevich, L. M.: An analysis of satellite, radiosonde, and lidar observations of upper tropospheric water vapor from the Atmospheric Radiation Measurement Program, *J. Geophys. Res.*, 109, 1235–1250, 2004. [1532](#), [1534](#)
- Sohn, B. J., Chung, E.-S., Schmetz, J., and Smith, E. A.: Estimating upper-tropospheric water vapor from SSM/T-2 satellite measurements, *J. Appl. Meteorol.*, 42, 488–504, 2001. [1531](#)
- Sonntag, D.: Advancements in the field of hygrometry, *Meteorol. Z.*, 3, 51–66, 1994. [1533](#)
- SPARC: Assessment of Upper Tropospheric and Stratospheric Water Vapour, chap. Conclusions, World Climate Research Programme, WCRP-113, WMO/TD-No. 1043, 261–264, 2000. [1531](#)
- Spencer, R. W. and Braswell, W. D.: How Dry is the Tropical Free Troposphere?, Implications for Global Warming Theory, *Bull. Amer. Met. Soc.*, 78, 1097–1106, 1997. [1530](#)
- Spichtinger, P., Gierens, K., Leiterer, U., and Dier, H.: Ice supersaturated regions over the station Lindenberg, Germany, *Meteorol. Z.*, 12, 143–156, 2003. [1530](#)
- Turner, D. D., Lesht, B. M., Clough, S. A., Liljegren, J. C., Revercomb, H. E., and Tobin, D. C.: Dry bias and variability in Vaisala RS80-H radiosondes: The ARM Experience, *J. Atmos. Oceanic Technol.*, 20, 117–132, 2003. [1532](#), [1541](#)
- Wang, J., Cole, H. L., Carlson, D. J., Miller, E. R., Beierle, K., Paukkunen, A., and Laine, T. K.: Corrections of humidity measurement errors from the Vaisala RS80 radiosonde application to TOGA COARE data, *J. Atmos. Oceanic Technol.*, 19, 981–1002, 2002. [1532](#)

1544

**Table 1.** Information of the selected radiosonde stations.

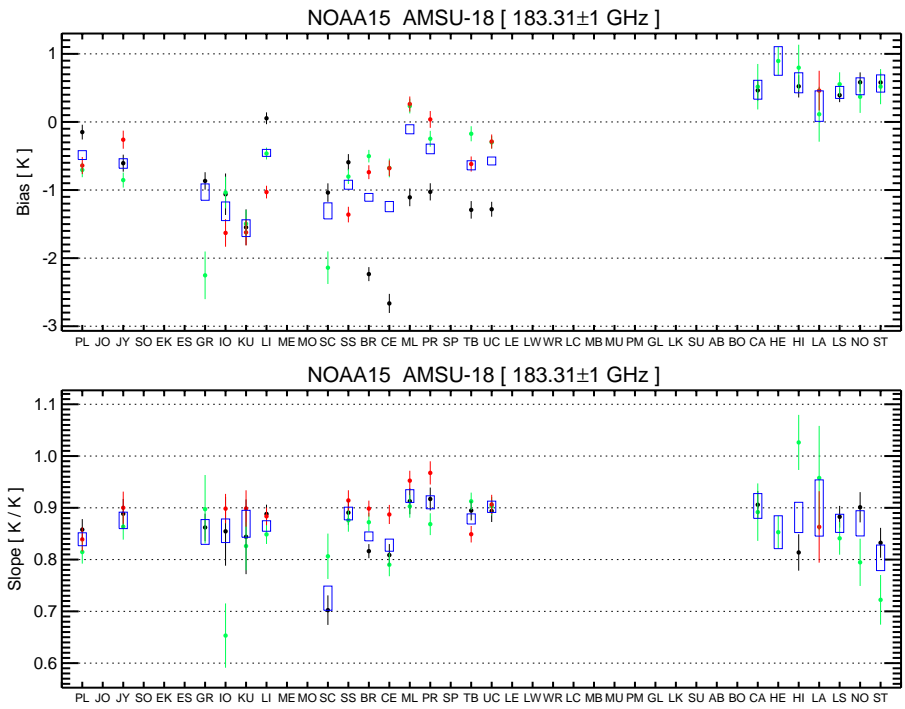
No.	Stn.	Lon	Lat	RS Type	Location	Country
1.	PL	14.45	50.02	RS90	Praha-Libus	Czech Rep.
2.	JO	23.50	60.82	RS80	Jokioinen	Finland
3.	JY	25.68	62.40	RS90	Jyvaskyla	Finland
4.	SO	26.65	67.37	RS90	Sodankyla	Finland
5.	EK	7.23	53.38	RS80	Emden-Koenigsploder	Germany
6.	ES	6.97	51.40	RS80/AU	Essen	Germany
7.	GR	13.40	54.10	RS80	Greifswald	Germany
8.	IO	7.33	49.70	RS80	Idar-Oberstein	Germany
9.	KU	11.90	49.43	RS80	Kuemmersruck	Germany
10.	LI	14.12	52.22	RS80	Lindenberg	Germany
11.	ME	10.38	50.57	RS80	Meiningen	Germany
12.	MO	11.55	48.25	RS80	Muenchen-Oberschleissheim	Germany
13.	SC	9.55	54.53	RS80	Schleswig	Germany
14.	SS	9.20	48.83	RS80/AU	Stuttgart-Schnarrenberg	Germany
15.	BR	17.95	40.65	RS90	Brindisi	Italy
16.	CE	9.07	39.25	RS90	Cagliari-Elmas	Italy
17.	ML	9.28	45.43	RS90	Milano-Linate	Italy
18.	PR	12.43	41.65	RS80	Pratica-di-Mare	Italy
19.	SP	11.62	44.65	RS80/AU	S. Pietro Capofiume	Italy
20.	TB	12.50	37.92	RS90	trapani-birgi	Italy
21.	UC	13.18	46.03	RS90	Udine-Campofornido	Italy
22.	LE	17.53	54.75	RS90	Leba	Poland
23.	LW	20.97	52.40	RS90	Legionowo	Poland
24.	WR	16.88	51.12	RS90	Wroclaw	Poland
25.	LC	-8.42	43.37	RS90	La-Coruna	Spain
26.	MB	-3.58	40.50	RS80/AU	Madrid-Barajas	Spain
27.	MU	-1.17	38.00	RS80	Murcia	Spain
28.	PM	2.62	39.55	RS80/AU	Palma-de-Mallorca	Spain
29.	GL	12.50	57.67	RS90	Goteborg-Landvetter	Sweden
30.	LK	22.13	65.55	RS90	Lulea-Kallax	Sweden
31.	SU	17.45	62.53	RS90	Sundvall-Harnlsand	Sweden
32.	AB	-4.57	52.13	RS80	Aberporth	UK
33.	BO	-1.60	55.42	RS80	Boulmer	UK
34.	CA	-5.32	50.22	RS80	Camborne	UK
35.	HE	0.32	50.90	RS80/AU	Herstmonceux-west-end	UK
36.	HI	-6.10	54.48	RS80	Hillsborough-MetOffice	UK
37.	LA	-1.80	51.20	RS80	Larkhill	UK
38.	LS	-1.18	60.13	RS80	Lerwick	UK
39.	NO	-1.25	53.00	RS80	Nottingham	UK
40.	ST	-6.32	58.22	RS80	Stornoway-Airport	UK

1545



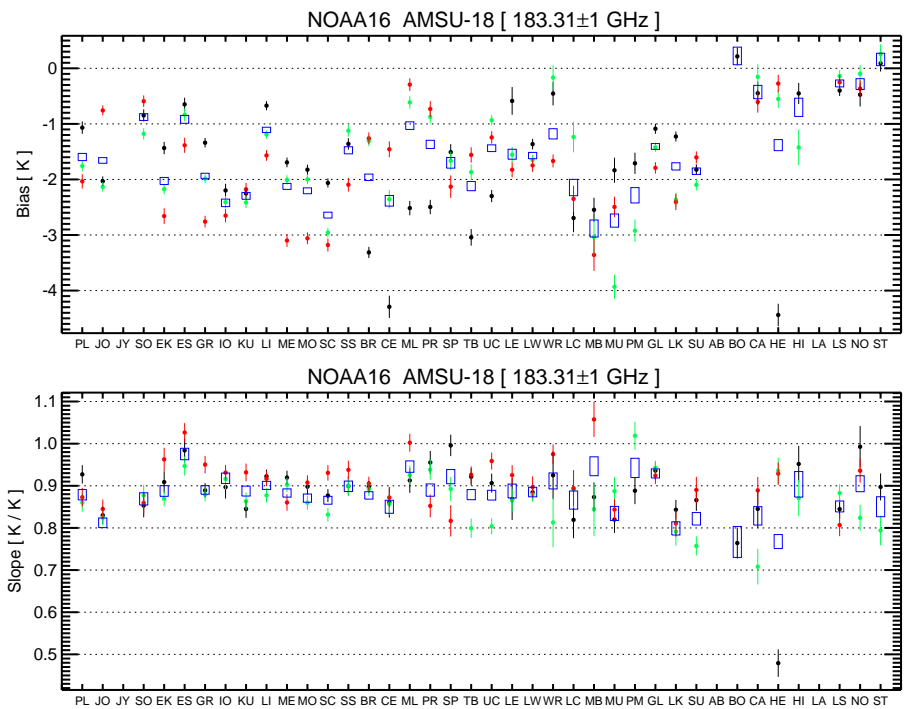
**Fig. 1.** The geographical locations of the radiosonde stations used in this study. These stations launch at least 10 launches per month which reach up to 100 hPa.

1546



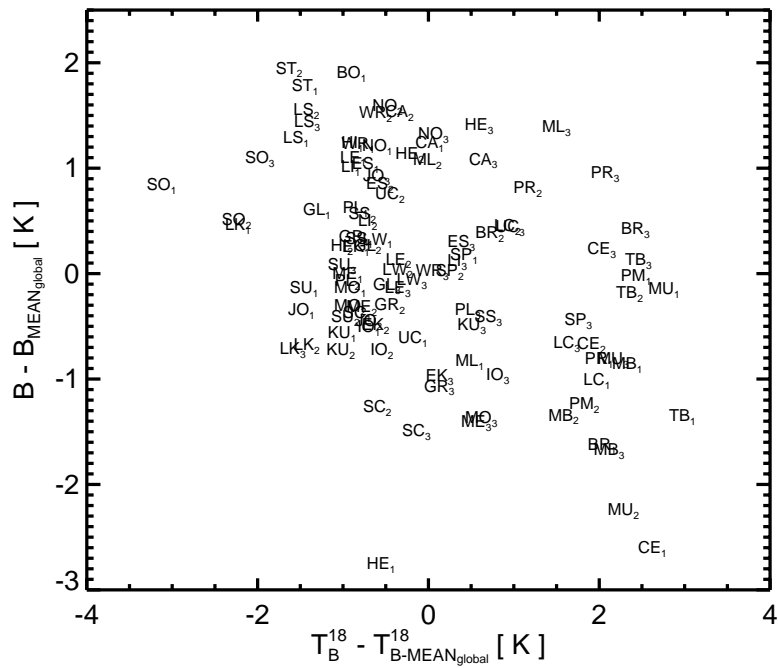
**Fig. 2.** Bias (upper panel), slope (lower panel) and their uncertainties of all the stations for channel 18. The satellite is NOAA-15. The values are shown for different years: 2001 (black), 2002 (green), and 2003 (red). Blue rectangles represent the quantity plus or minus the uncertainty for the whole time period (2001–2003).

1547



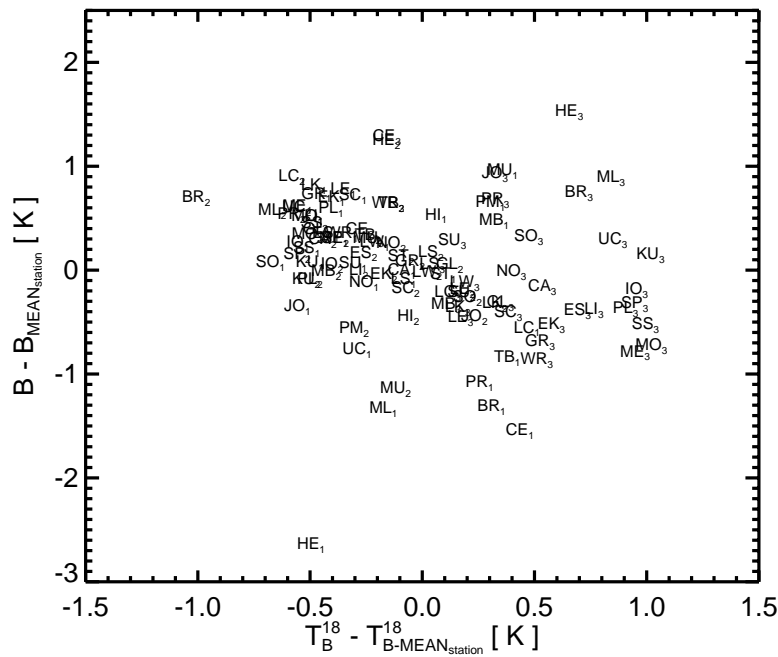
**Fig. 3.** Same as Fig. 2, but the satellite is NOAA-16.

1548



**Fig. 4.** Anomaly of bias versus anomaly of channel 18 brightness temperature for NOAA-16. The anomalies were calculated from the global mean, the mean brightness temperature of channel 18 of all the stations for the whole time period. Station short names are used for plotting symbols. The subscripts 1–3 represents the years 2001–2003.

1549



**Fig. 5.** Anomaly of bias versus anomaly of channel 18 brightness temperature for NOAA-16. The anomalies were calculated from the stations means, the mean brightness temperature of channel 18 of each station station for the whole time period. Station short names are used for plotting symbols. The subscripts 1–3 represents the years 2001–2003.

1550